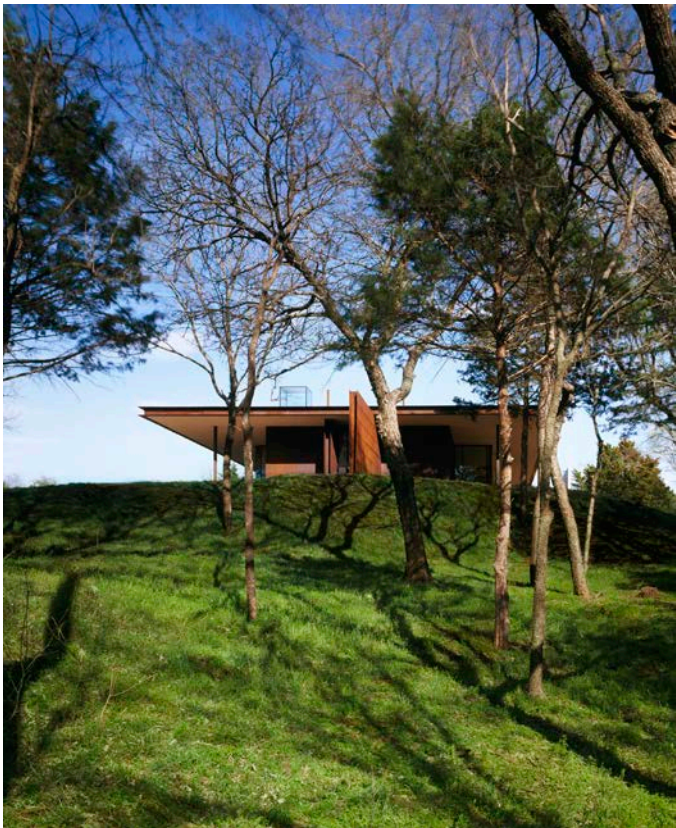




West elevation detail with thrusting steel wall



West elevation

Client: With held per client's request
Completion: September 2004
Scope: 4,308 SF (including garage)
Cost: Not for publication
Awards: AIA, Central States Region Honor Award; Chicago Athenaeum, American Architecture Award; Chicago Athenaeum, International Architecture Award; Residential Architect, Grand Award

Architectural Concept:

- Create "formless" architecture that arrives on the site as if a rectangular cut was made in the earth and it pushed up from below. The red granite gravel underroof edge and a rust colored roof support the concept. The rusted steel roof vents suggest natural grass growing through from the earth below.
- The horizontal banded rusting steel reveals the earth strata and maintains the red color of the soil.
- The linear plan separates and puts in sequence public and private spaces with narrow glass connector spaces stitching it together.
- The spaces are created to provide unique personal moments in time. These experiences include the view of a unique landscape feature from the bathtub or watching the wildlife from an exposed glass shower or watching a (planned) sheet of water pour off the roof edge creating a 20'W x 8' tall waterfall that you can stand behind.
- The thin roof cantilevers 8' to create pedestrian protection and sun control for all seasons.
- A freestanding concrete wall with moveable, colored acrylic rods provides an ever-changing interactive arrival point at the front door. This, along with a 20'W x 9' tall yellow steel frame, extends and captures visual fragments beyond the glass. The indoors and outdoors blur.
- The goal is to blend the site, soil, place and form into an expression inspired by the unique conditions of this place and time.
- The existing art collection has been placed to compliment the scale and natural light. In reality, the dominant art is the natural landscape and weather conditions viewed through the glass. Upon arrival by car, the owner lifts the garage door to park and is greeted by (3) 6' x 6' photographs. Even the garage is an art gallery.
- The interior finishes include a stained concrete slab the color of the soil as if the site moves through the structure. Spatial warmth is created with surface and color. Black rugs organize the spaces and furniture acts as objects within the space. The rusty red is inspired by the exterior steel. A freestanding 400-gallon saltwater aquarium provides serene movement between the living room and dining room. In fact, we view the house as an aquarium with people swimming about. Above the kitchen counter is a glowing, lighted opening acting as art and a man-made reminder of the seasons. Glass acts as an invisible separation to the natural world beyond regardless of whether it is the shower, toilet, tub or kitchen. It is truly like living outdoors. The glass garden on the north provides an unexpected pocket-sized Zen garden fashioned from recycled glass. Another "moment" created to offer an opportunity for peace and tranquility.



West elevation



Northwest corner illustrating the topography, site orientation and the "floating" roof



South elevation at office



Southwest corner view into the master tub area and exercise room



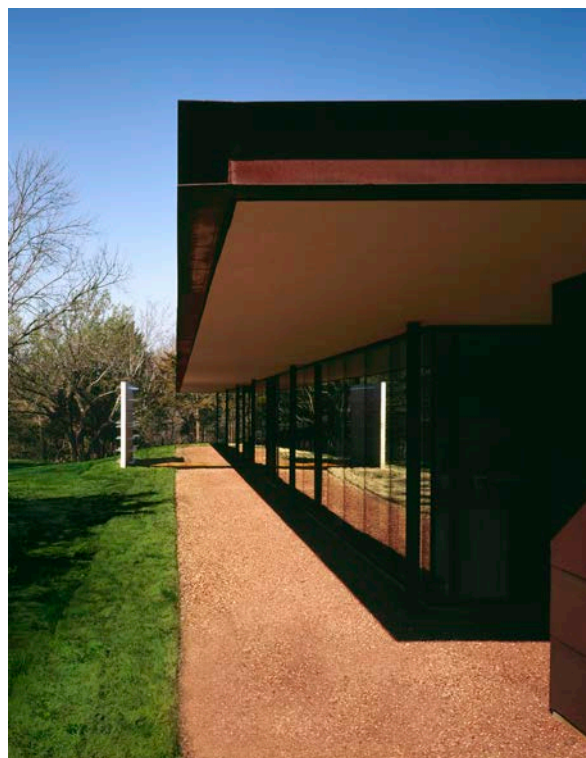
Southeast corner



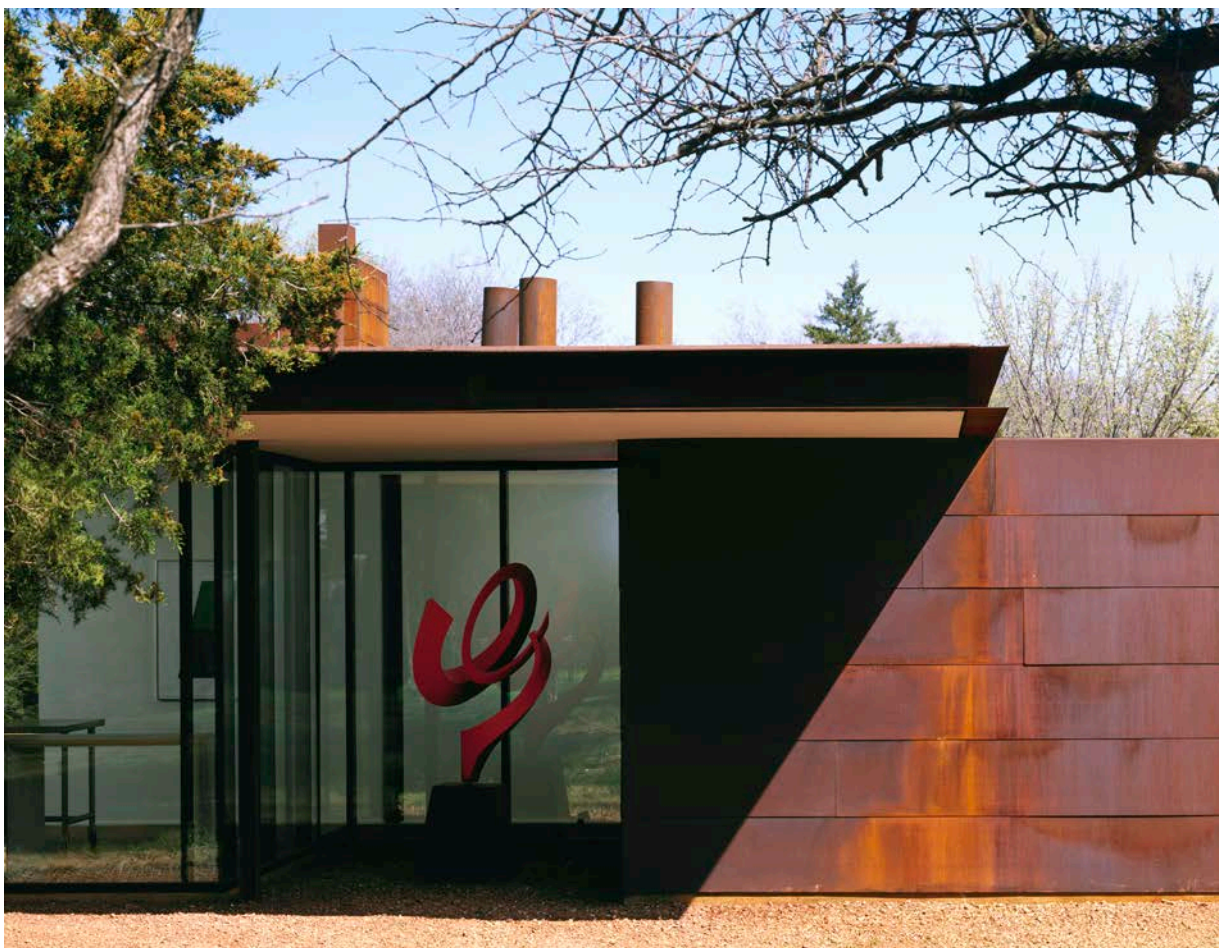
Southeast corner - public entry approach with rusting steel walls, gravel path and concrete entry wall



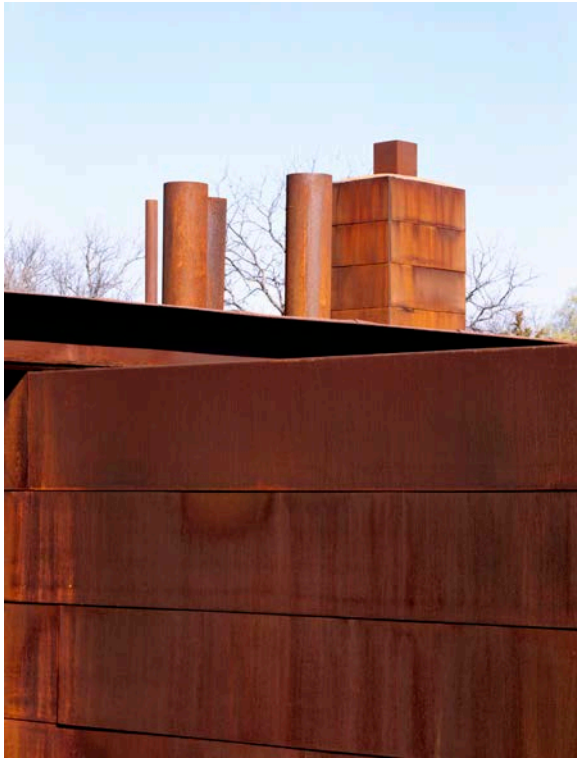
Garage/drive/path to main entry



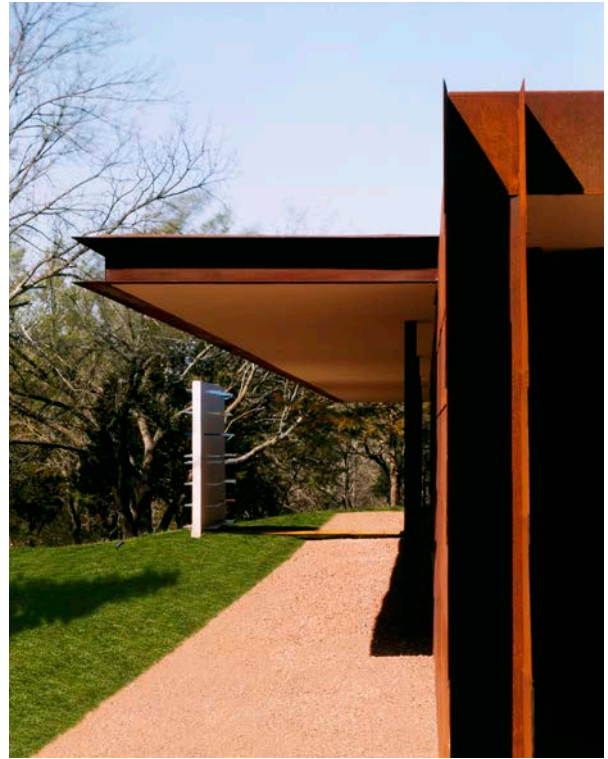
Southeast corner



South elevation at laundry room



Roof detail



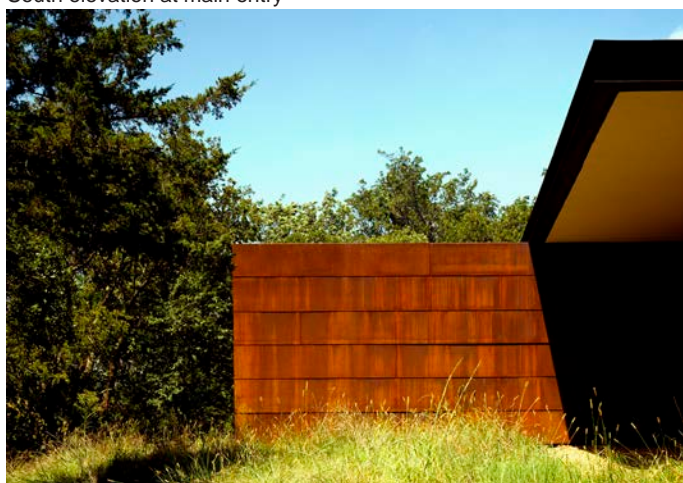
Southeast corner showing steel detail



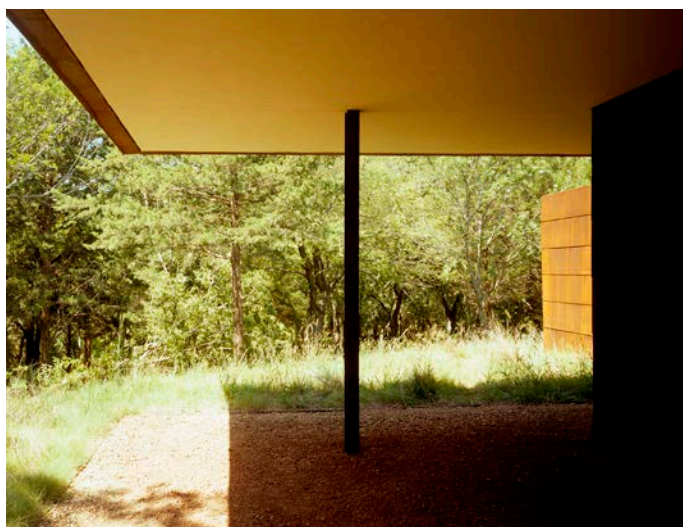
Southwest corner



South elevation at main entry



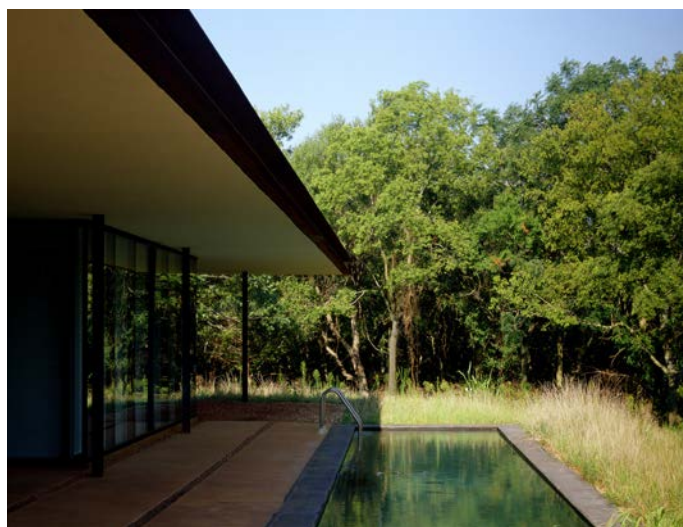
Southwest corner



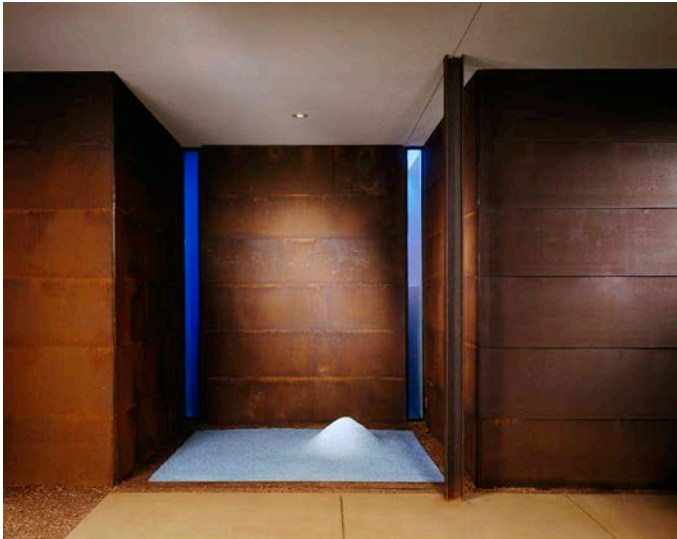
Southwest corner



North patio with a sculptural steel frame to enhance the view of the landscape



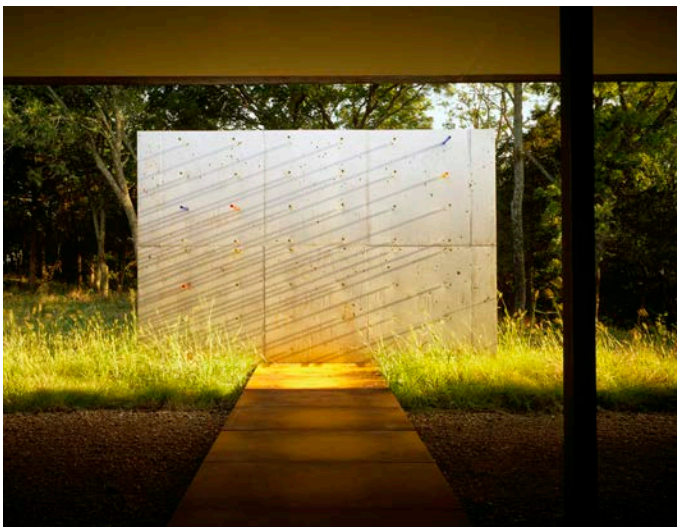
Northwest corner



Glass garden on north



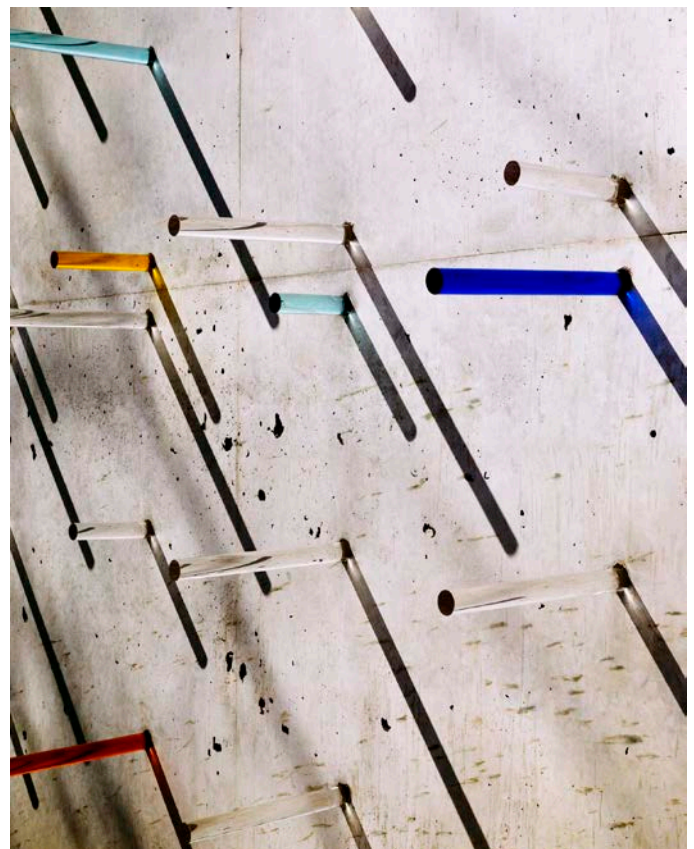
Main entry



View south at main entry



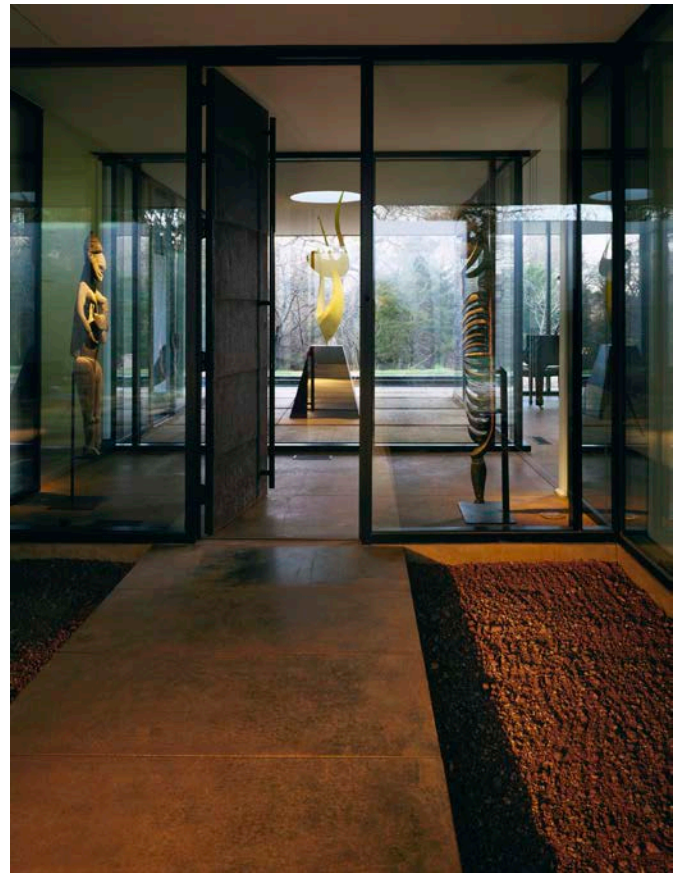
Main entry concrete wall



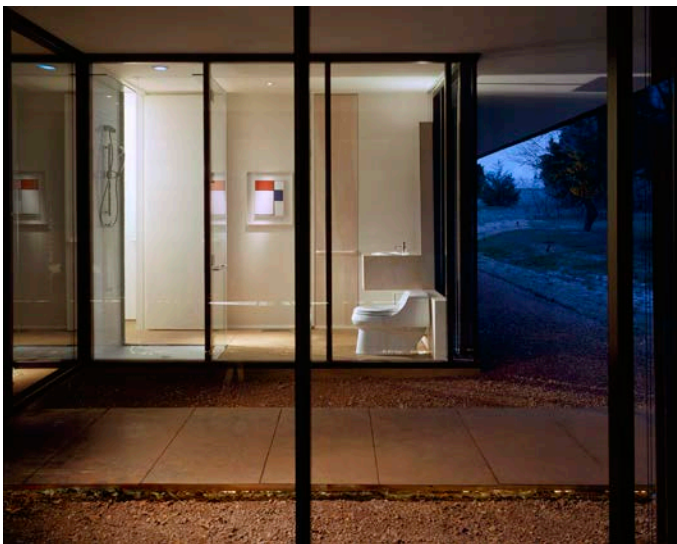
Main entry concrete wall detail with moveable acrylic rods



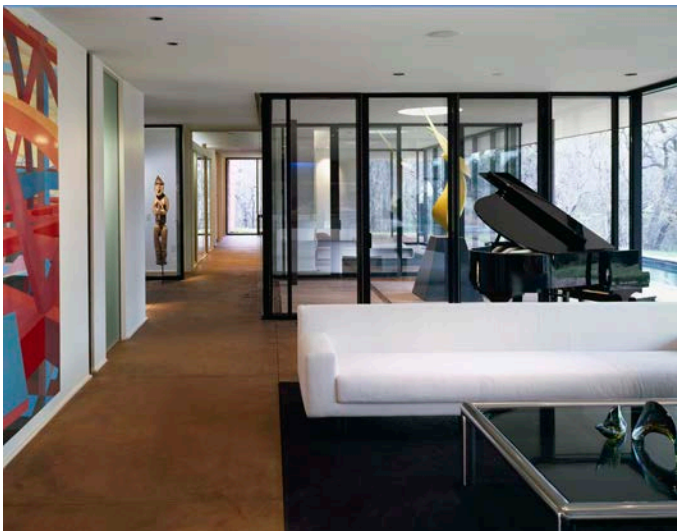
Main entry showing rusted steel bridge and vision to the landscape beyond



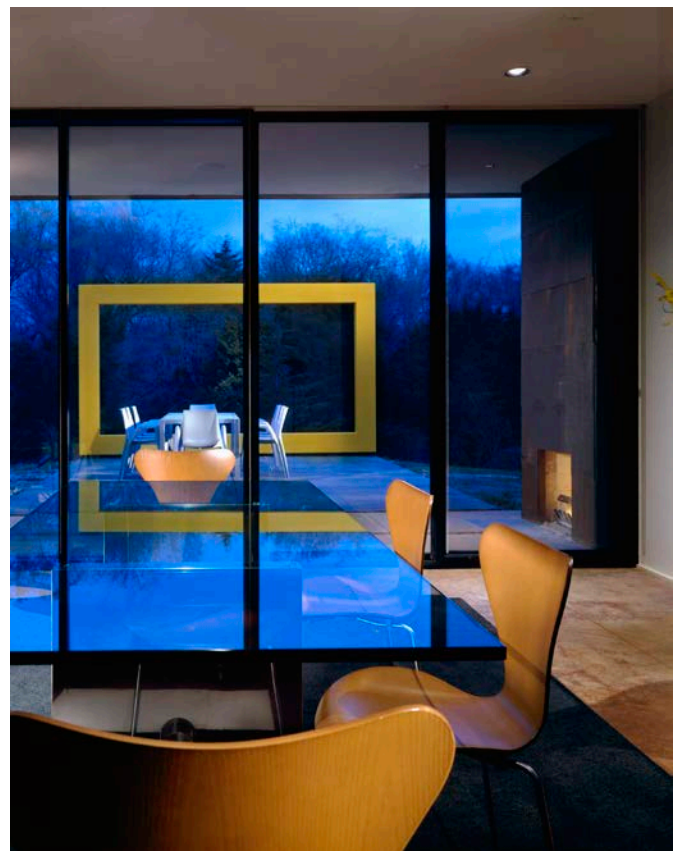
Main entry with rusted steel bridge



Guest bath



Living room looking west toward master bedroom



Dining looking north past outdoor fireplace toward yellow frame



Kitchen view looking east showing mahogany cabinets and light panel



Dining view to aquarium looking west



Guest bath looking south



View from exercise to master bedroom entry



View through master closet/corridor to master bath



Master bedroom entry



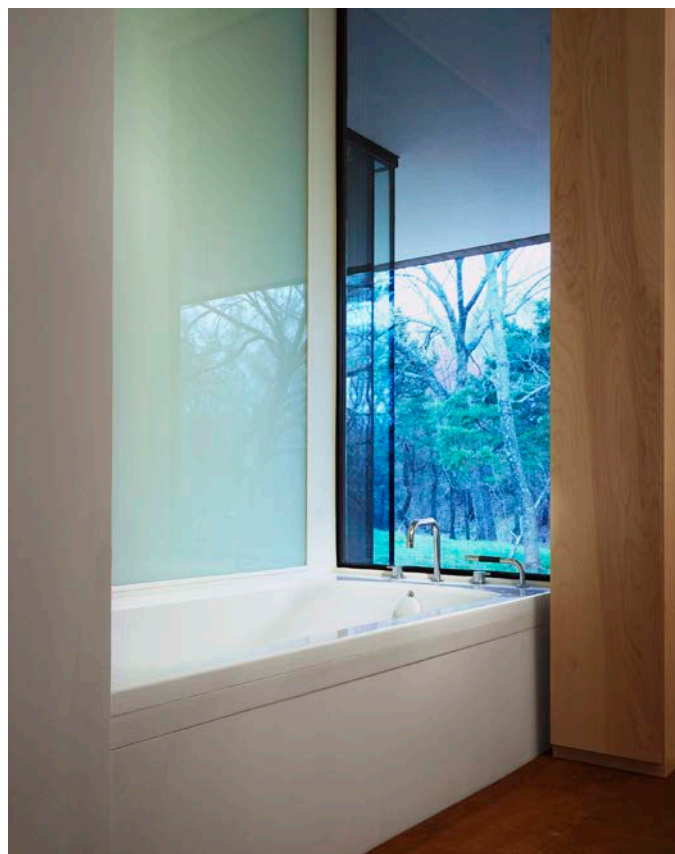
Master bedroom with sculptural television cabinet



Master closet/corridor looking east



Master lavatory looking west



Master tub with eye level glass



Master shower



Garage