

B I C E N T E N N I A L P A R K



A dusk view from the 2nd floor Hall of Mirrors looking east towards City Hall. The park was an original railroad yard until the 1930s. The architectural forms are inspired by the art deco details of the existing structures. There is both architectural power and romance witnessed in the space.



A daytime view from the second floor Hall of Mirrors looking east towards City Hall. The symmetrical, modern pavilions anchor the northwest and southwest corners of the park along the main entry drive. The "sweeping lines" concept is evident and visible in paving patterns, tree lines and sidewalk connections. The water feature can be wet or dry. When dry it becomes a stage for performances.



A view of the south pavilion showing the small pre-event courtyard space. Trees provide shade and a backdrop for performances under the pavilion. Entertainment greets patrons as they walk to the front door of the main building.

Client:	City of Oklahoma City
Completion:	In Process
Scope:	4 acre park
Cost:	\$4.5M construction budget
Project Team:	Landscape Architect: Planning Design Group James C. Crosby, RLA, ASLA Elliott + Associates Architects Rand Elliott, FAIA Michael Shuck - AssocAIA

Project Goals:

This project is part of Project 180, a redesign of downtown Oklahoma City, and includes the renovation of the great lawn at City Hall and Bicentennial Park located in front of the Civic Center Music Hall. Working with Planning Design Group we redesigned the 4 acre park to include planters, granite benches, walks and water features. Our work focuses on the **sculptural elements** of the park and included two pavilions and two signs. The pavilions are two large triangular steel frames with stretched fabric canopies. The signs include digital message centers showing information for upcoming events at the Civic Center Music Hall.

Landscape Concept: Sweeping Lines

Imagine . . .

- Inspiration from this feature of the Civic Center...
- the **axis** and the bookend architecture
- **connections** . . .
- a grand **sweeping** gesture . . .
- the rolling prairie
- getting to experience the center of the **view** . . . being in the view . . .
- think **limestone** and thick . . .
- strolling on a **curving** garden walk . . .
- a pool to **reflect**, duplicate and connect City Hall with the Civic Center . . .
- a park with a 21st Century romance
- stage panels to create performance space on the **water** . . . create a water stage . . .

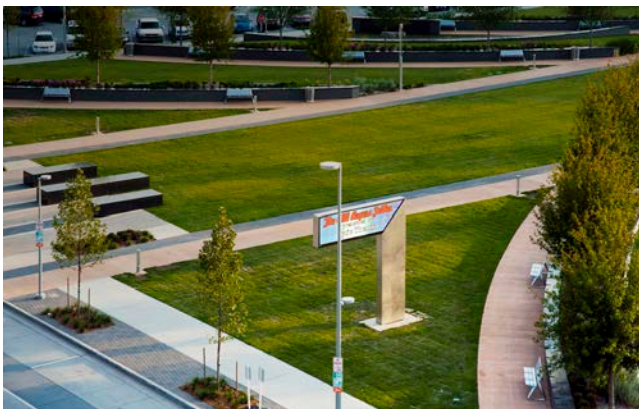
B I C E N T E N N I A L P A R K



A ground level view from the Civic Center front steps looking east towards City Hall. A curbsless drop off welcomes visitors and planters direct drivers. Seasonal color in the planters makes the arrival unique on every occasion.



The central water feature is positioned to allow events to use the Civic Center as a backdrop or the reverse where City Hall is the backdrop. The open lawn is reminiscent of the historic park and is intended to allow large public gatherings.



A pair of sculptural electronic signs assist passersby and advertise current productions and upcoming performances. The space between the two sculptural signs emphasizes the importance of the central axis connecting City Hall and the Civic Center.

Common Threads

- A park for all **seasons** . . . a celebration of each season with a changing landscape . . .
- Our **history** as inspiration . . .
- Think of the park as a **book** . . . telling of our past and our future. . .
- We will tell about the **evolution** of this place. . .
- To create a place where people **want** to be . . .
- Defining the **edges** of the park . . .
- Placing **public art** properly in the park . . . proper scale, proportion, beauty and context . . .
- The **sign** . . . how to make it better and more effective. . . the color of tree bark?
- We have embedded **fragments** of our city's DNA, our land run birth, Iron Wall (railroad), WPA/Art Deco, Arts Festival memories and Bicentennial Monument into concepts.
- There will be **programmed** events coordinated with the City . . .



The southwest pavilion courtyard provides a sculptural landmark and shade for performers. The masonry pavers illustrate the "sweeping line" concept. All of the park accessories were given careful consideration so that they support the concept. Benches, trash containers, seating walls, lighting, and the concrete monoliths are all orchestrated to be a part of the architectural character of the park.

B I C E N T E N N I A L P A R K



The sculptural pavilion makes a clear statement about 21st Century forms and the connection to the park's history. Old and new live together in harmony. We are a progressive city with a rich history.

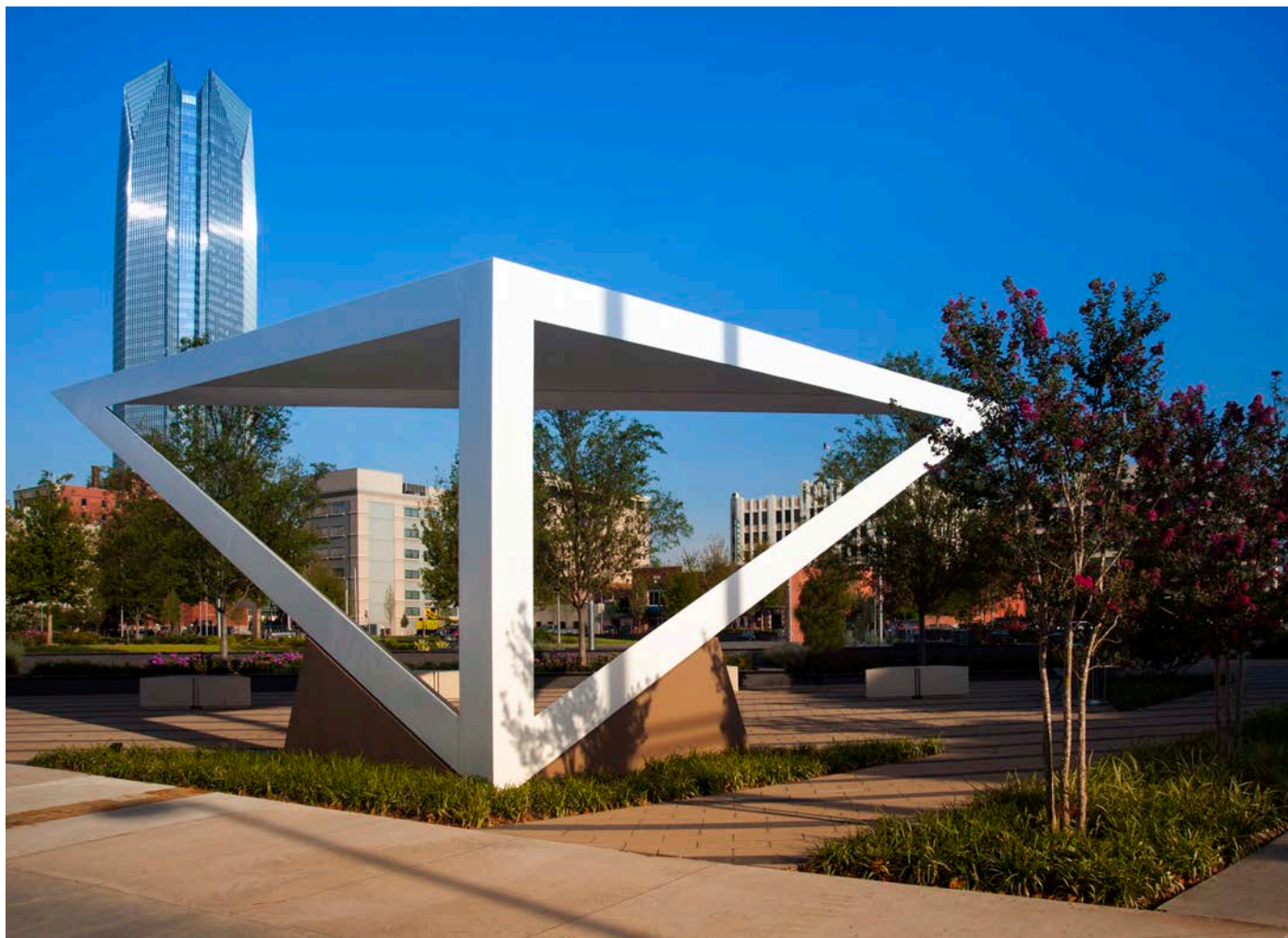


Humans are drawn to water, whether it is quiet or active. Historically water has proven to be an important asset for Oklahoma City.



The northwest pavilion courtyard is often the setting for small musical groups to greet patrons walking from the parking areas into the building. The "sweeping lines" concept is intended to encourage people to pass through the perimeter edges and into the central axis of the park.

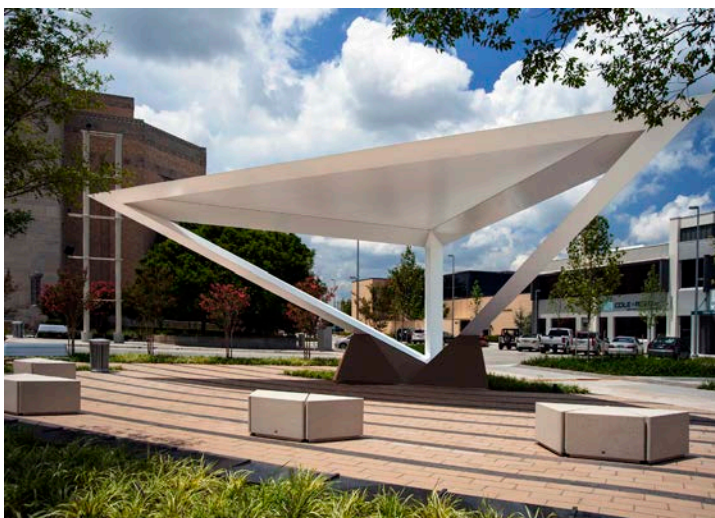
B I C E N T E N N I A L P A R K



A detail view of the pavilion structure.



A detail view of the pavilion structure. The concrete buttress allows the cantilever.



A detail view of the pavilion structure. The concrete buttress allows the cantilever.

B I C E N T E N N I A L P A R K



A detail view of the sharp edged, triangular shaped structural members of the pavilion framework.



A detail view of the pavilion structure. The concrete buttress allows the cantilever.



A detail view of the pavilion structural corner and the concrete buttress.



The dynamic sculptural form of the pavilion provides energy and contrast to the 1936 Civic Center building. Together they speak of then and now.