

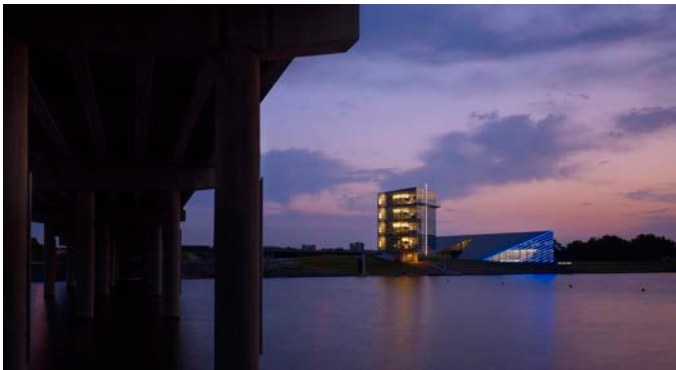
C H E S A P E A K E F I N I S H L I N E T O W E R



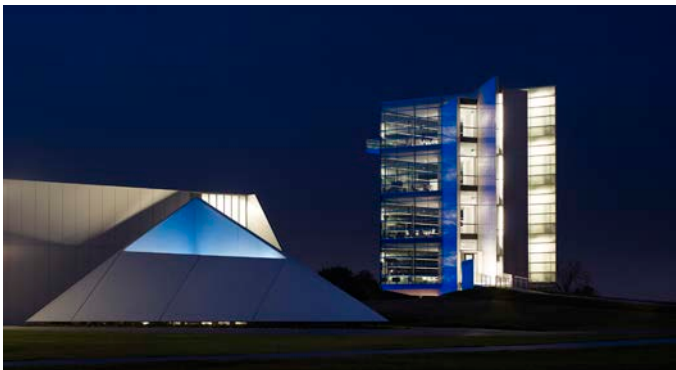
Dusk View looking northwest at Chesapeake Finish Line Tower and the Devon Boathouse



Night view looking north at Chesapeake Finish Line Tower and the Devon Boathouse



Dusk view looking northeast at Chesapeake Finish Line Tower and the Devon Boathouse



Night view looking southwest at the Chesapeake Finish Line Tower (on the right) and the Devon Boathouse (on the left)

Client: Oklahoma City Boathouse Foundation
Completion: July 2011
Scope: 7,112 s.f.
Cost: Confidential per client's request
Awards: Honor Award, AIA Oklahoma; Chicago Athenaeum, International and American Architecture Awards; AIA Central Oklahoma, Merit Award

Project Goals:

Chesapeake Finish Line Tower is a project of Chesapeake Energy, a major supporter of Oklahoma River projects, and the Oklahoma City Boathouse Foundation. The 7,112 s.f. tower is located on the Oklahoma River.

Architectural Concept:

- To create a dramatic / memorable signature symbol for the Boathouse District that ties the Boathouses, the park and the spirit of the sport together.
- To create a state-of-the-art Finish Line Tower that meets FISA International Standards.
- To make the Finish Line a recognizable place for celebration.
- Design considerations include:
 1. Finish-line "wire" becomes an architectural element
 2. Interior glass glare reduction for daytime use.
- Interior glass glare reduction for night racing, sloped glass and special lighting.
- Jury visibility to racing lanes.
- Cantilevered building space for spectators.
- Mirror wall pulls light into the space and makes it seem more transparent.
- Finish Line LED marker.

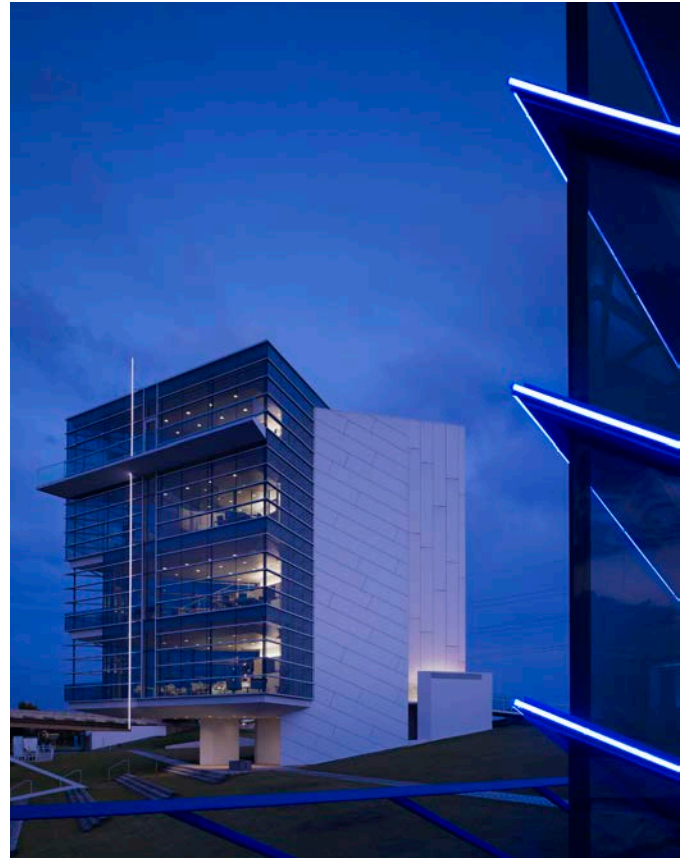


Night view looking southwest at the Chesapeake Finish Line Tower (on the right) and the Devon Boathouse (on the left)

C H E S A P E A K E F I N I S H L I N E T O W E R



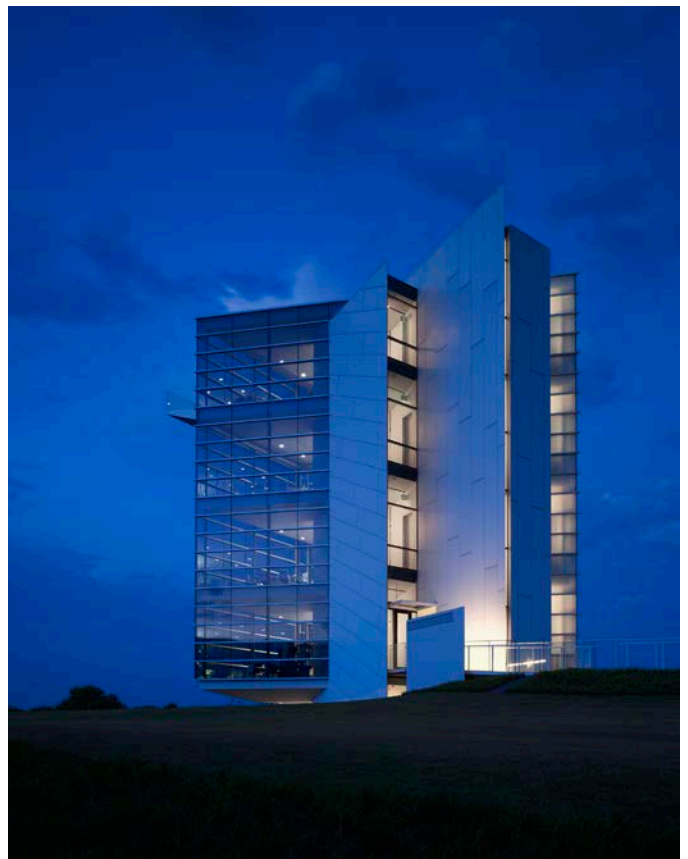
Night view of Chesapeake Finish Line Tower and the Devon Boathouse



Chesapeake Finish Line Tower looking west from the Devon Boathouse



Chesapeake Finish Line Tower looking west



Chesapeake Finish Line Tower looking west

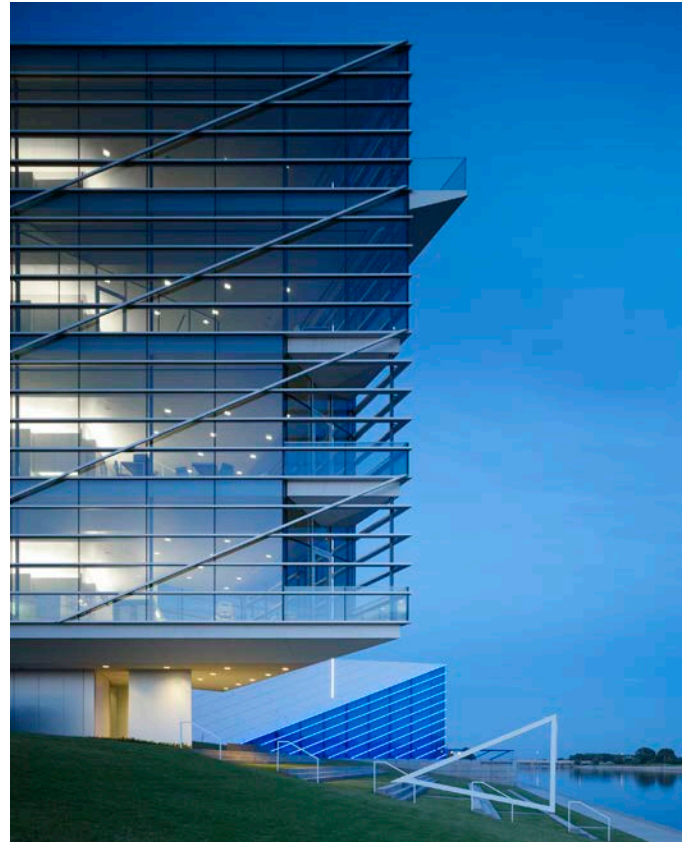


Chesapeake Finish Line Tower looking west

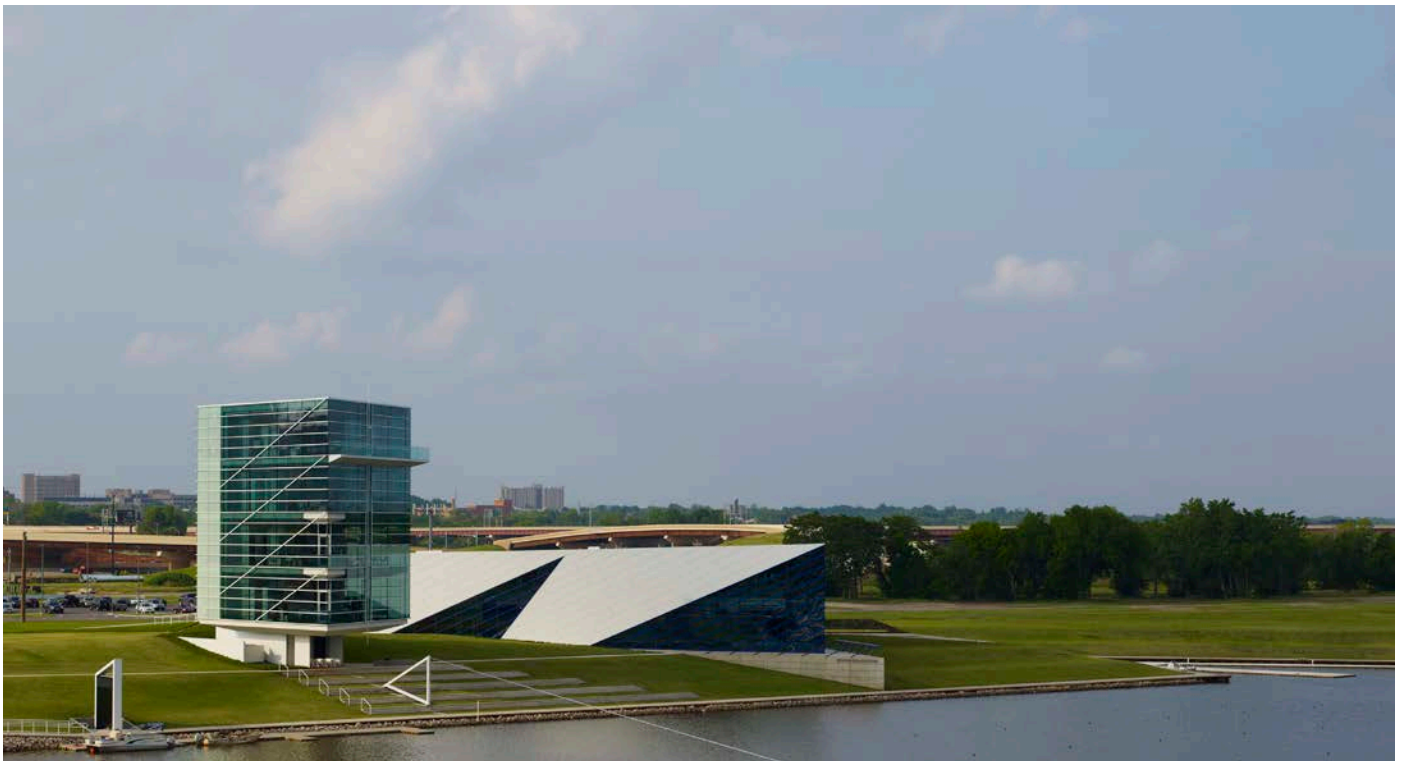
C H E S A P E A K E F I N I S H L I N E T O W E R



Night view looking north at south elevation



Partial West elevation with cable finish line structure



View looking north from Byers Avenue Bridge across the Oklahoma River

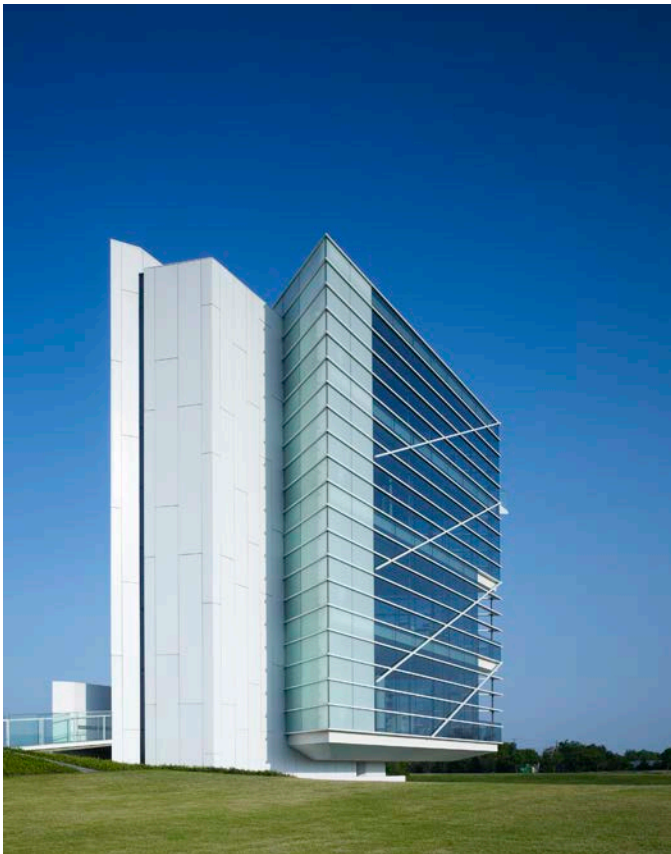
C H E S A P E A K E F I N I S H L I N E T O W E R



North elevation approach



North elevation approach



View looking southeast



View looking southeast



View looking southeast

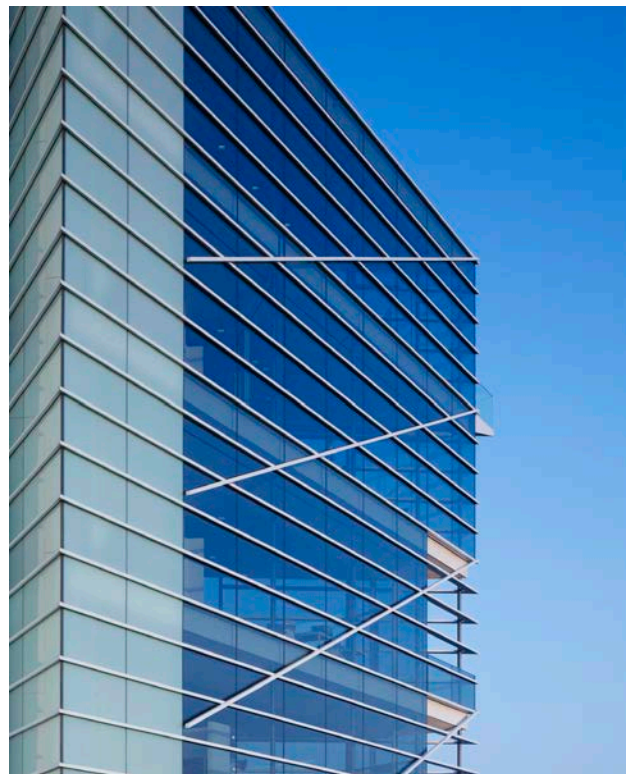
C H E S A P E A K E F I N I S H L I N E T O W E R



View looking southeast

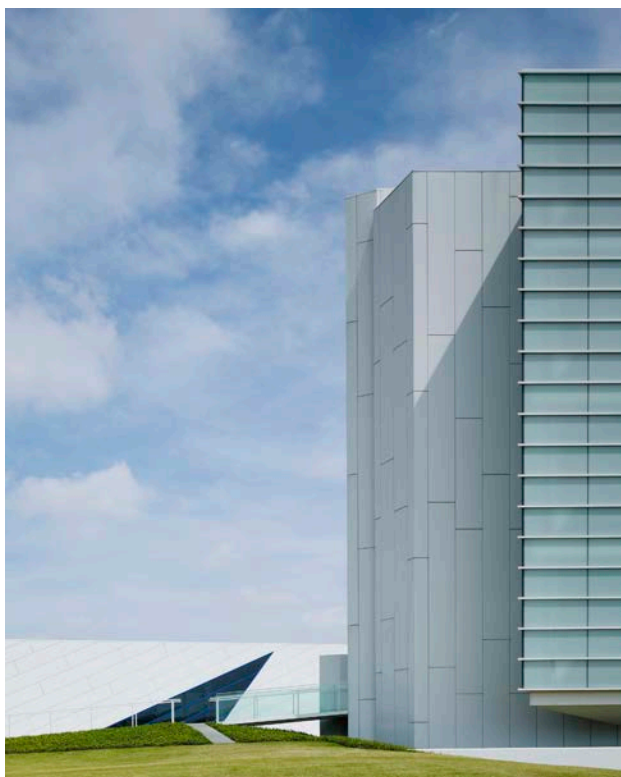


View looking southeast

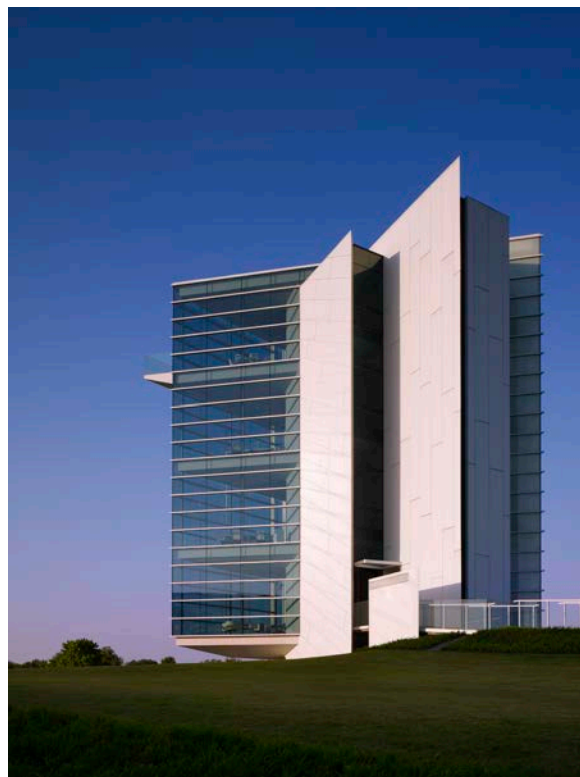


West elevation

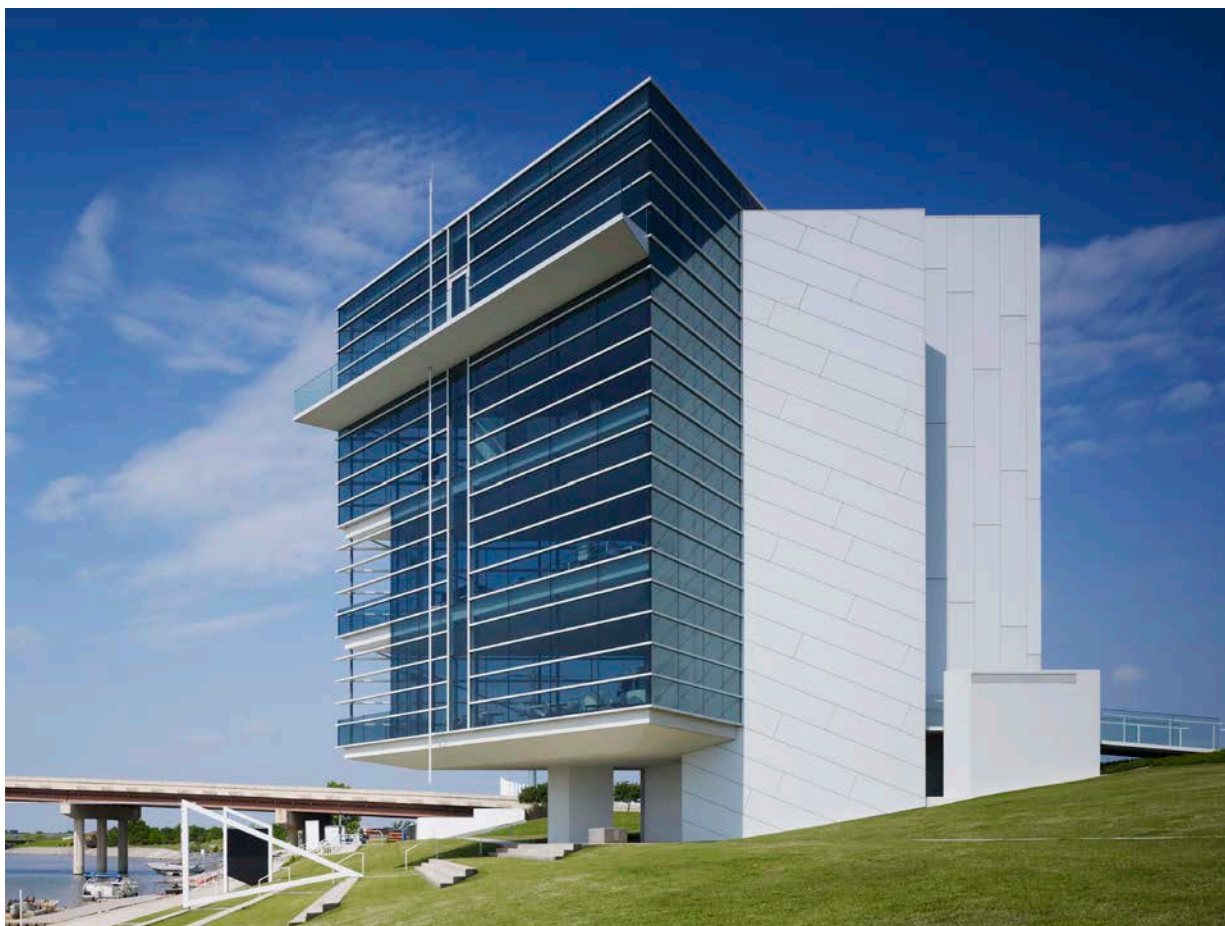
C H E S A P E A K E F I N I S H L I N E T O W E R



Northwest corner detail



View looking southwest



View looking west

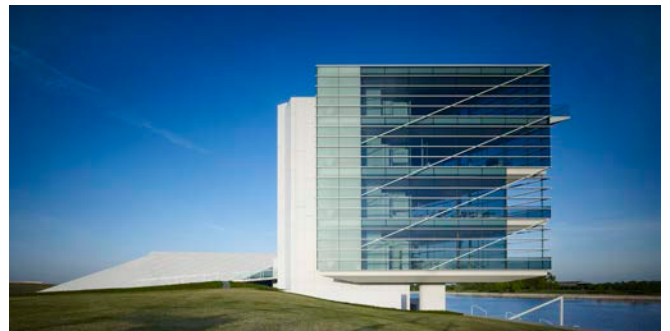
C H E S A P E A K E F I N I S H L I N E T O W E R



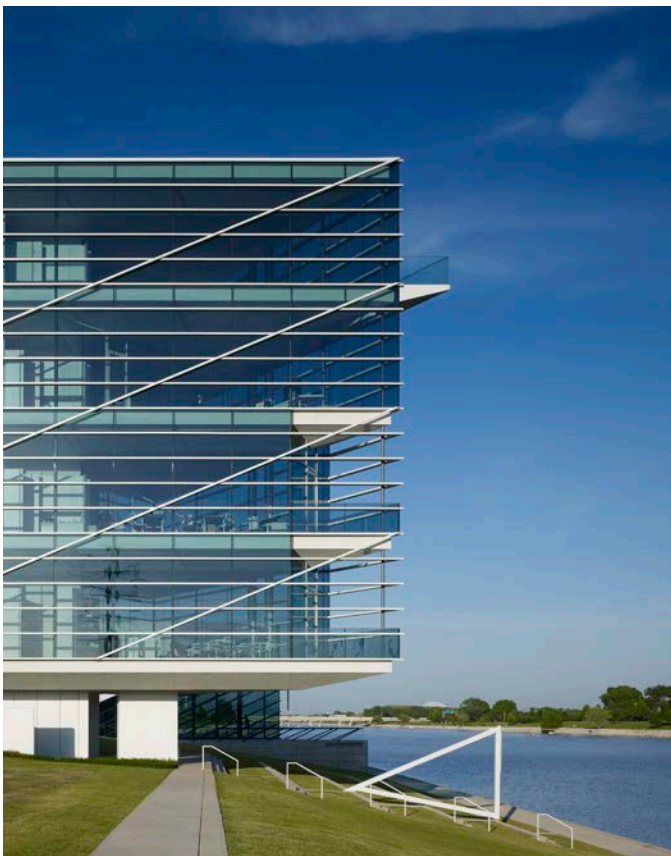
Southeast elevation showing balconies



East elevation detail



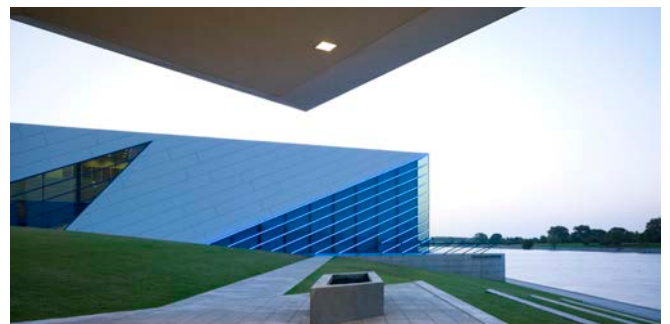
West elevation



Partial west elevation

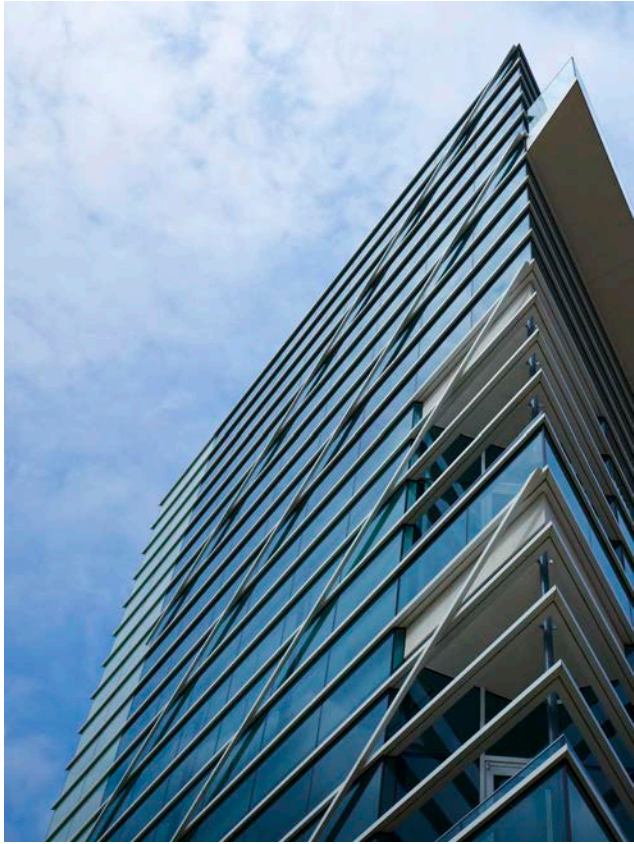


West elevation

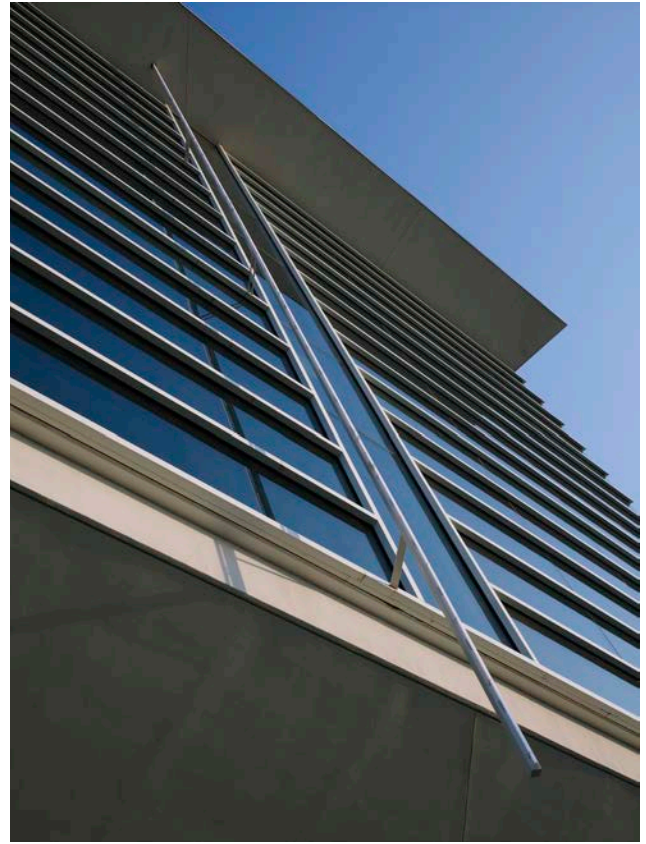


View looking east from under cantilevered edge with fire pit

C H E S A P E A K E F I N I S H L I N E T O W E R



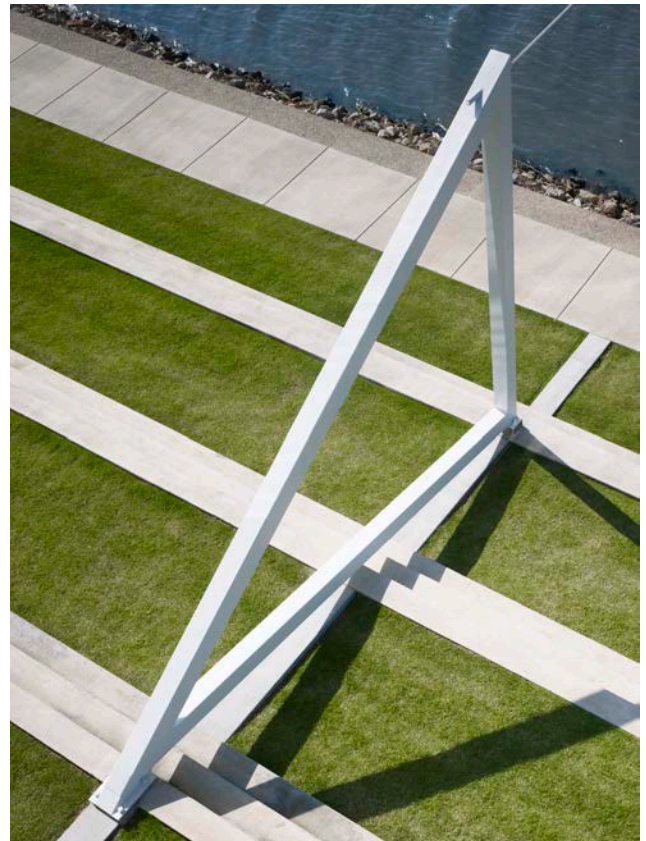
Southwest corner detail with balconies



Southeast elevation detail with LED "wire"



Southeast elevation detail and finish line cable structure



Finish line cable structure from balcony

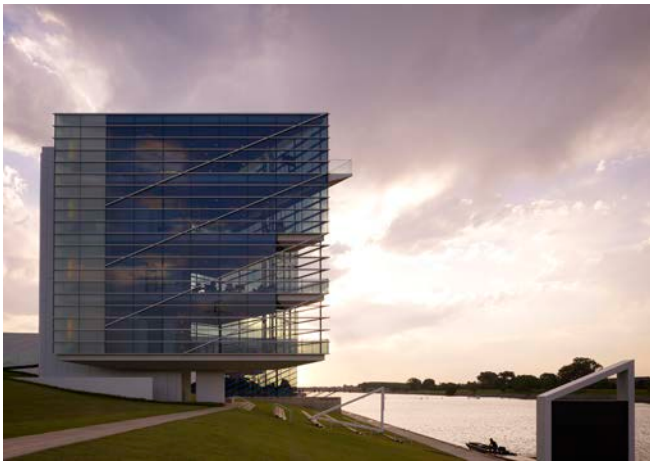
C H E S A P E A K E F I N I S H L I N E T O W E R



Finish line cable structure and step seats from balcony



West elevation at sunrise



West elevation at sunrise

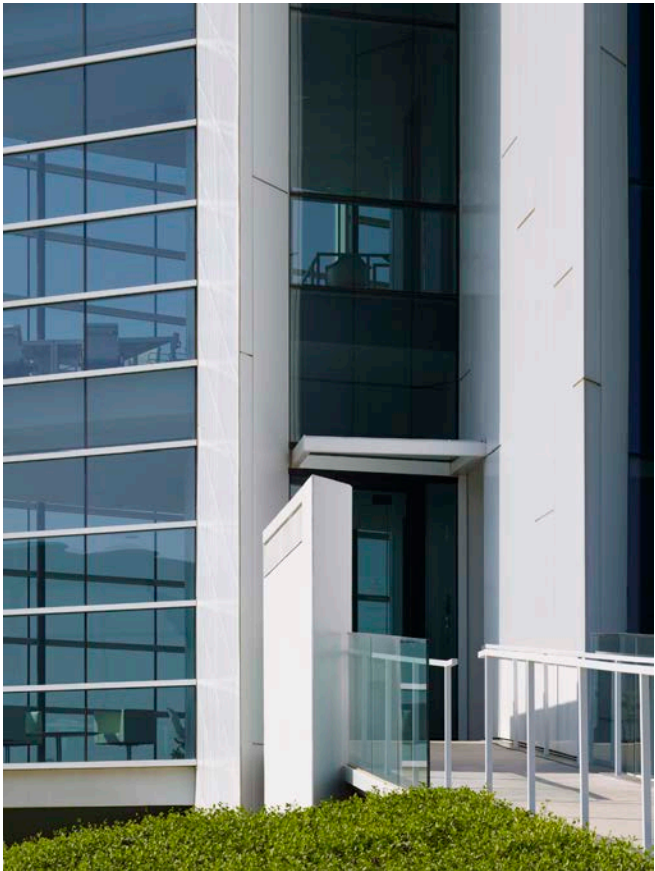


West elevation detail at sunrise

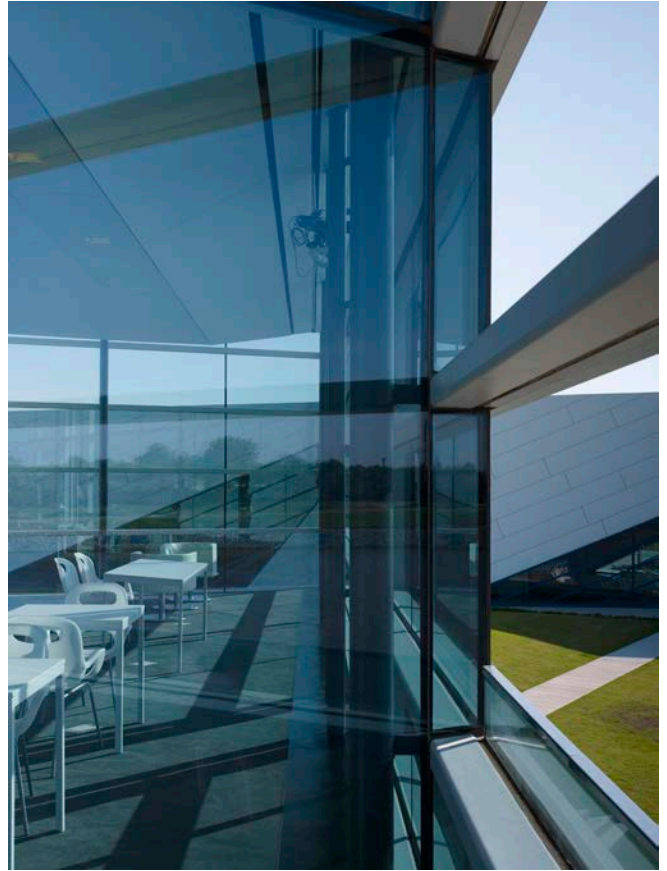


View looking northeast at sunrise across the Oklahoma River

C H E S A P E A K E F I N I S H L I N E T O W E R



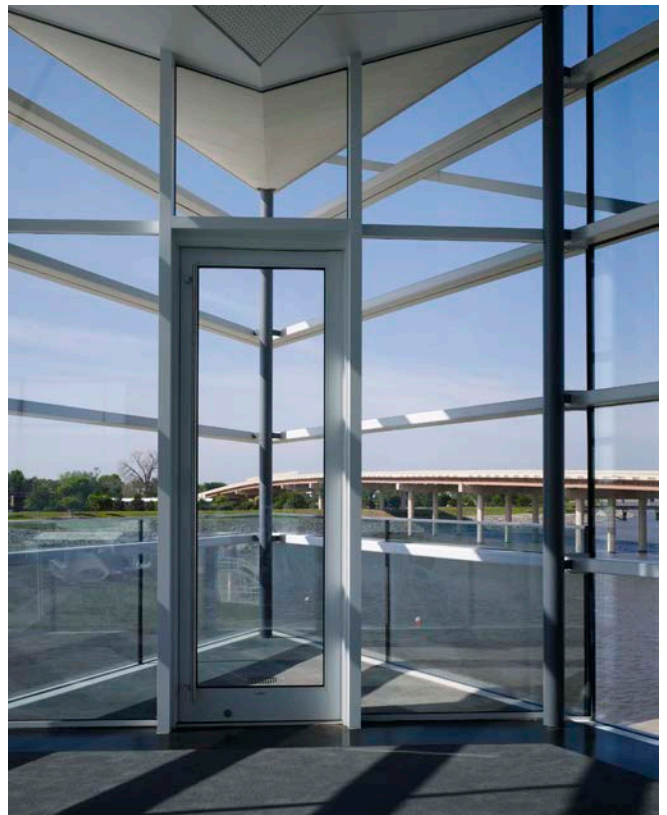
North entry with movie screen wall



Entry level balcony looking east

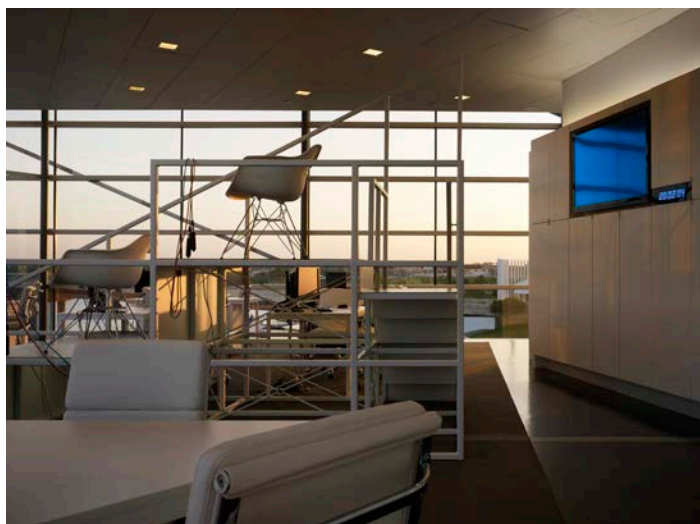


Entry level guest seating looking southeast



Entry level balcony looking southwest

C H E S A P E A K E F I N I S H L I N E T O W E R



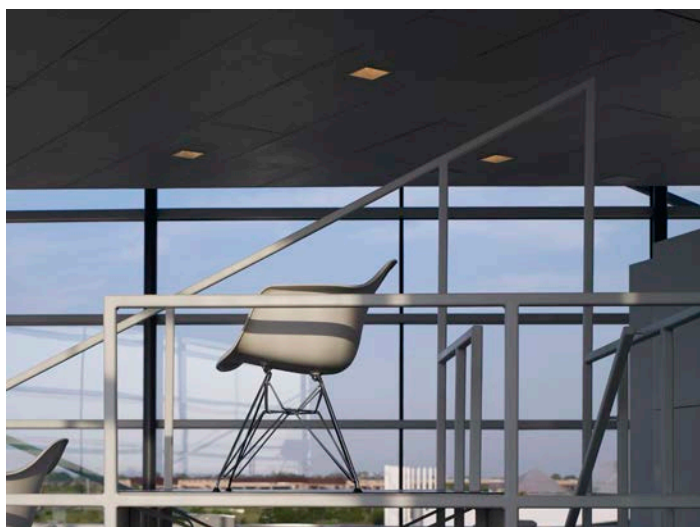
2nd level judges' platform area and racing support space



2nd floor level judges' platform detail looking south at finish line through vertical glass panel with alignment line on the glass



2nd level judges' platform looking east

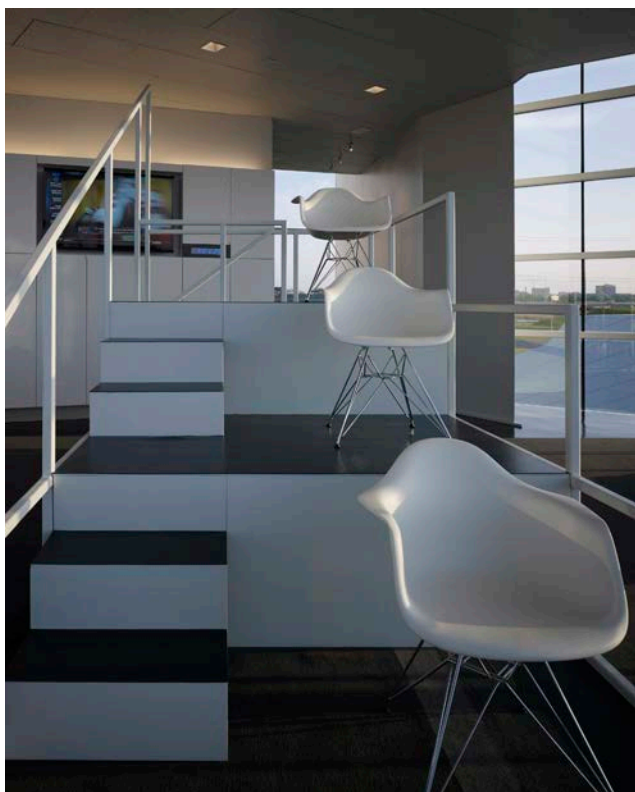


2nd floor level judges' platform detail

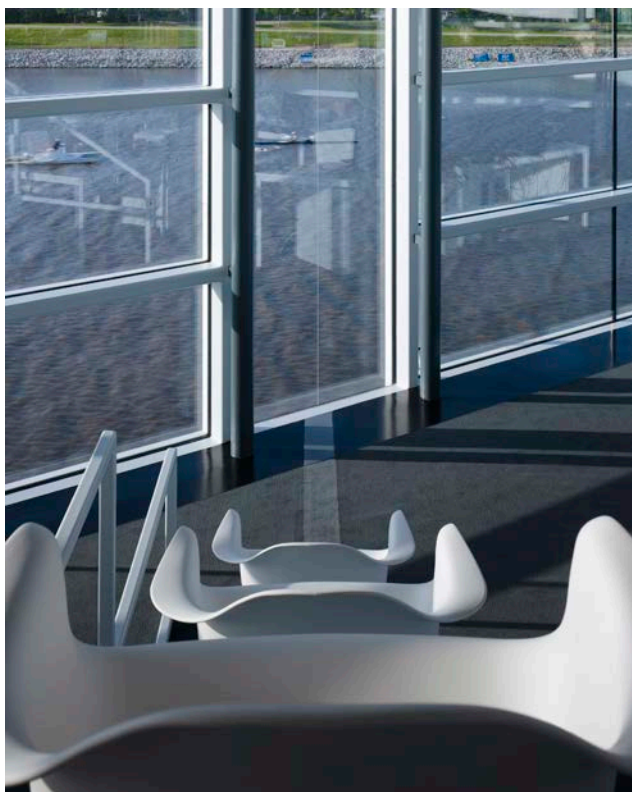


2nd floor level judges' platform detail looking south at finish line through vertical glass panel with alignment line on the glass

C H E S A P E A K E F I N I S H L I N E T O W E R



2nd floor level judges' platform detail looking north



2nd floor level judges' platform detail looking south in alignment with finish line



3rd level media studio looking south

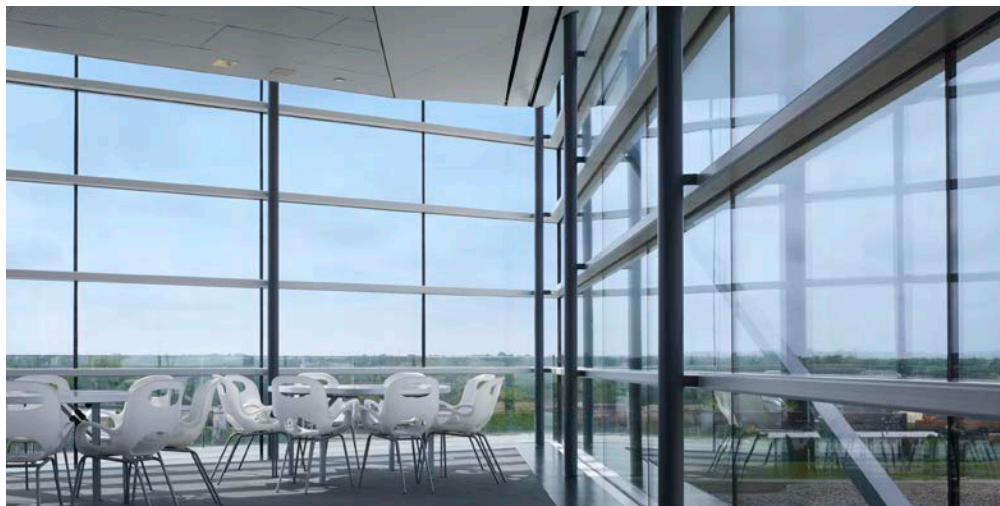


3rd level media conference room looking southwest

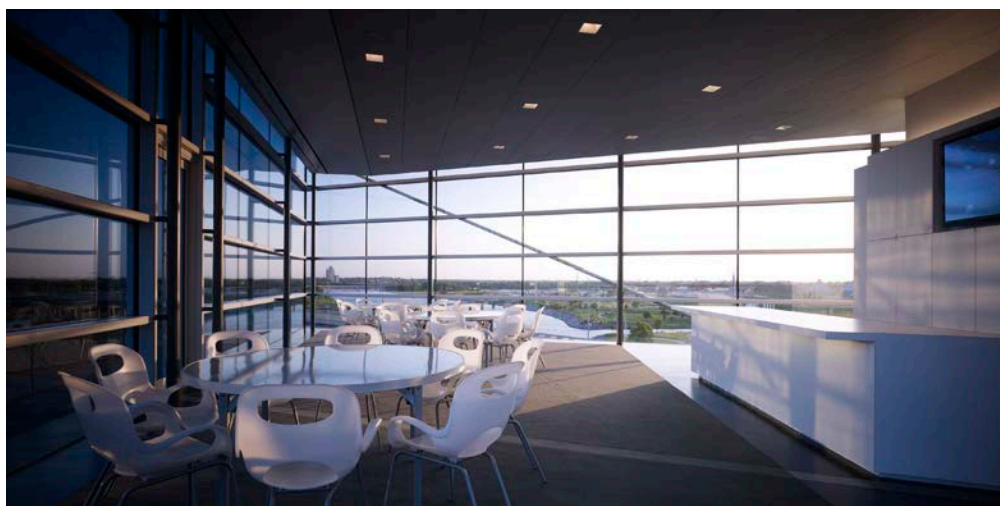


3rd level media conference room looking west

C H E S A P E A K E F I N I S H L I N E T O W E R



4th level event space looking south



4th level event space looking west

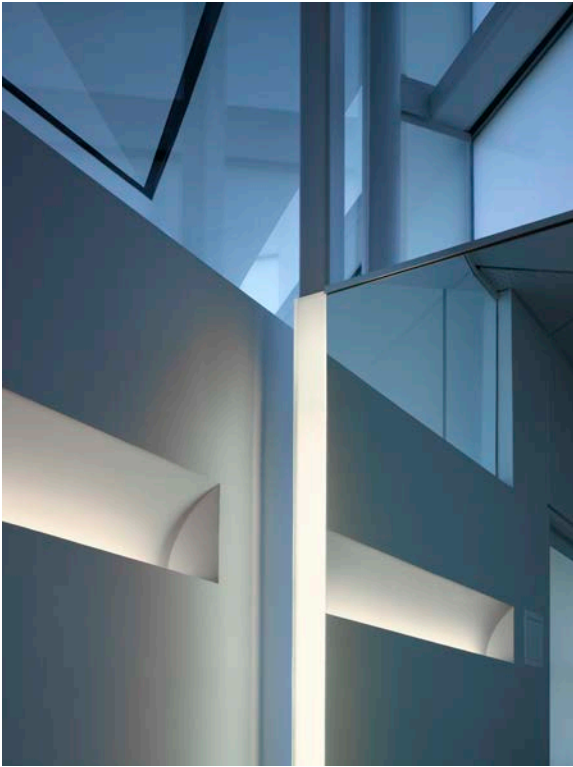


Typical women's toilet at northwest building corner with translucent white glass

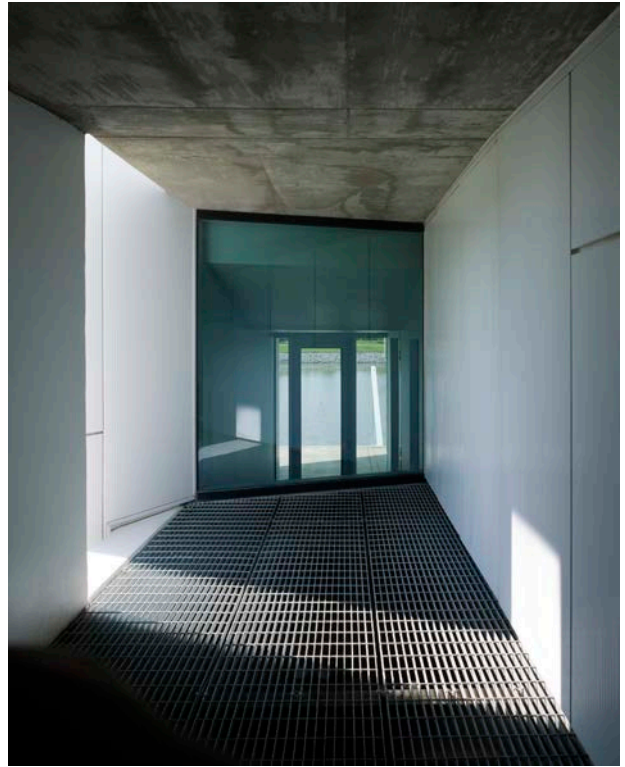


Women's toilet corner ceiling detail with translucent white glass

C H E S A P E A K E F I N I S H L I N E T O W E R



Men's toilet separation wall lighting detail



Ground level view of mechanical exhaust grille and elevator lobby access to the Oklahoma River.



Overhead view of stair lighting detail