

C H E S A P E A K E B O A T H O U S E



Southwest corner showing entry, deck, reflecting pool and steel pylons



View looking west along deck

Client: Oklahoma City Boathouse Foundation
Completion: January 2006
Scope: 14,578 s.f.
Cost: Not for Publication
Awards: AIA, Central States Region, Honor Award of Excellence; Chicago Athenaeum, International Architecture Award; AIA Oklahoma, Honor Award; Chicago Athenaeum, American Architecture Award

Once a divisive separation between north and south, the Oklahoma River is now positioned to be the future of Downtown. The Canadian River, remembered as “a ditch we moved,” is being reinvented. A \$56 million river renovation has been completed, and the newly-renamed Oklahoma River (formerly the North Canadian River) now winds its way through downtown. Through the vision of Aubrey McClendon, the Boathouse was born. The Oklahoma City Boathouse Foundation is a community foundation chartered to oversee the management and operation of the Chesapeake Boathouse, which was the first private construction project funded along the Oklahoma River. The essence of rowing is captured in the design of the Chesapeake Boathouse, which was to “make it light, needle thin and fast.” The unique design reflects the spirit of rowing in Oklahoma – it is a rowing shell on the prairie.

Program Functions:

- Provide a multi-purpose facility with the focus on training and rowing events; where possible, create spaces that support events and provide space for activities ranging from weddings to corporate retreats. This income further supports rowing activities.
- Provide a public lobby capable of supporting 100 guests.
- Provide a multi-purpose conference/event/board room. The room seats 56 around modular tables, 100 standing and 135 classroom style.
- Provide locker room space for men and women with lockers for 20 each.
- Provide storage for 124 boats ranging from single sculls to 8-person shells.
- Provide a boat repair space.
- Provide offices for the Executive Director, Events Coordinator and volunteer support.
- Provide a state-of-the-art training facility with specialized equipment for rowing. The training area will accommodate 36 people at one time.
- Special requirements include:
 1. Provide large doors for boat access and maneuvering.
 2. Create an outdoor apron for boat washing with maneuvering space adjacent to the river and dock area.
 3. Provide adjacent parking for boat trailers and maneuvering space.

C H E S A P E A K E B O A T H O U S E



Aerial



Aerial



Southwest corner looking north



South roof cantilever looking east

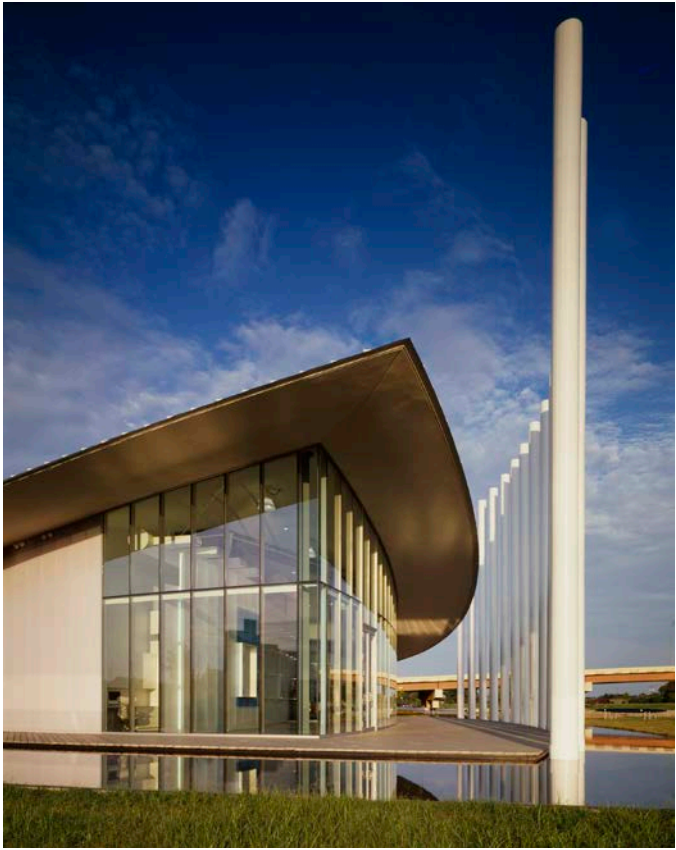


Northwest elevation looking southeast

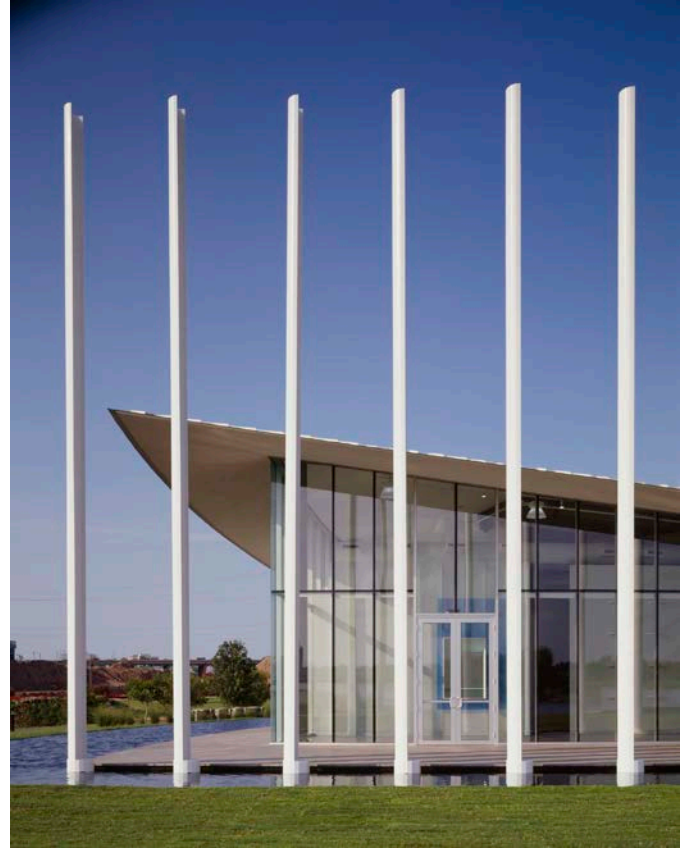


North elevation looking southeast

C H E S A P E A K E B O A T H O U S E



Southwest corner



Southwest corner



South elevation looking north

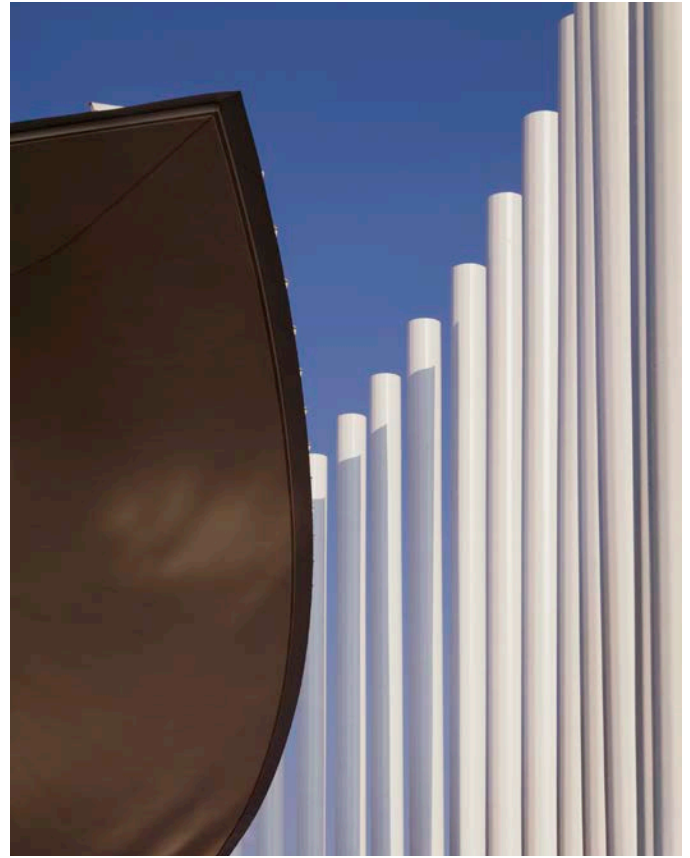


South elevation looking west

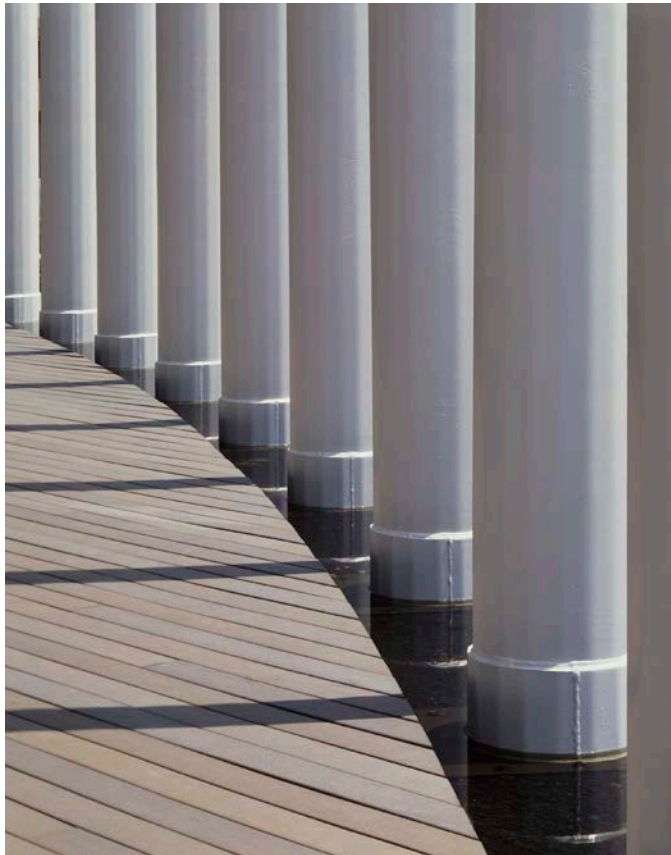
C H E S A P E A K E B O A T H O U S E



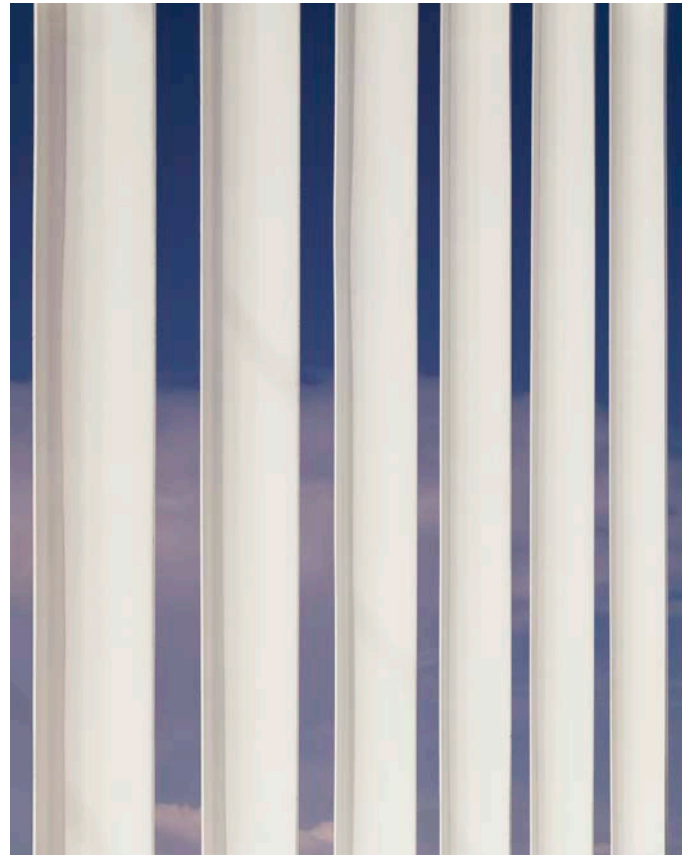
South elevation



Westerly rooftop



Steel pylon detail at deck

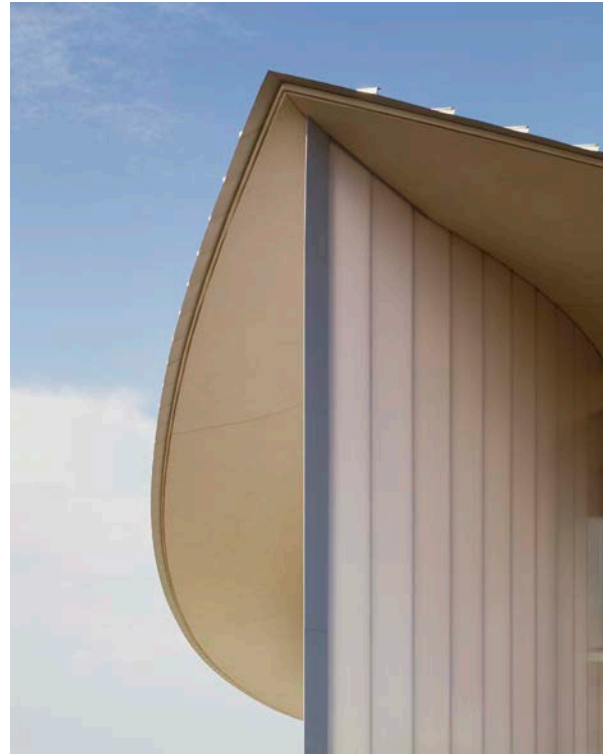


Signature steel pylons

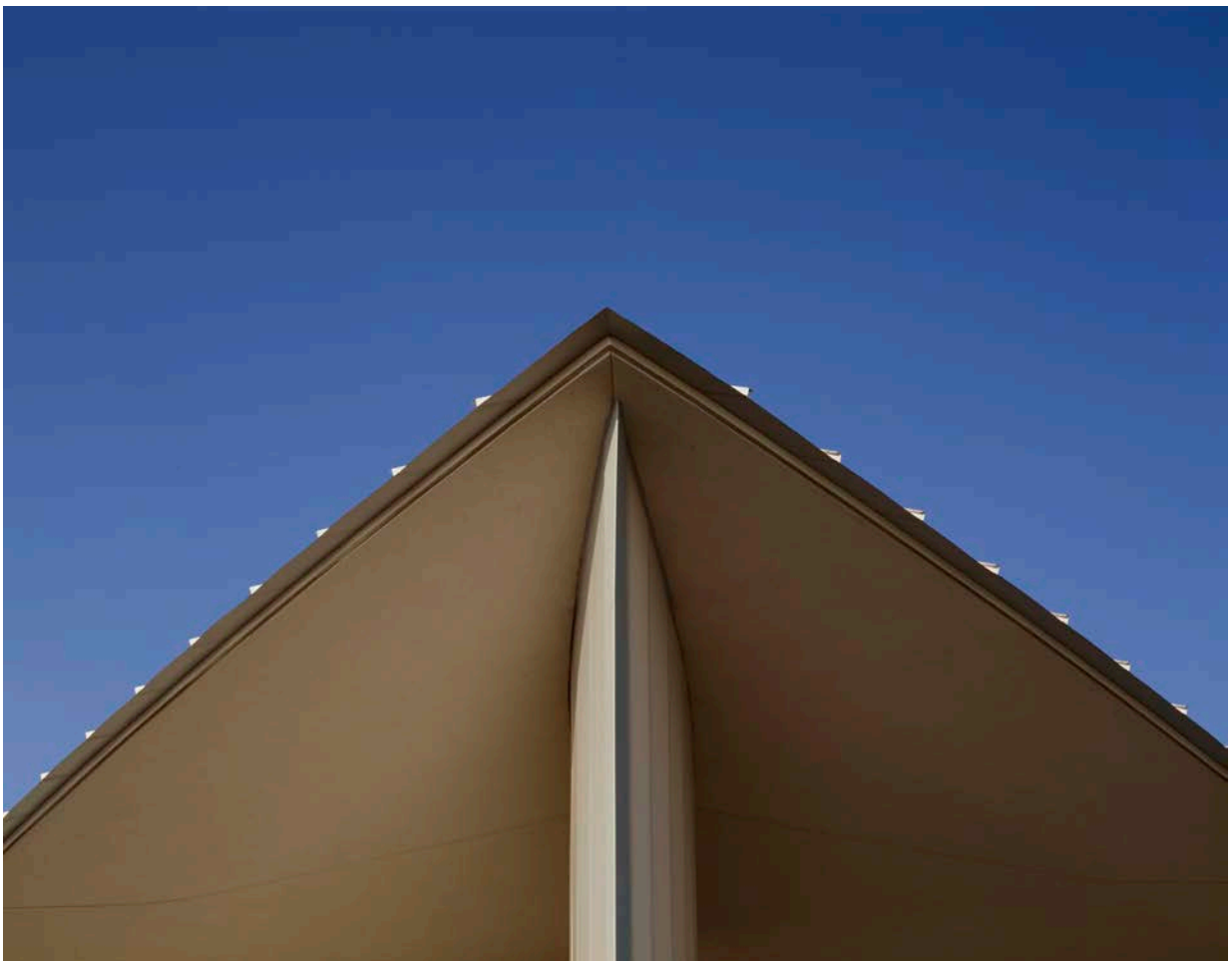
C H E S A P E A K E B O A T H O U S E



Northeast rooftop and "rudder"



Northeast rooftop



Northeast rooftop

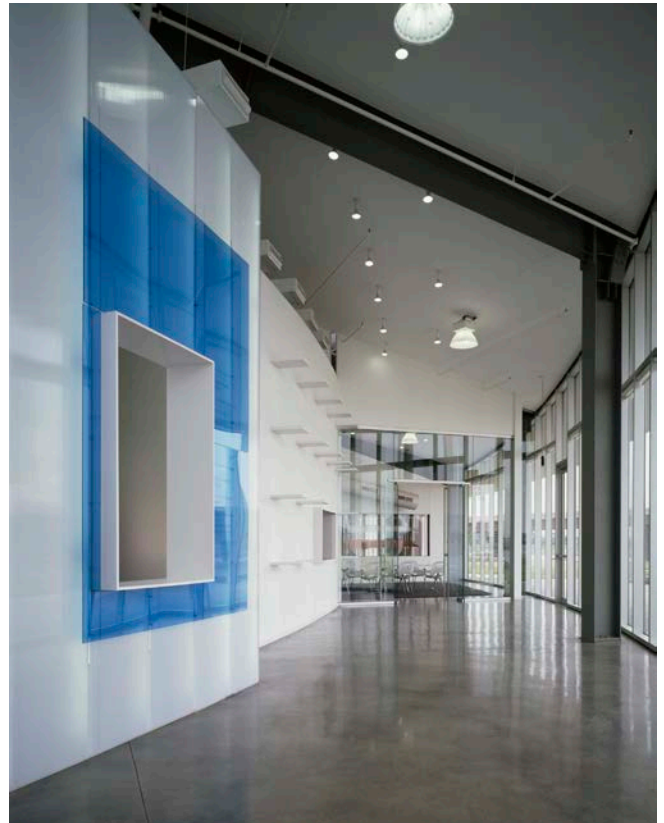
C H E S A P E A K E B O A T H O U S E



North elevation boat storage access door



Northeast corner looking east towards the "rudder"



Entry lobby

C H E S A P E A K E B O A T H O U S E



Reception wall with donor recognition



Southwest corner



Fitness room looking southwest



Locker room corridor looking southwest

C H E S A P E A K E B O A T H O U S E



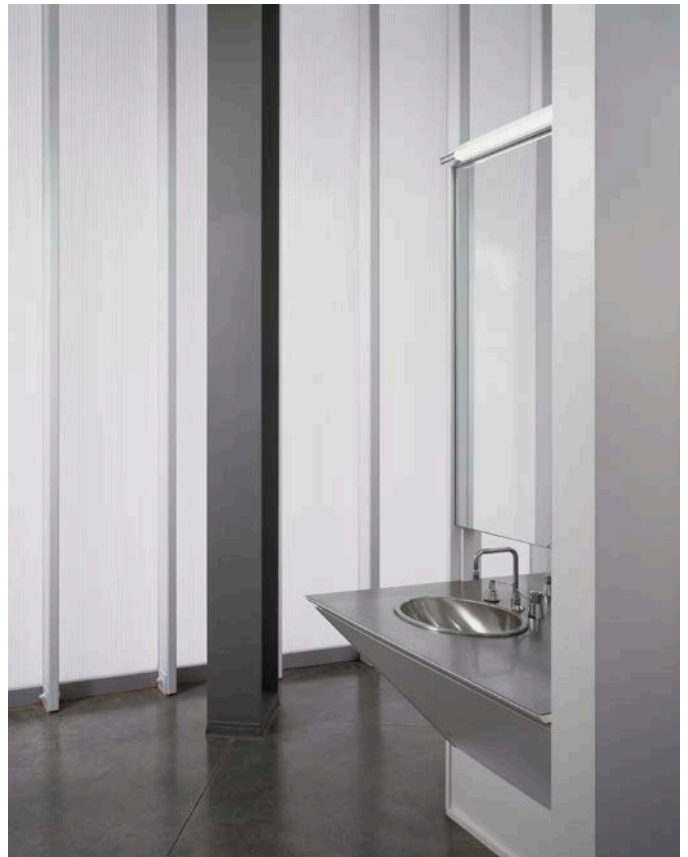
Locker room entry



Locker room looking north



Locker room



Locker room

C H E S A P E A K E B O A T H O U S E



Boat storage



Boat storage looking southeast towards the river