



Dusk view from the bridge looking north.



View looking north from the bridge. Notice balcony on upper right.



View looking north with the Deep Fork Creek in the foreground.

Client: Chesapeake Energy Corporation
Completion: January 2012
Scope: 47,932 sq ft
Cost: Confidential per client's request
Awards: 2013 World Architecture Festival, short-listed finalist in Office Category; 2012 AGC Build Oklahoma Award

Program Requirements:

1. Add a second auditorium on campus that seats 232.
2. Add a third on-campus restaurant that seats 138 inside and 48 outside.
3. A banquet room for special events that seats 144.
4. Provide a board room for quarterly board meetings.
5. Private dining rooms for 8-12 people for lunch meetings.
6. Provide a 2,843 square foot catering kitchen to provide food for meetings all over campus.

Architectural Concept:

This building is located next to a creek that bisects the campus. This building is curved and all glass to differentiate it from the brick office buildings and to make clear that this is a public building like the other two all glass buildings on campus (the Conservatory Restaurant and the Fitness Center East Addition).

The curve in the building follows the curve of the creek. Chesapeake wants to demonstrate that natural gas is a much more eco-friendly fuel for cars and a greener alternative to using coal for electrical generation. The vertical trellis on the west side will support *Coloratus* vines that when mature will provide shade from the afternoon sun and is a reminder that Chesapeake is a green company.

The Blue Hackett stone on the exterior and the sandstone stone floor provide a rustic counterpoint to the smooth wood, stainless steel, and glass surfaces. The full height wood doors slide open to reveal coat storage closets used during special events.

A curved light box above the serving line helps bring the natural landscaping beauty outside the building into the dining room and provides a beacon at night that is visible from other parts of campus.



West elevation/detail of 2nd floor balcony. Notice green screen clad columns for Coloratus.

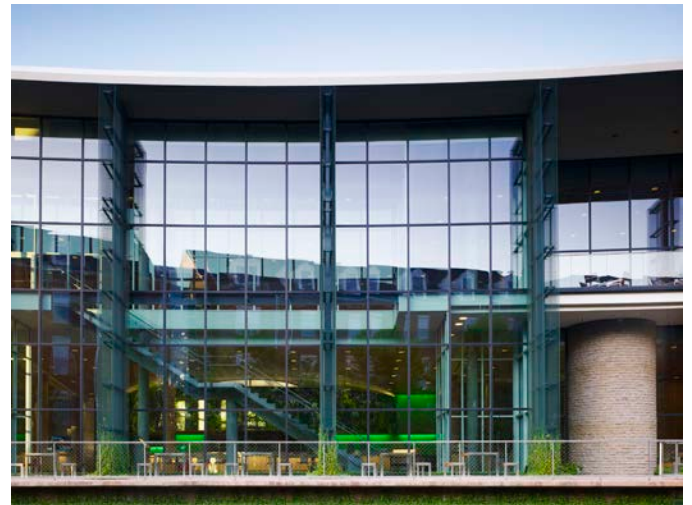


Northwest corner detail with cantilevered corner and stone cylinder

The round concrete columns and the stone enclosure at the two round booths inside the restaurant offer both an “attaboy” to the craftsmanship of the carpenters and help reinforce the curved theme of this building.

Each of the private dining rooms on the second floor provides stunning views of the creek and campus. Each room is named for a tree that grows in Oklahoma and the wood table in each room is built from its namesake tree.

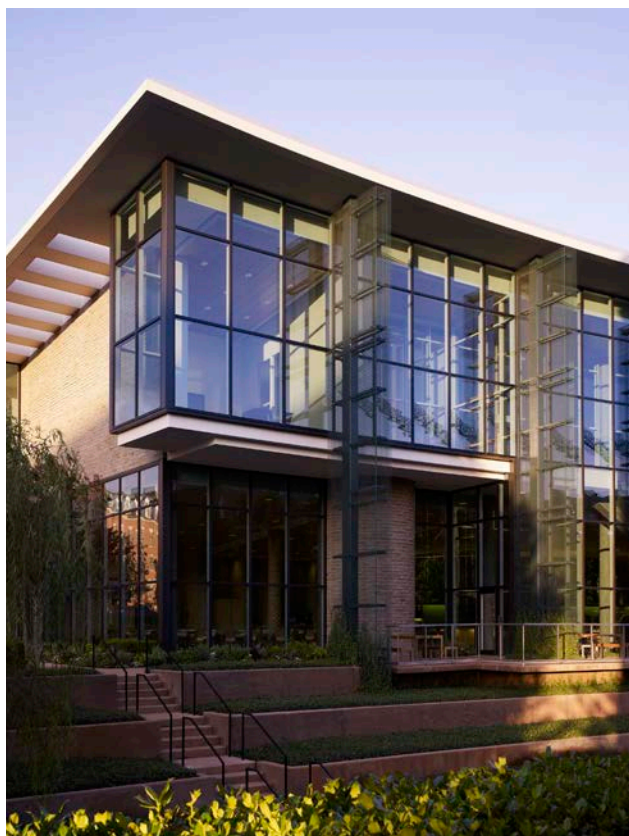
The wood chairs in the first and second floor elevator lobbies were selected because the form relates to the building and the rich wood surfaces relate to the lush landscaping outside. The linear aluminum ceiling has a maple veneer surface and is perforated to help control the noise in the restaurant.



Partial West elevation with stone cylinder which is a booth on the interior



Partial West elevation with stone cylinder which is a booth on the interior



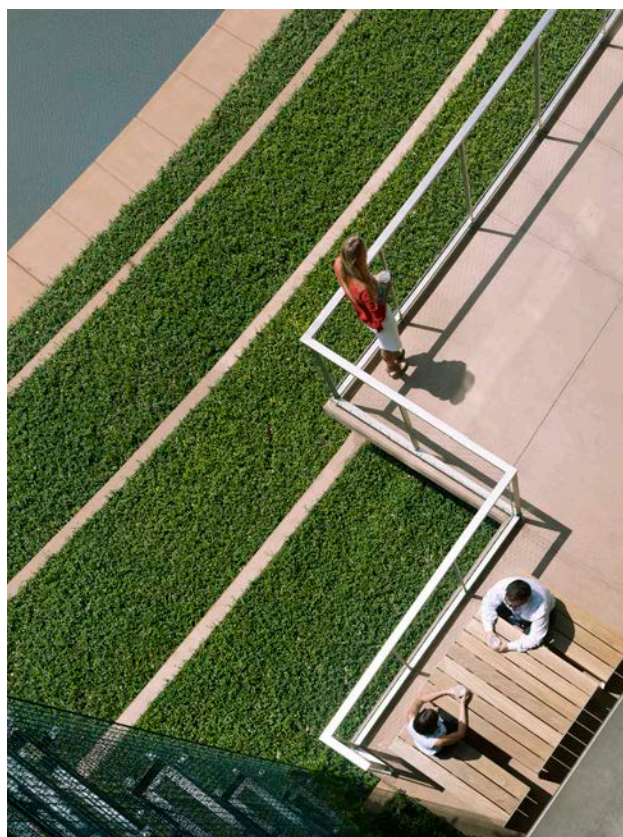
Northwest corner detail with cantilevered corner and stone cylinder.



Northwest corner detail.



Boardroom balcony looking northwest. Notice green screen columns.



View from balcony to the water's edge below showing outdoor deck.



Northwest corner showing cantilever detail.



Northwest elevation detail.



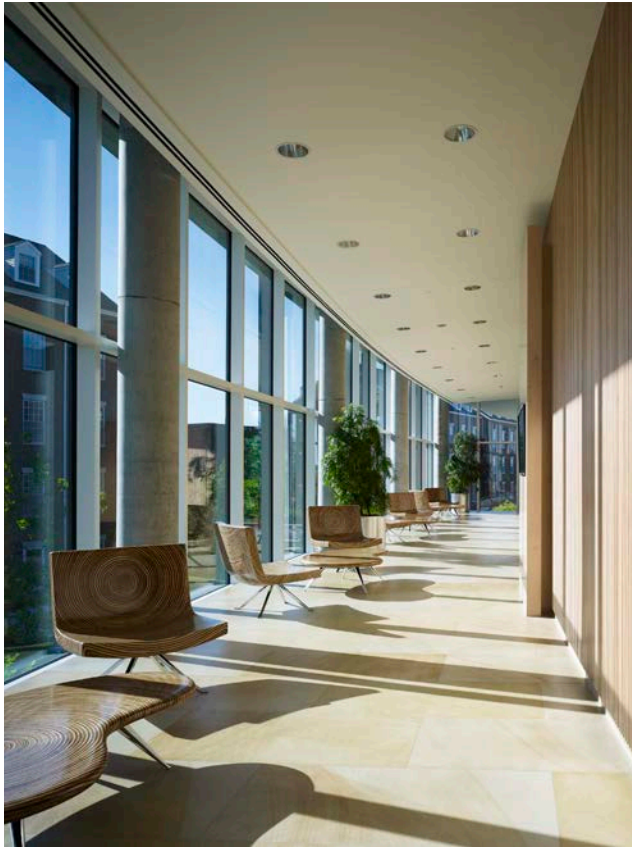
Dusk view looking south showing north entry.



View looking northwest showing southeast corner.



View looking northwest showing southeast corner.



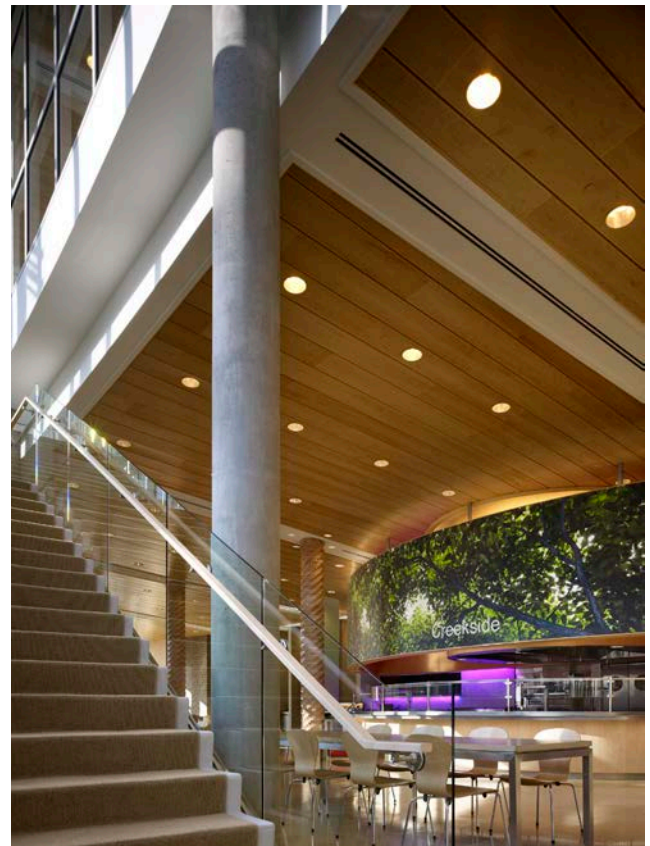
East elevator lobby.



East elevator lobby detail.



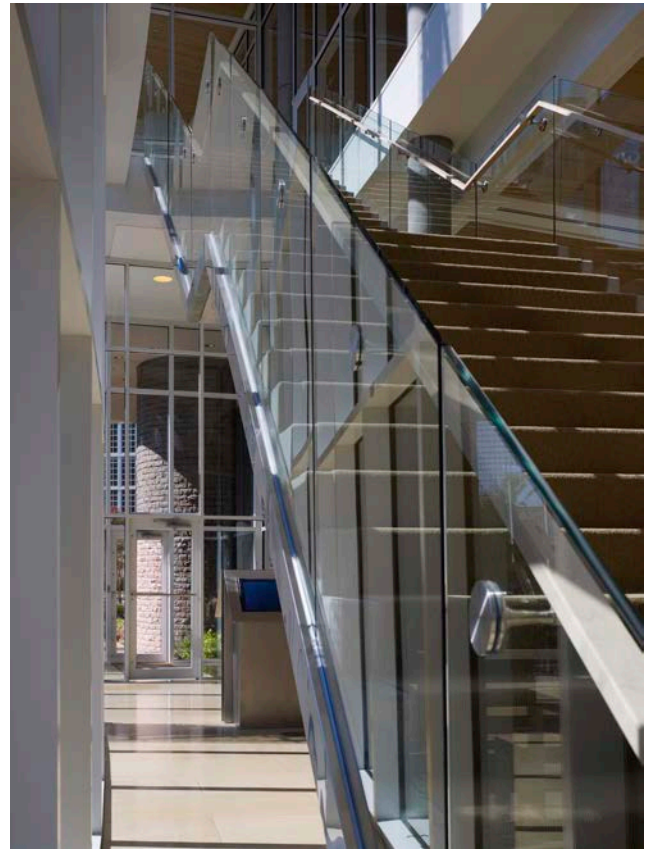
Dining room stair view looking west.



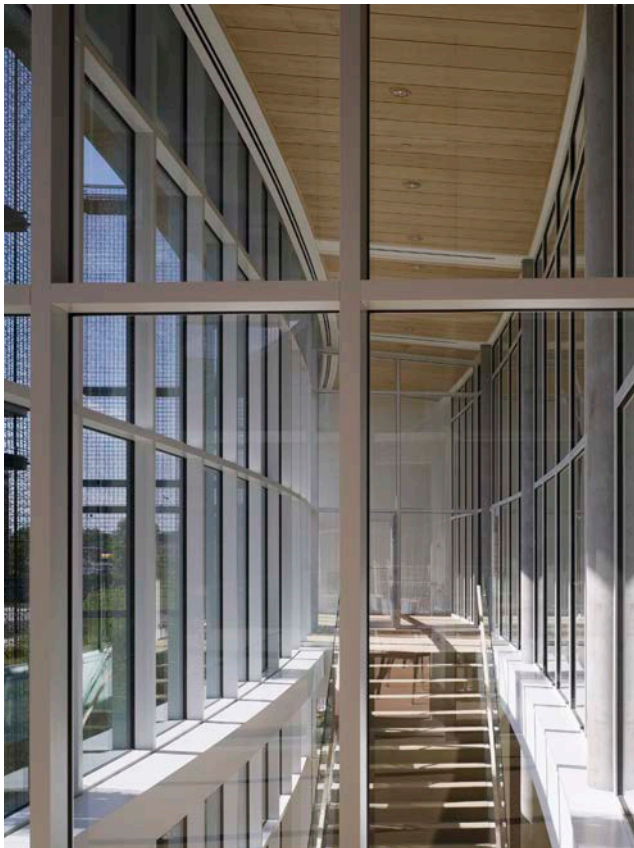
1st floor stair landing with view towards restaurant.



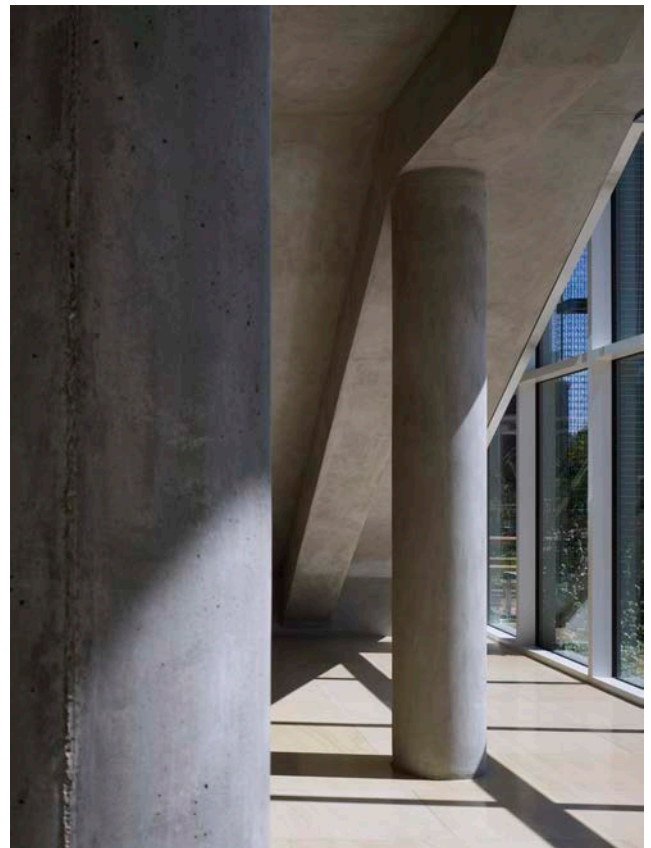
West curtain wall and stair detail.



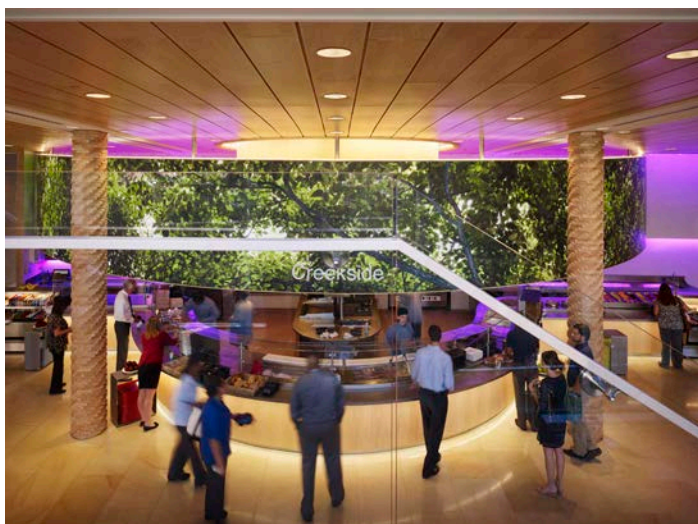
Stair railing detail.



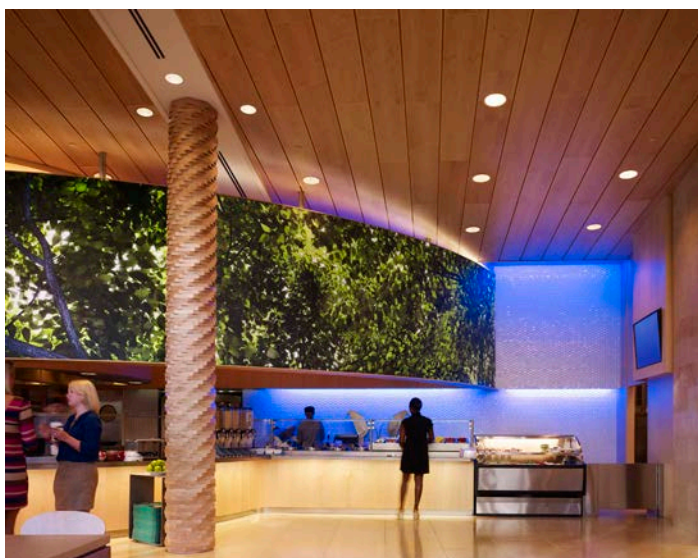
View looking north from the events space.



Stair support detail.



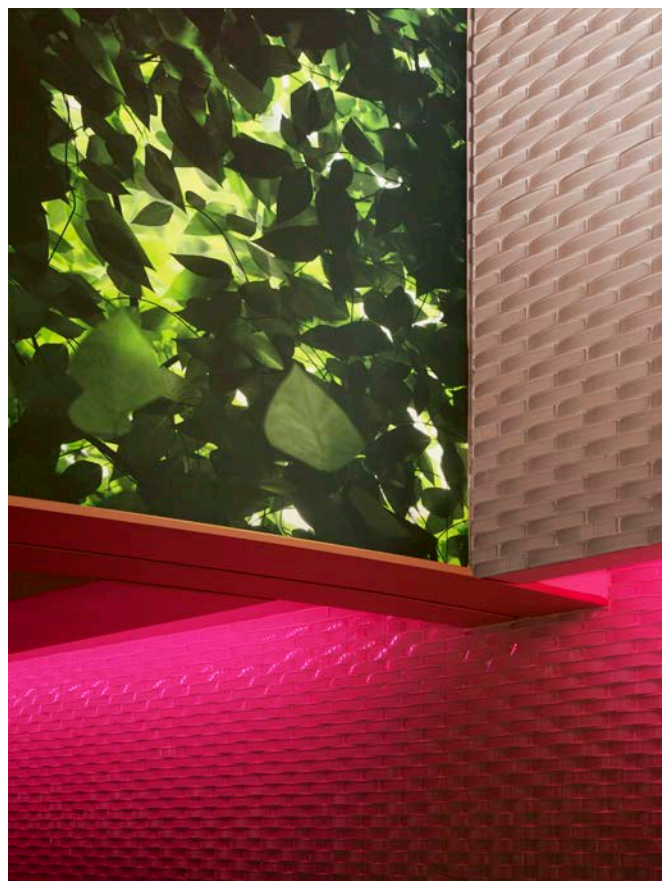
View of restaurant from stair landing.



View looking east towards serving line in main dining room. Notice backlighting graphic.



Dining room view looking south..



Glass tile/lighted graphic intersection detail.



Serving line with backlighting graphic and exhaust hood



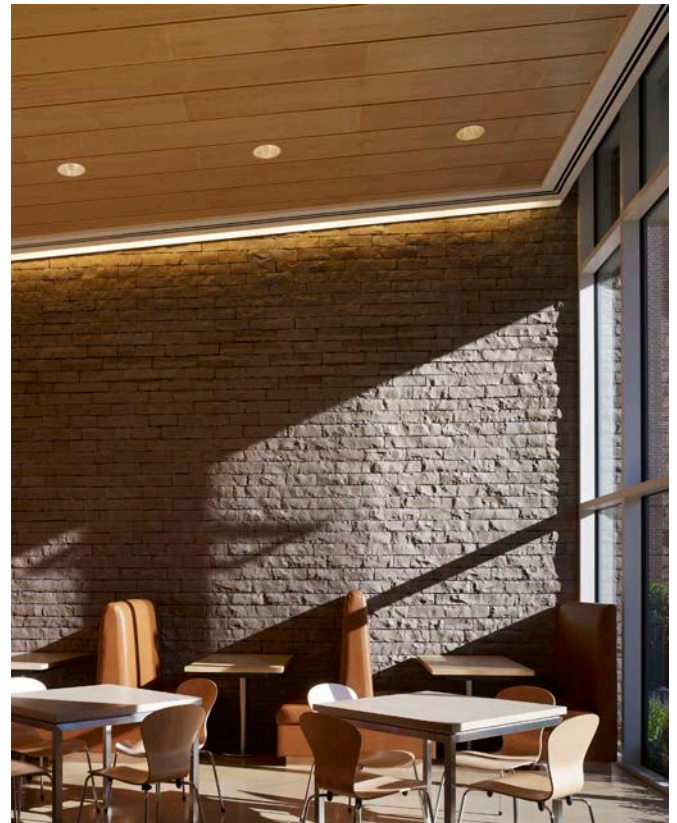
North edge of main dining room. Notice sculptural wood column.



Dining room view to the north. Notice sculptural wood columns.



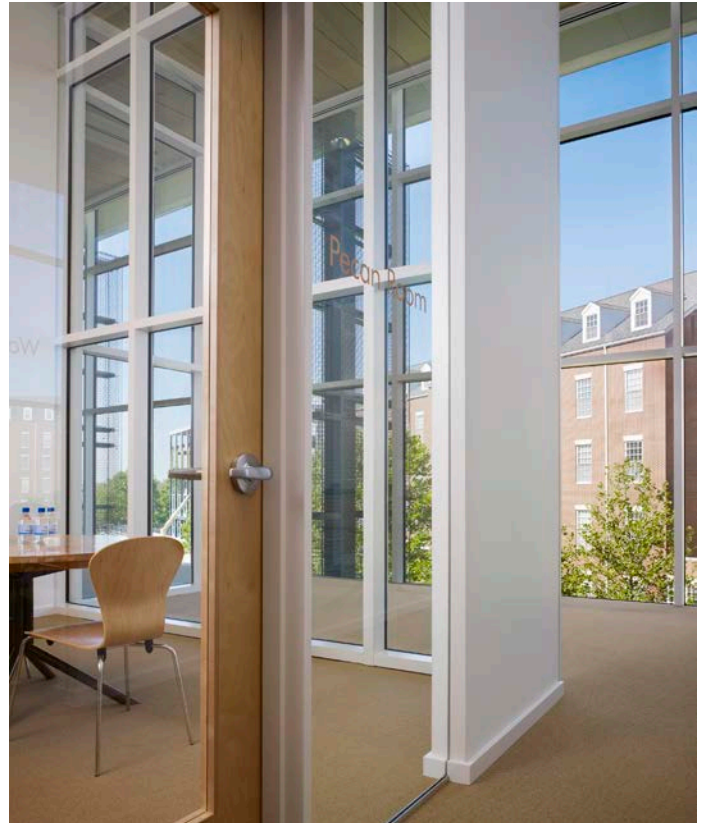
Stone cylinder booth enclosure.



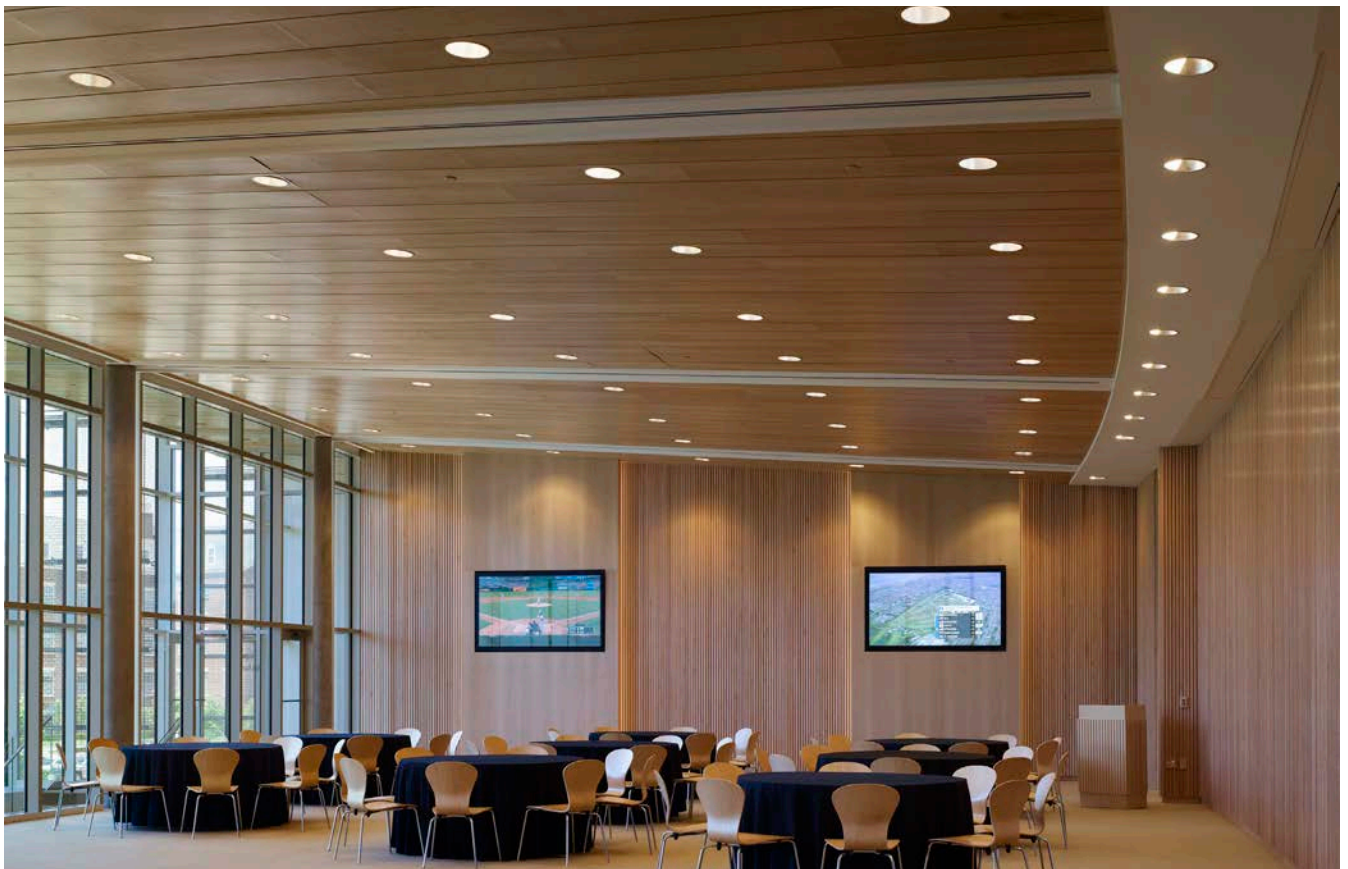
South end of main dining room with stone wall.



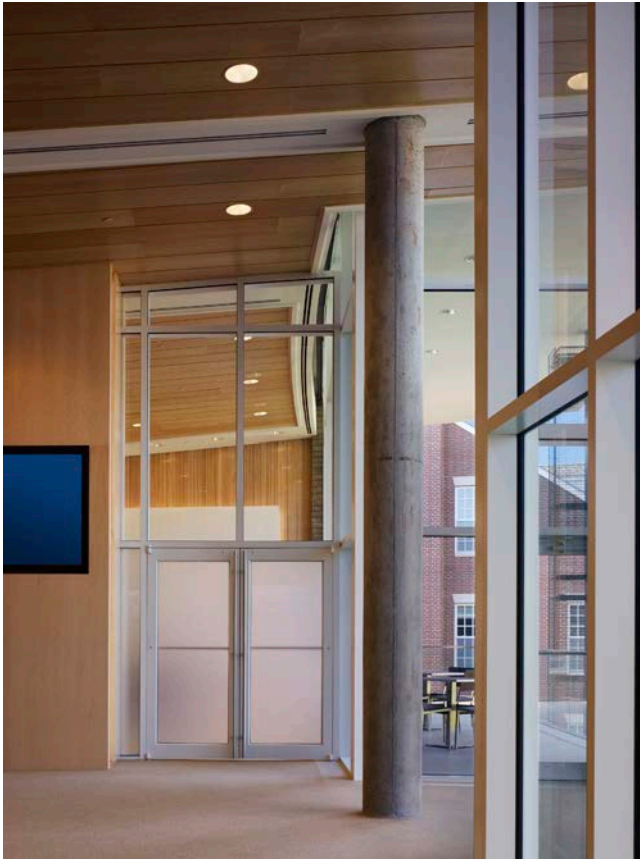
East wall of the main dining room with exposed concrete column, limestone walls and wood doors.



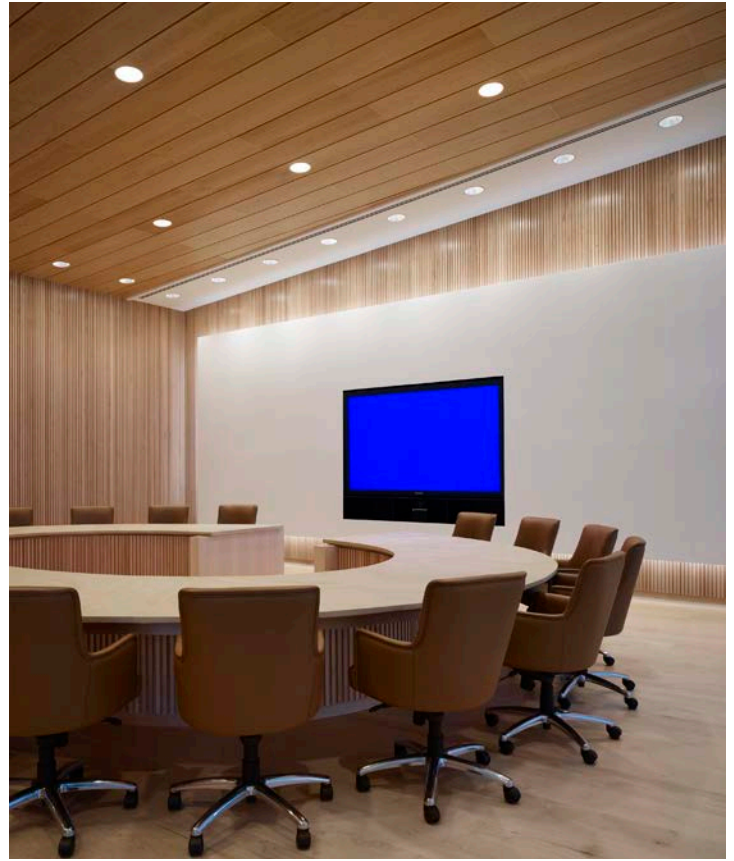
Private dining space looking west.



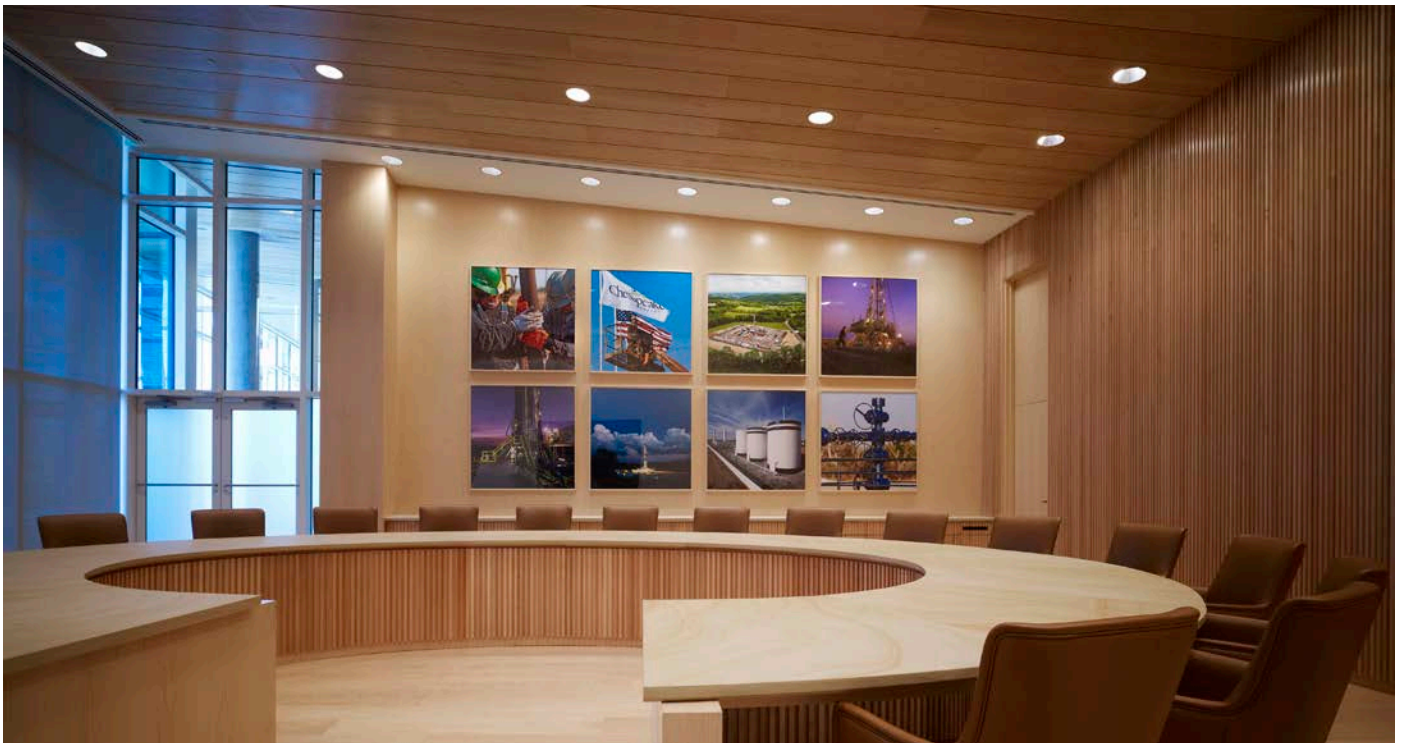
2nd floor event space shades open.



Boardroom entry from event space on 2nd floor.



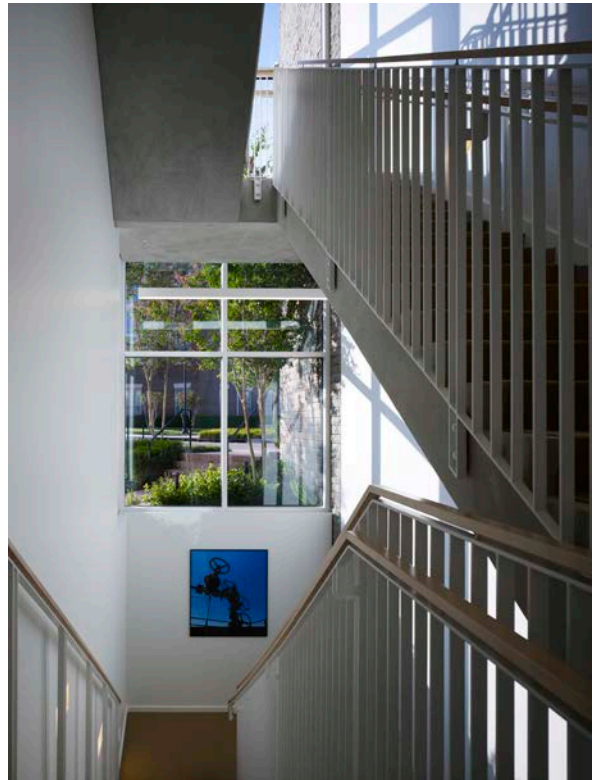
Boardroom table/presentation wall detail.



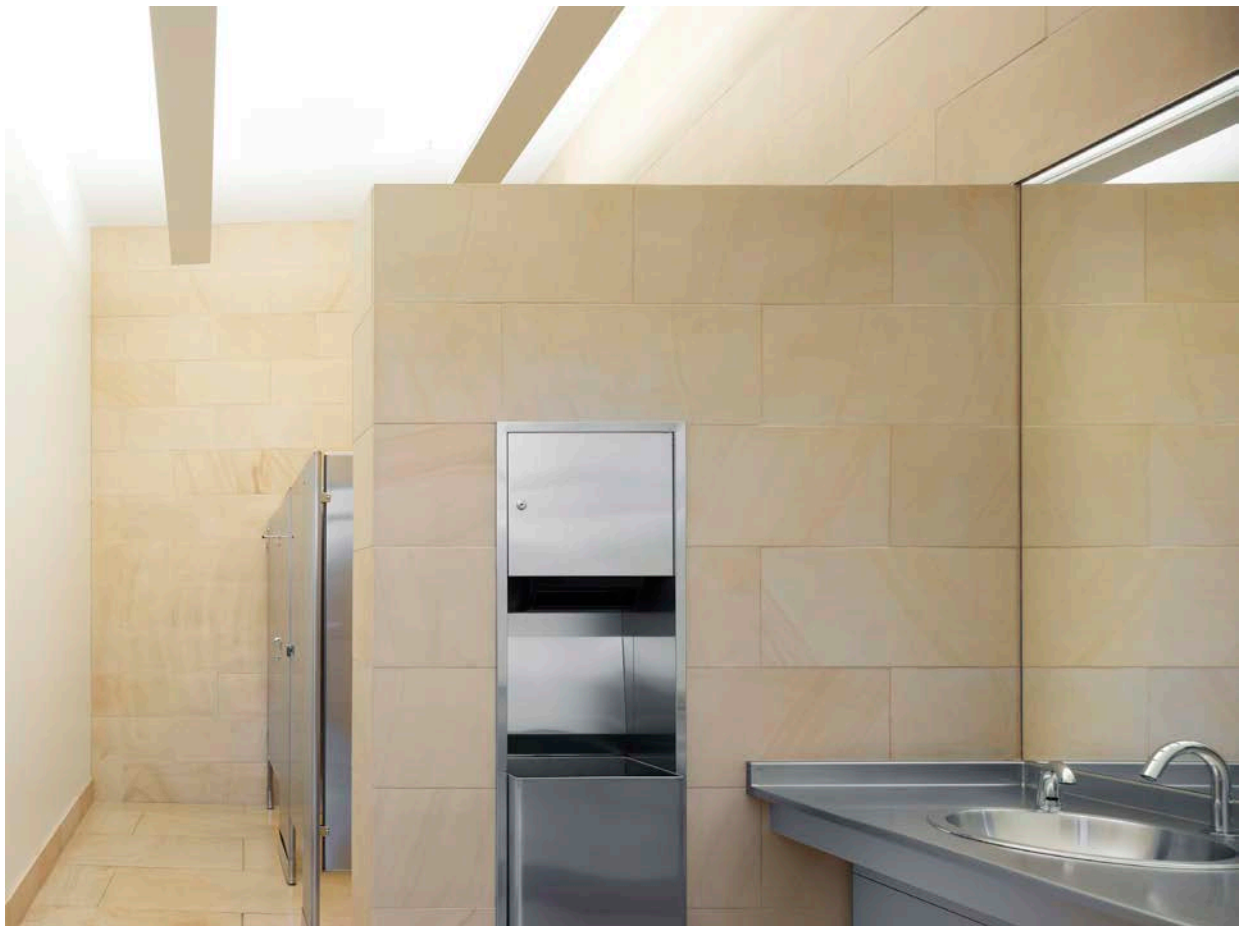
Boardroom looking north.



Sliding storage doors to serve event space.



North stair view to the north.



Typical restroom with limestone floors and walls.