

The northwest corner of the building where the ceremonial stair visually connects to the original campus.

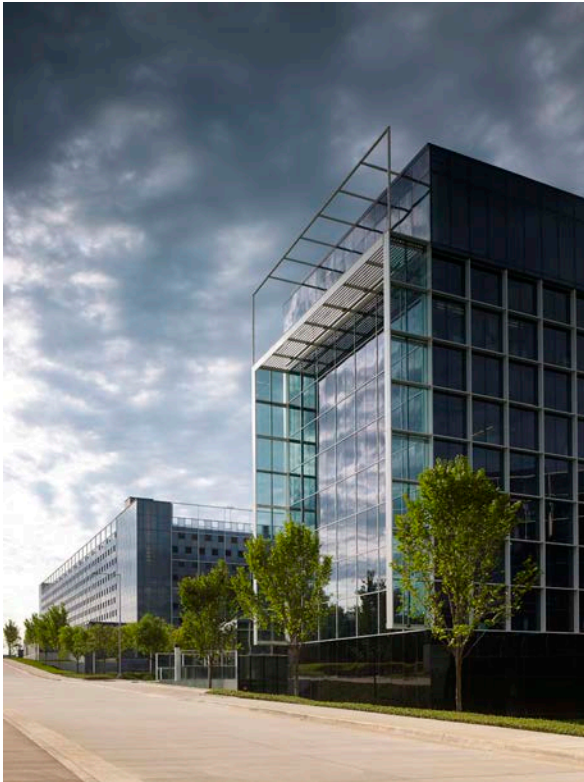


View looking southeast at the stair wing for Building 14. The square grid Brise Soleil was created to connect the architecture to the precision of the IT department.

Client: Chesapeake Energy Corporation
Completion: March 2014
Scope: 230,664 sq.ft.
Cost: Withheld per Owner's Request

Architectural Concept:

1. Create a **flexible** floor plate to follow the Chesapeake standards that continue the Building 13 model.
2. The connection to the Historic Campus comes by using the color **white**, the **52'** planning **module** and the concept of the Bay window "**lanterns.**"
3. The "**out-stretched**" **arm form** reaches toward the Historic Campus, "breaks down" the large scale of the structure, and lets sun **penetrate** deep into the site.
4. **Scale, proportion** and **materials**, create Firmness Commodity and Delight as John Ruskin said...
5. The architecture is **refined, sophisticated** and befitting of the Chesapeake stature.
6. The Cartesian grid is inspired by the building user IT. It is an interpretation of the data, circuitry, order, stability and precision that IT symbolizes. It is the **information energy** of the company.
7. Make the corners into a lantern, and the campus connection.
8. Each building will have variations in plan and skin... and all will be compatible.
9. Continue and expand the vocabulary of Chesapeake 13 & Parking Garage 2
10. The architecture will be quiet and simple, with punctuation
11. We have envisioned the use of high performance glass and sun controls to enhance the energy efficiency of the building.
12. We want to **catch** the sun and **control** the sun.
13. All exposed surfaces that are visible have been considered
14. We have transformed the **infrastructure into sculpture**, including the generators, transformers and mechanical equipment.
15. There are a few unexpected gestures that add surprise and points of inspiration to the experience of working in Building 14.
16. Building 14 includes: A 6th floor/rooftop restaurant to seat 150 with outdoor decks and great views of the Campus and DT. The rooftop concept adds another restaurant option for the campus population.
17. Building 14 is our best building to date for the Chesapeake Campus.



A view looking east southeast at the north elevation of the office space with Skyline Restaurant on the top level. The glass portal provides west sun protection. The open frame is an LED light.



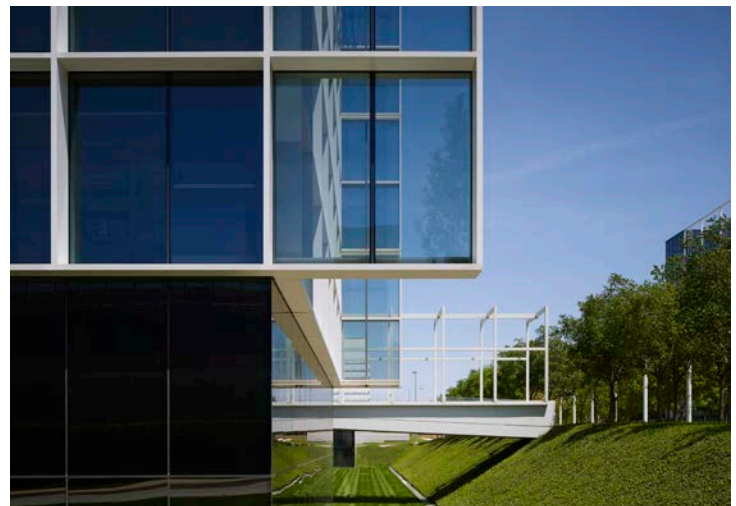
A view looking west southwest at the north elevation of the office space with Skyline Restaurant on the top level. The glass portal provides west sun protection. The open frame is an LED light.



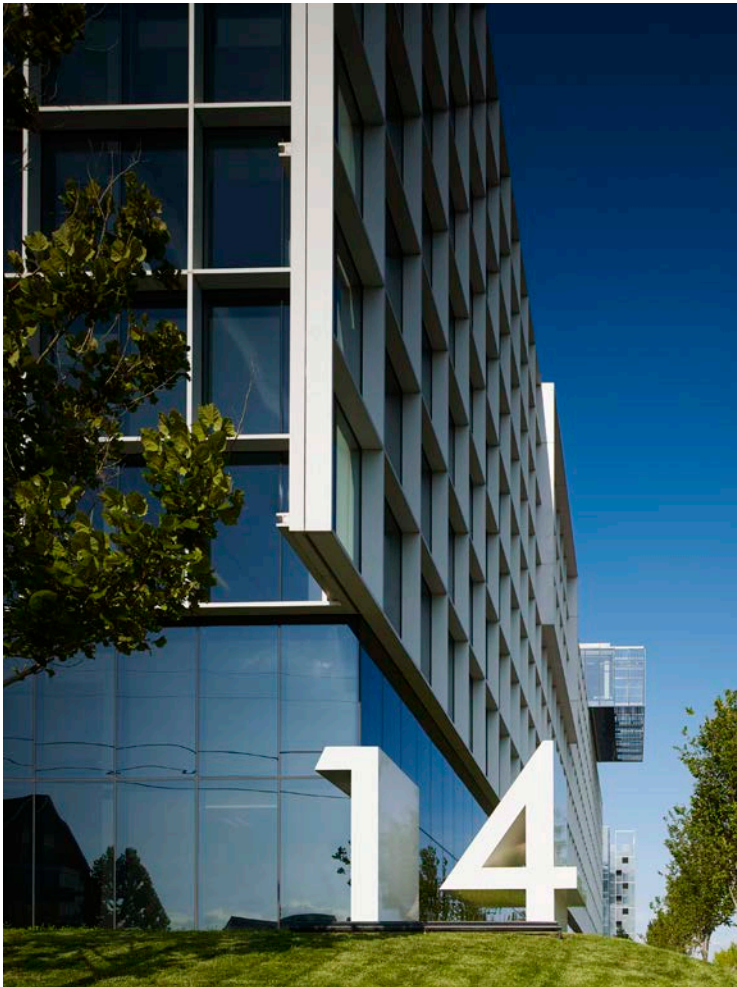
The northeast corner looking south. The site drops 10 ft. to create a pocket park. On the roof of the east/west wing is the outdoor dining space.



The north elevation looking south at the ceremonial stair. Seeing people move inside the space activates the building and provides a visual connection to adjacent campus buildings.



A detail of the square grid Brise Soleil extends beyond the elevation to create additional sun protection. The ground level glass is darker than the main building and makes the building "float" above the ground. The level change of the site requires a bridge connection to the entrance.



The square grid Brise Soleil is clearly articulated and the dark glass of level one “floats” the building above the site while the number 14 provides monumental identification. The cantilevered form beyond is the Skyline Restaurant.



The square grid bris soleil is placed on each elevation that requires sun control. The adjacent elevation facing north does not require the same detail.



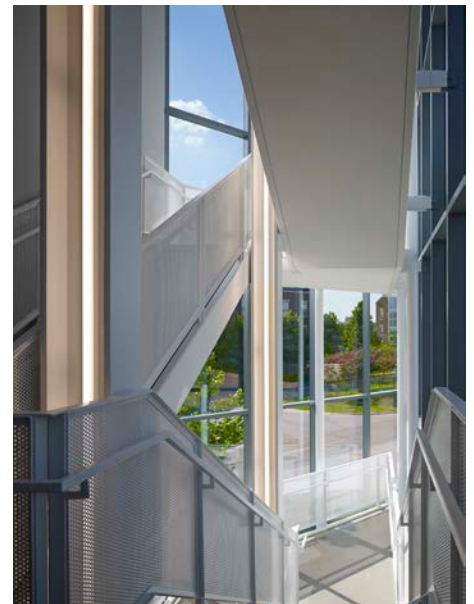
A view looking west from Car Park Three towards the main entrance which is a bridge enclosed by a tubular portal. Skyline restaurant on the top floor is articulated differently than the main building skin.



A detail of the entry bridge on the east side of the building. The square grid translates to become structure for the bridge entry.



The northwest stair acts as a glass vitrine for people. Vertical column lights make the stair into a glowing lantern at night. The 5th floor landing provides an aerial view of the adjacent campus.



The ground floor landing provides an elevated view of the adjacent campus. The transparency of the space acts as a relief to the office environment.