



The southwest corner of the campus entry, Building 15 stands as landmark building representative of the corporate dynamics.



The northwest corner entry faces and acknowledges the original campus west of Classen Boulevard.



The west elevation illustrates the roof edge sunscreen, glazing vertical fins and the polished stainless steel mechanical enclosure.

Client: Chesapeake Energy Corporation
Completion: November 2013
Scope: 252,000 SF
Cost: Withheld per Owner's Request

Campus Context:

- As the Chesapeake Campus has developed, we created the concept of **jewels**. These are unique works of architecture that complement the red brick buildings and add energy to the campus plan.
- All the buildings find inspiration from beautiful scale and proportion.
- They **fit** together and the spaces **between** buildings are as important as the structures themselves.
- The bay windows that act as **lanterns** of energy.

Key Points:

- This is a **cornerstone** building based on its visibility and location on the corner of NW 59th & Classen. This is the southwest corner of the campus.
- The building is 252,000 s.f. including 5 floors and 1 basement. The 52'W planning module is used. We have approximately 874 offices.
- Each new building on the East Campus is **glass** and each will have a **unique skin** making each **different** and **compatible** as a part of the whole.
- The white detailing, glass color and sun shading connect the East Campus together and the color white **connects** to the Historic Campus
- You will see ideas for **public art** and a water feature.
- We are also investigating **ideas for the glass** to improve overall energy efficiency. Low-E which is pretty normal, but Argon Gas fill and warm-edge spaces were nice additions because we were able to show the owner that these features would pay for themselves. Fritting was also investigated, but not used.
- The concept for the glass skin reflects the idea of horizontal earth **strata** and the idea of **vertical** exploration.
- There is a focused **visual connection** and **pedestrian** connection to the Historical Campus and the **linear park** of the East Campus.
- One very memorable detail is "**lanterns**" at the SW tip and the SE tip. They symbolize the "**energy**" and the "**vision**" of Chesapeake.
- Basement area includes seven conference rooms of various sizes and (2) fifty-student tiered-floor training rooms, optimized for multi-media presentations.



The west elevation and entry acknowledges the original campus across Classen Boulevard.



The east elevation acts as a bridge form and enclosure for the central courtyard. The geodesic “bubble” symbolizes natural gas rising to the surface.



The east elevation with roofline sun shade.



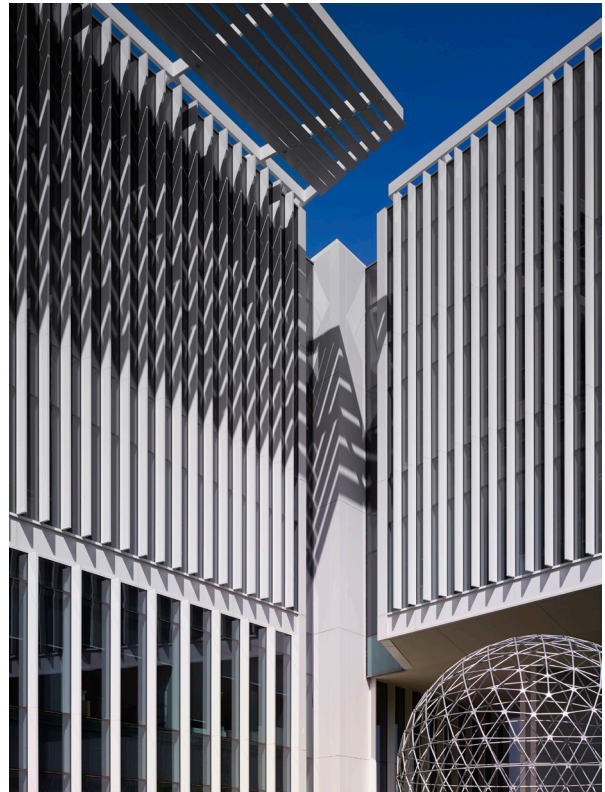
A view through the corner portal frames the shadows.



The southwest corner/elevation illustrates the effectiveness of the roof edge sunscreen. In the middle of summer the entire south façade is in shade.



The east elevation building "joint" acknowledges the 52' building module.



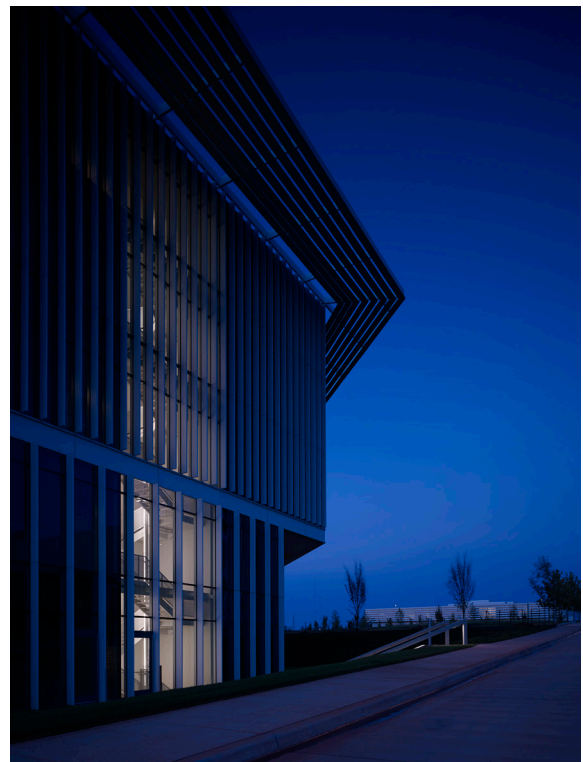
The east courtyard inside corner detail.



A view under the east building bridge defines the courtyard.



The second floor entry ramp terminates overlooking a courtyard of reflections.



The southern fire stair becomes a lantern at dusk.



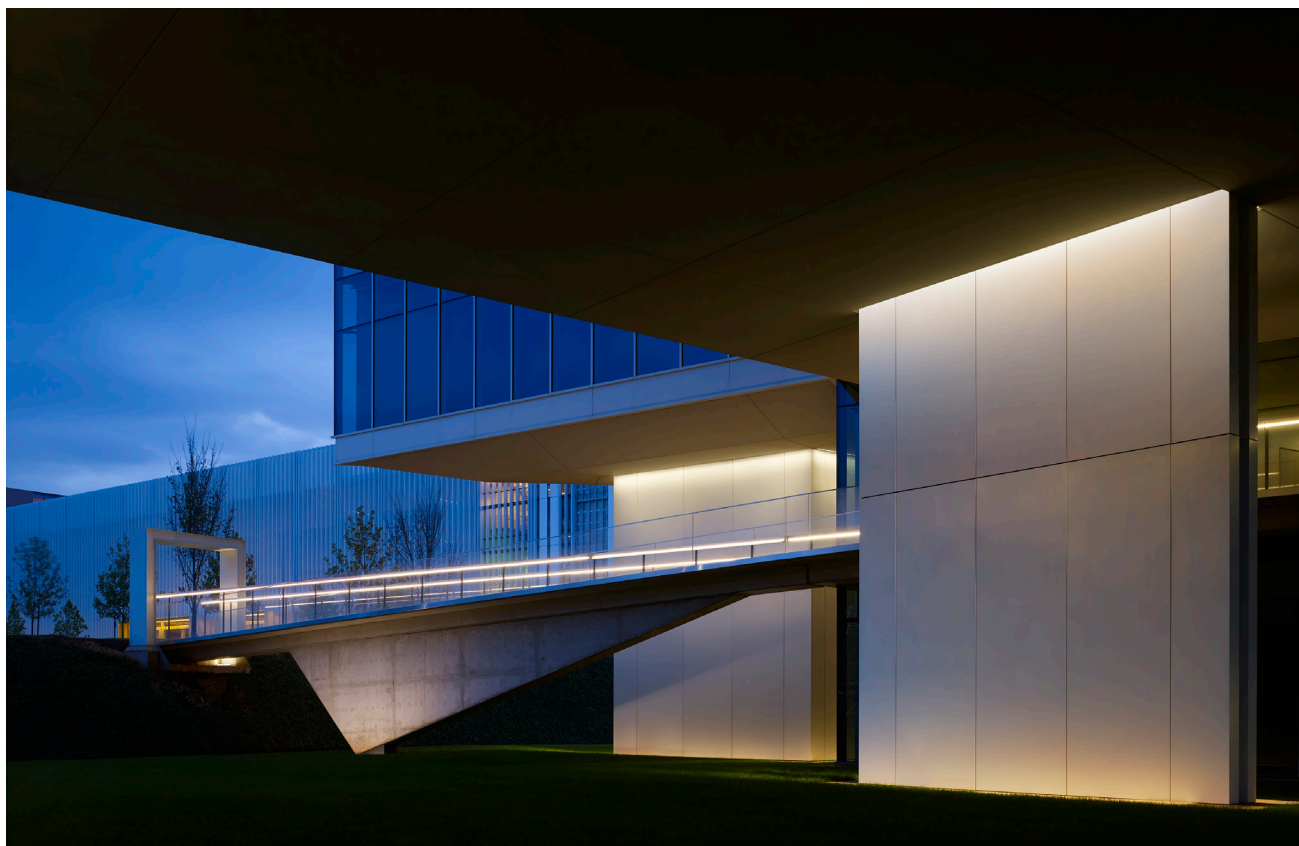
The northwest corner entry form is stacked break rooms overlooking the west campus.



The curtainwall, sunscreen, and geometry converge in reflection.



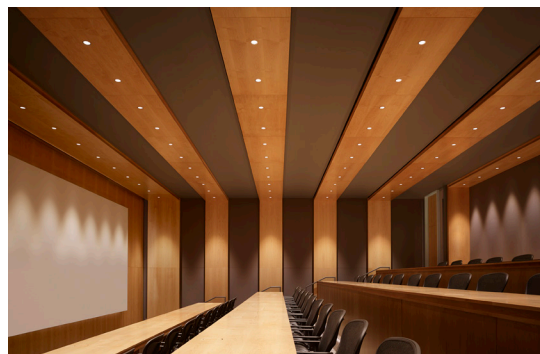
The west facing facades do not require solar shades.



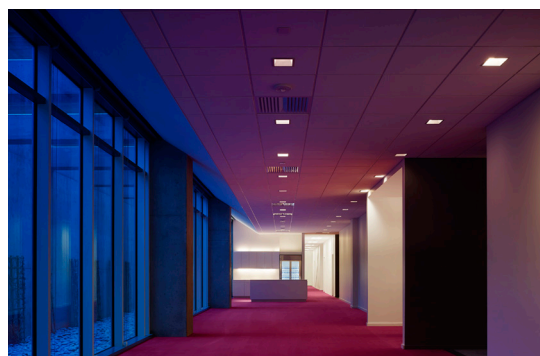
The east 2nd floor entry ramp penetrates into the courtyard.



The northwest entry lobby.



One of three seminar/presentation rooms in the building.



The lower level lobby supports the adjacent presentation rooms. A daylight atrium brings light into the lower level.