

C A R P A R K O N E A T C H E S A P E A K E



West pedestrian entry to Car Park One with view of interior atrium.



West elevation detail of elevator and stair of Car Park One.

Client: Chesapeake Energy Corporation
Completion: July 2011
Scope: 383,250 sf -5 levels with 170 cars per level
Cost: Withheld at Owner's Request
Awards: Architizer A+ Awards Finalist; AIA, Central Oklahoma, Merit Award; AIA, Central States Region, Honor Award; American Architecture Award, Chicago Athenaeum; International Parking Institute, Award of Merit; AIA Oklahoma, Merit Award

Exterior Appearance

The exterior of the building features staggered metal panels which function to screen views of the vehicles and provide airflow to qualify the building as an open parking structure. Internal ramps and screening vehicles from view is visually harmonious with the adjacent structures. The metal panels match details on the adjoining office building. Brise soleil on the west side of the garage visually connects the adjoining office building. Horizontal panels vary in size, with 6" slats at ground level for human scale, and change to 1', 2' and 4' widths as they rotate around the façade and add texture. There is no exterior lighting on the building. Internal lighting glows between horizontal panels.

Unique Design Features

Light and color are introduced into the structure to make the building a destination. To accentuate colors and provide illumination, the Architects installed T8 linear fluorescent lights end-to-end on each cross beam to uplight the ceiling plane. The design team was mindful of energy conservation issues, acknowledging Chesapeake as a leader in the energy industry. The lighting control system turns on fixtures during peak morning and afternoon hours. During off-peak hours, the system turns off every fourth row of luminaires to save energy.

Landscaping

The landscaping materials are consistent with the existing corporate campus grounds and also exceed city standards. There is a rotating program of seasonal color and internal planters at the atrium which mirror the outdoor seasonal plantings. Coloratus, an evergreen groundcover, provides a buffer at the building edges, softening the edges and perimeter, providing seasonal color and preventing damage from lawn maintenance equipment.

Way-finding

Each level of the car park features a primary color – Red, Yellow, Green, Blue and White – for users to easily navigate through the facility. Elevators are placed on the destination side with windows so users can visually connect the garage and their destination. The stairs improve the experience while being useful. Lighting was added in the stairwells to emphasize the color and level connection and to provide an atmospheric journey.

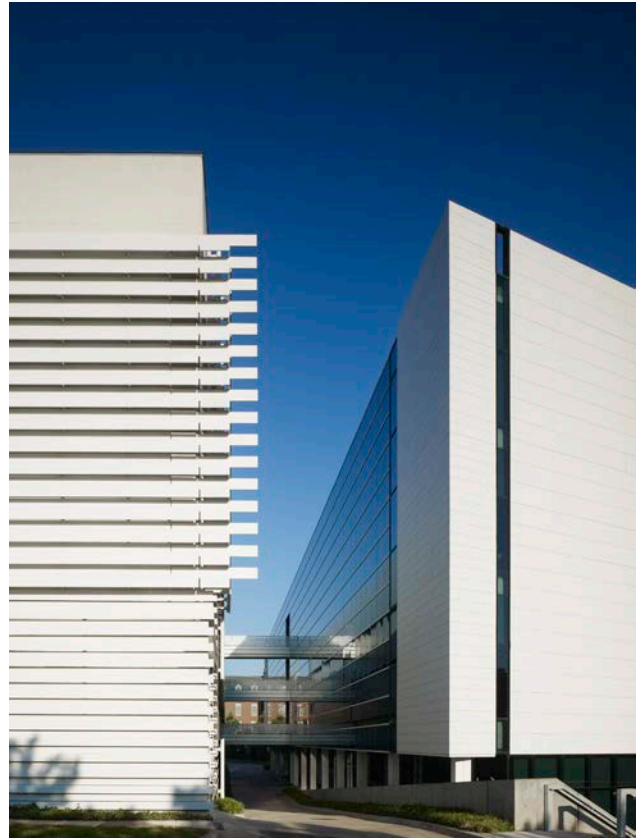
Public Areas

A surprise element is the full-height; 13' wide lighted atrium contributing to air circulation. The atrium contains a light sculpture using the floor level colors. Natural light is allowed into the atrium center making it safer and providing a relationship to nature.

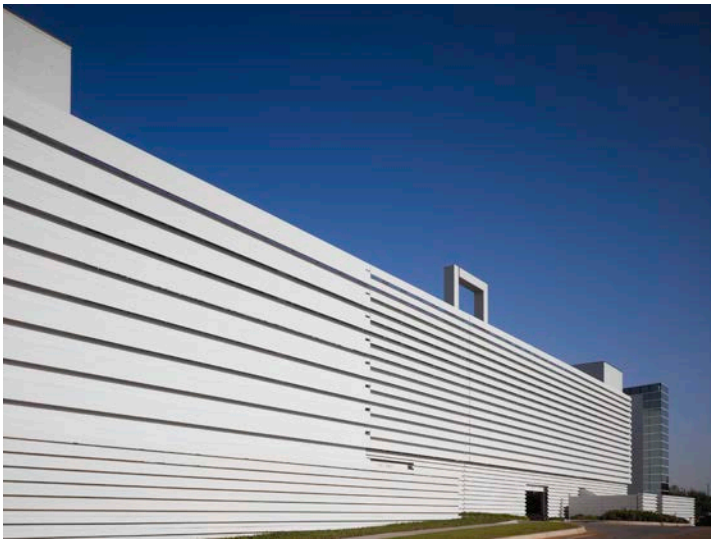
C A R P A R K O N E A T C H E S A P E A K E



South façade of Car Park One looking north northeast.



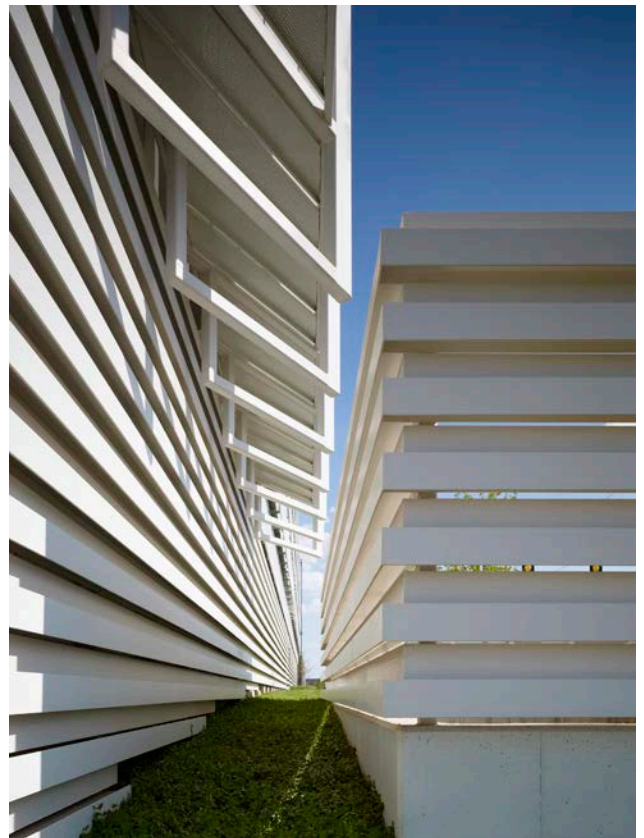
East elevation/detail at service drive.



East elevation.

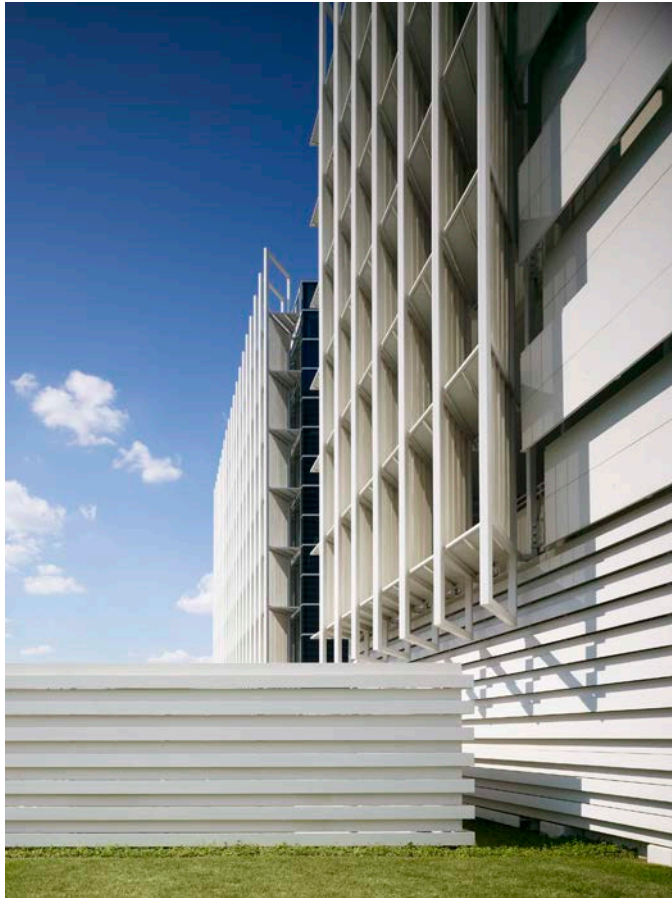


Northeast corner of Car Park One and Building 13.



Brise Soleil detail at Car Park One west elevation.

C A R P A R K O N E A T C H E S A P E A K E



Brise Soleil "connection detail" on west elevation.



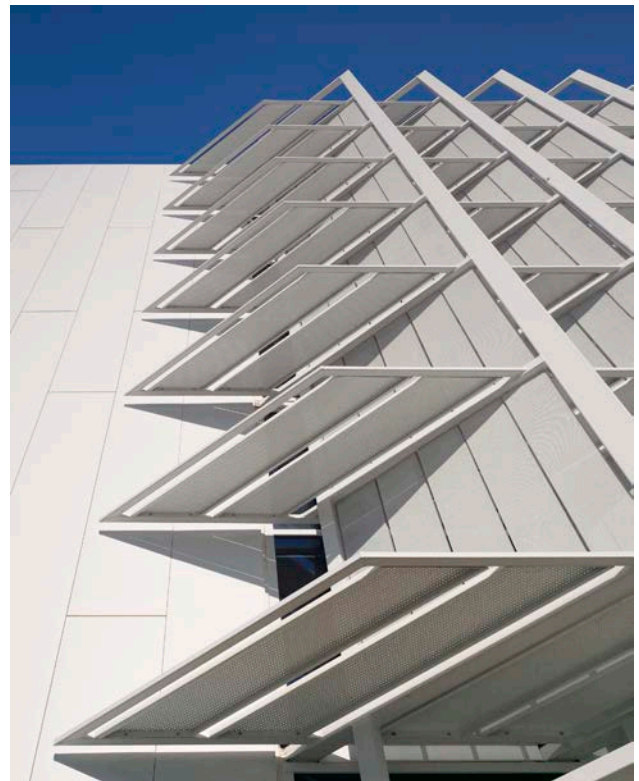
West elevation with Building 13 on left and Car Park One on right. Brise Soleil "connects" across the service drive.



Building 13 Brise Soleil detail



Brise Soleil "connection detail" on west elevation.

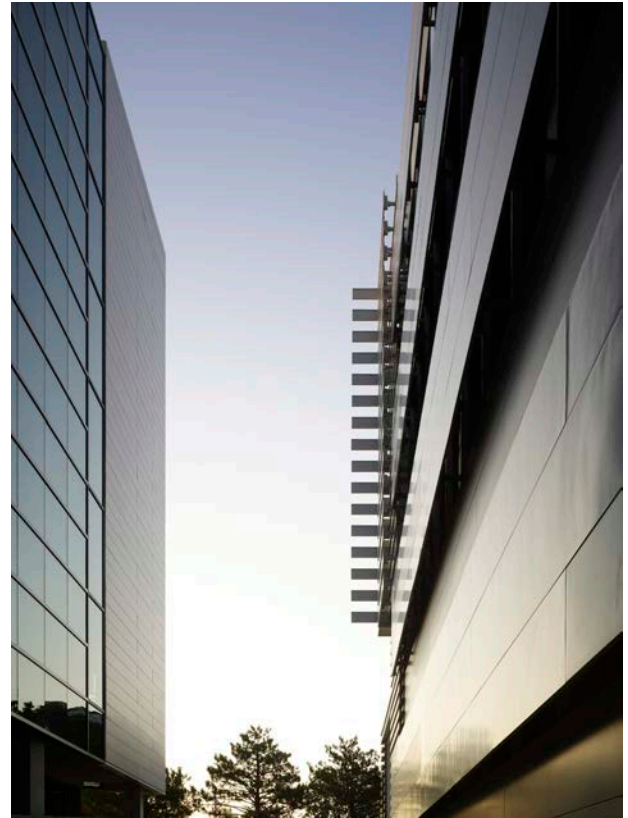


West Brise Soleil detail at Building 13.

C A R P A R K O N E A T C H E S A P E A K E



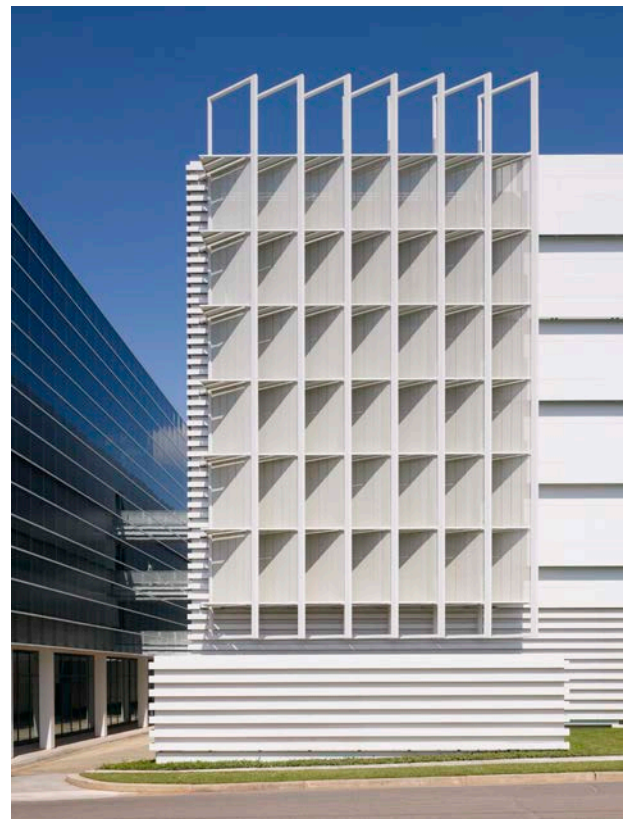
Looking west at service drive/ bridge access from Car Park One (left) to Building 13 (right).



Detail at service drive, looking east with Building 13 on left and Car Park One on right. Finger joint "connects" to panels across the space.



West connection of Car Park One (right) and Building 13 (left).

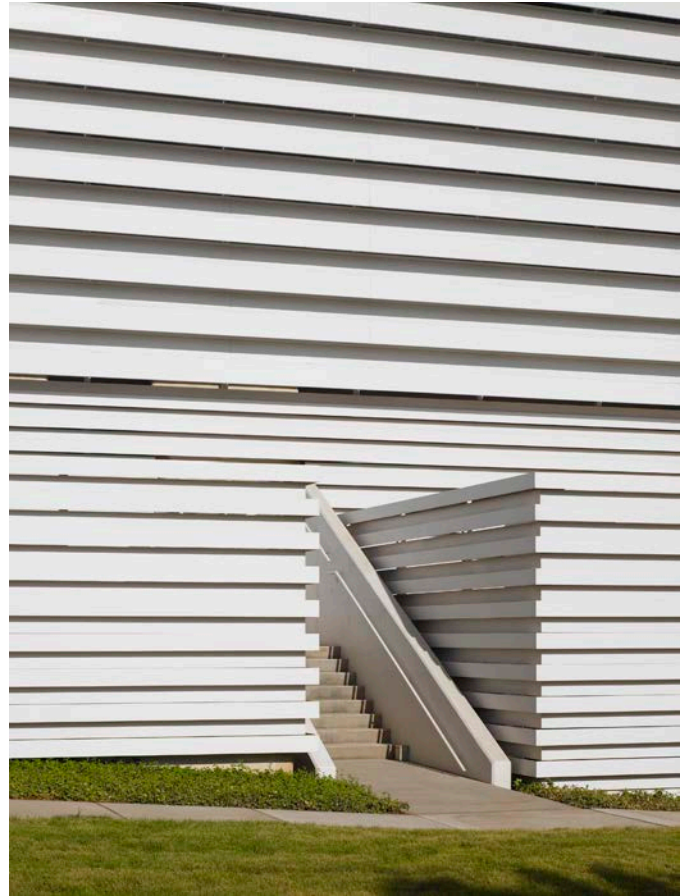


Car Park One Brise Soleil "connection" at service drive

C A R P A R K O N E A T C H E S A P E A K E



East elevation detail.



East pedestrian entry at Car Park One.



Southwest corner of Car Park One.

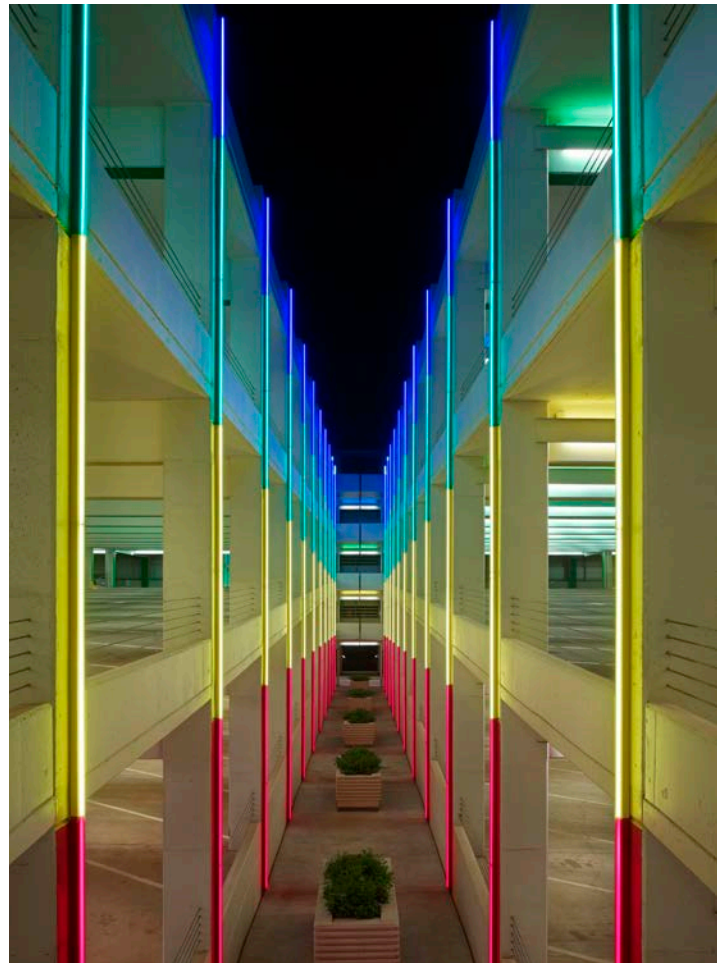
C A R P A R K O N E A T C H E S A P E A K E



Car Park One atrium view looking west.



3rd level parking at southeast stair.



Atrium looking west.

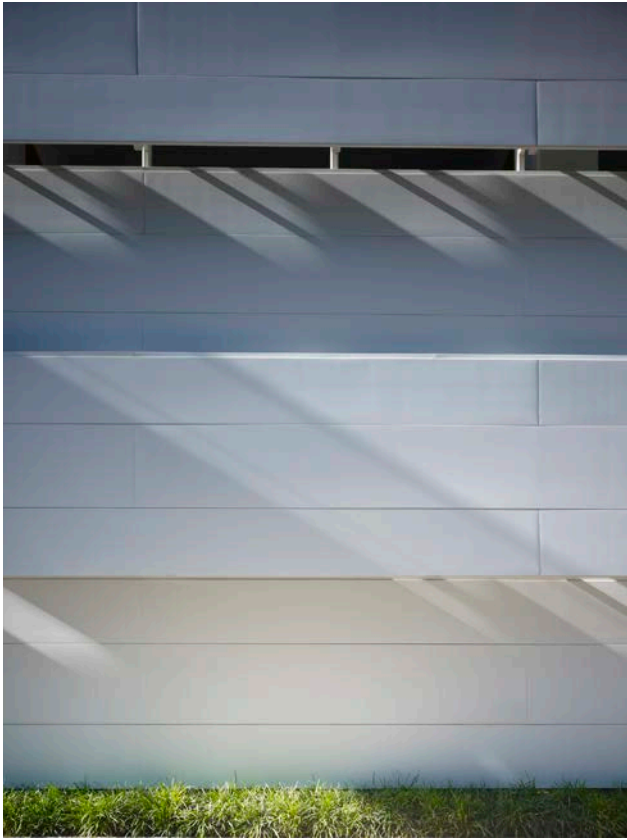


3rd level parking at southeast stair.



4th level parking looking west

C A R P A R K O N E A T C H E S A P E A K E



Stair detail at Car Park One..



South elevation detail from interior of Car Park One.



South elevation detail from interior of Car Park One.



East elevation detail from interior of Car Park One.

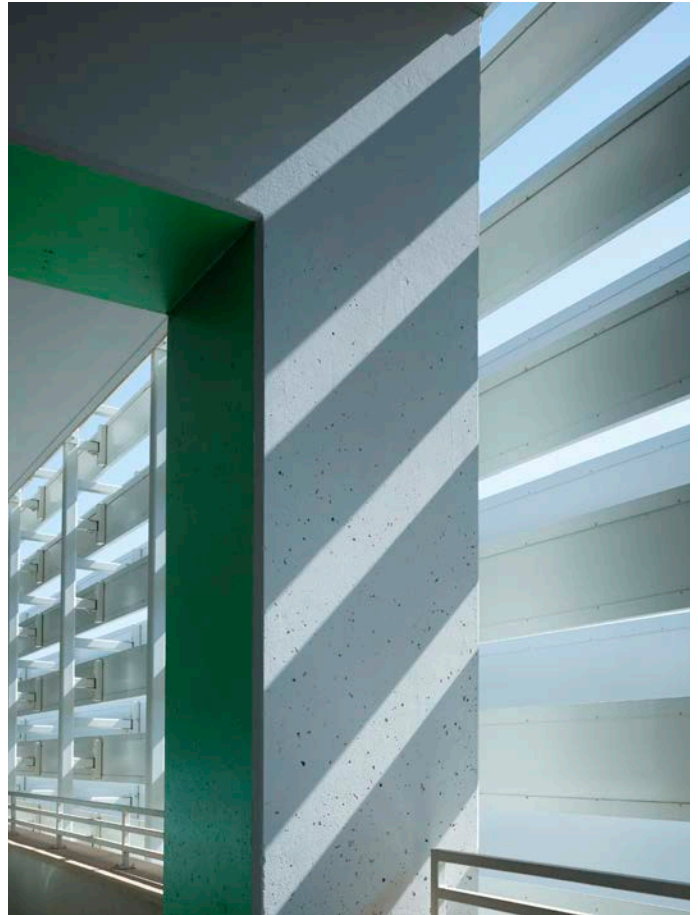


East elevation detail from interior of Car Park One.

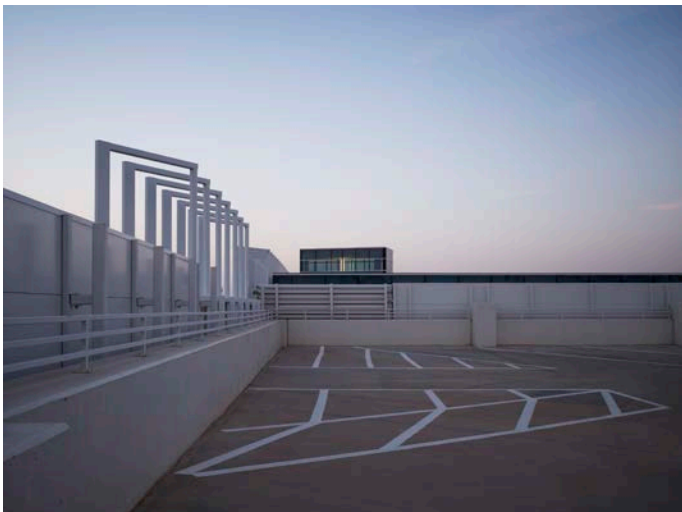
C A R P A R K O N E A T C H E S A P E A K E



East elevation detail from interior of Car Park One.



Detail of east elevation of Car Park One.



Roof parking deck view looking north at northwest corner.



Roof deck elevator lobby at west elevation.