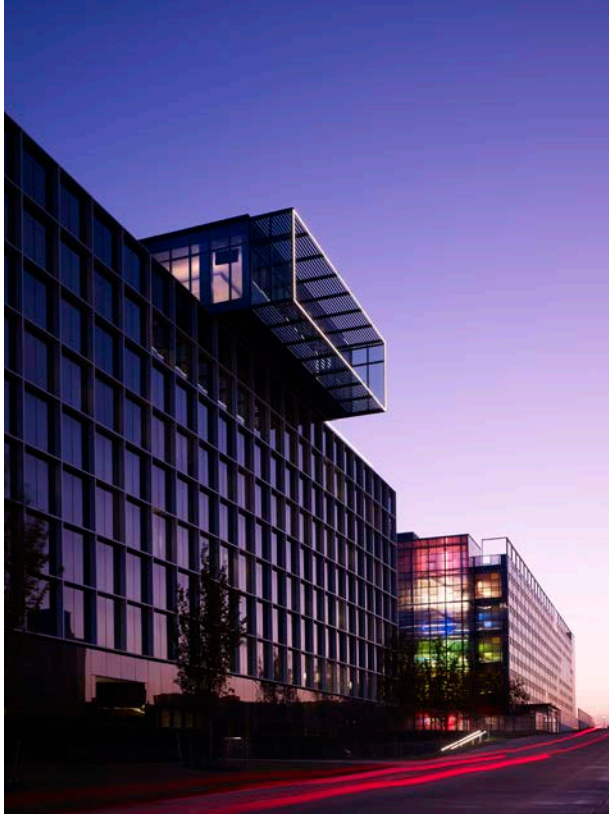


C H E S A P E A K E S K Y L I N E R E S T A U R A N T



The south elevation of Chesapeake Building 14 with the 6th floor Skyline Restaurant cantilevered over the edge. The form frames the downtown view. The lattice creates sun shading. An LED light line defines the architectural form and provides intrigue from afar.



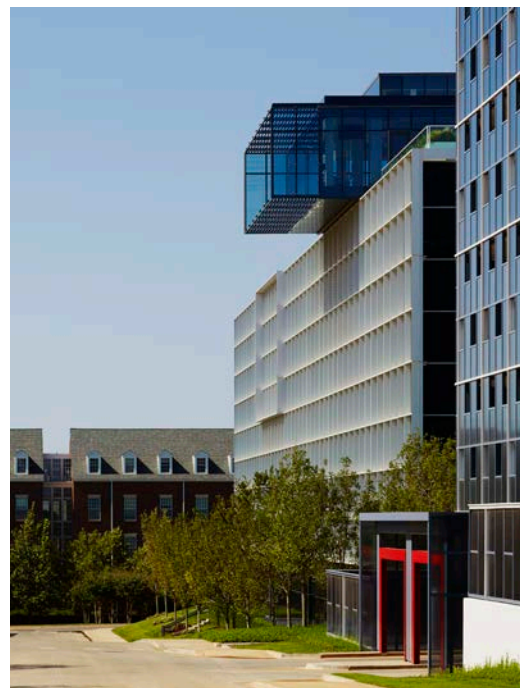
Client: Chesapeake Energy Corporation
Completion: March 2013
Scope: 14,160 sq.ft.; 2,080 sq.ft. roof deck
Cost: Withheld per Owner's Request
Awards: 2014 American Architecture Award, Chicago Athenaeum

Project Goals:

A 6th floor/rooftop restaurant with 300° exposure to seat 256 with outdoor deck and great views of the Campus and Downtown. The rooftop concept adds another restaurant option for the campus population.

Concept Points:

- This is the **first** rooftop restaurant on campus.
- It will be a **new experience** with views **90'** above the street.
- There is seating for **256** including **54** on the **East Roof deck**.
- Inspiration
 1. The panoramic **views**...you can see 25 miles in all directions.
 2. The transparency lets the sky come **into** the space...
 3. Imagine a restaurant in a **cloud**.
 4. Imagine a personal **rainbow**.
 5. Imagine dining while cantilevered over the edge of the building...lunch while floating.
- Welcome to the newest Chesapeake Restaurant...
Skyline



C H E S A P E A K E S K Y L I N E R E S T A U R A N T



A view showing the northeast elevation and the 6th floor frame extension. The LED light line is visible on both ends of the restaurant form.



A view looking southeast showing the north end of the Skyline Restaurant from the Parking Structure 1 on the north. Parking Structure 3 is beyond and on the left.

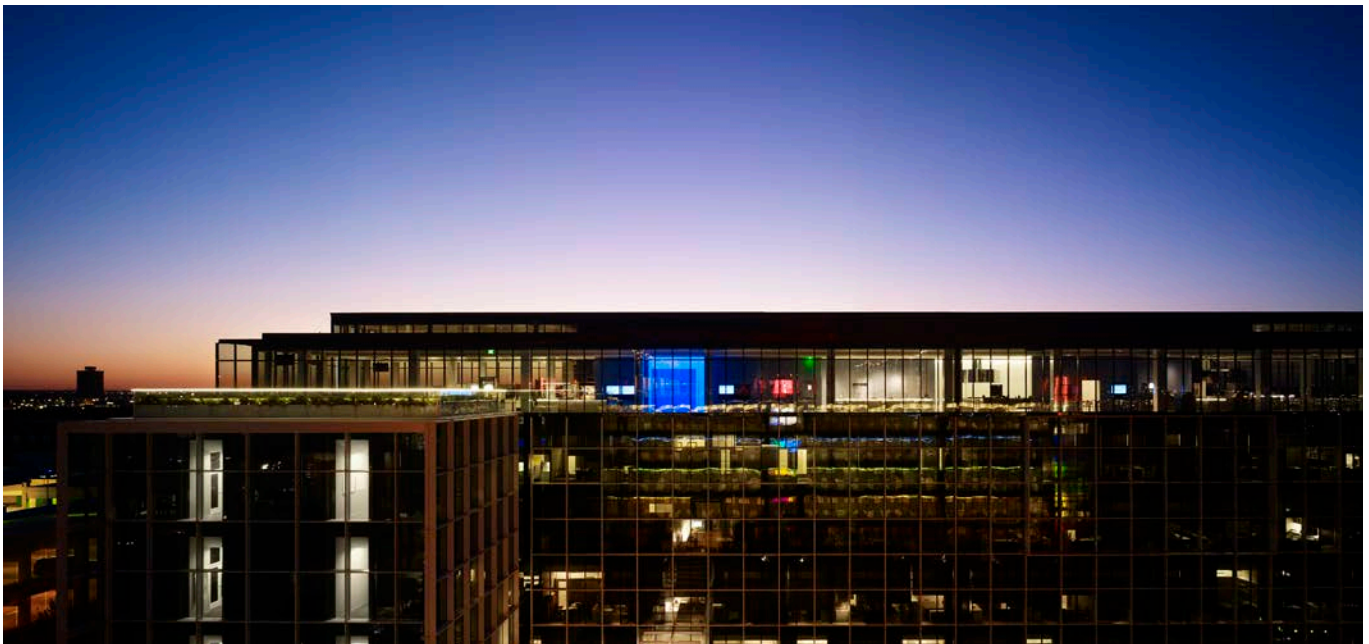


The north elevation of the 6th floor restaurant with the signature LED light line.

C H E S A P E A K E S K Y L I N E R E S T A U R A N T



Sunrise on the Skyline roof deck. The square pattern of the LED lights connects to the design construction **grid** of the entire building.



A view from the east looking west from the rooftop of Parking Structure 3 looking into the 6th floor restaurant. The rooftop dining is on the left. The blue volume is the main elevator entrance. Sunrises and sunsets are amazing from this location.

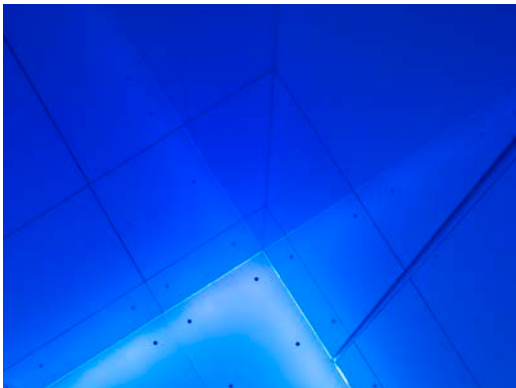


A detail of the rooftop dining deck complete with planters, embedded LED lighting and granite pavers. The horizon is visible 300°.



The lobby entrance looking east with a Skyline greeting.

C H E S A P E A K E S K Y L I N E R E S T A U R A N T



A detail of the glowing blue light and the reflective surfaces. The elevator lobby puts you in the sky.



The main elevator lobby with a sunrise overlay.

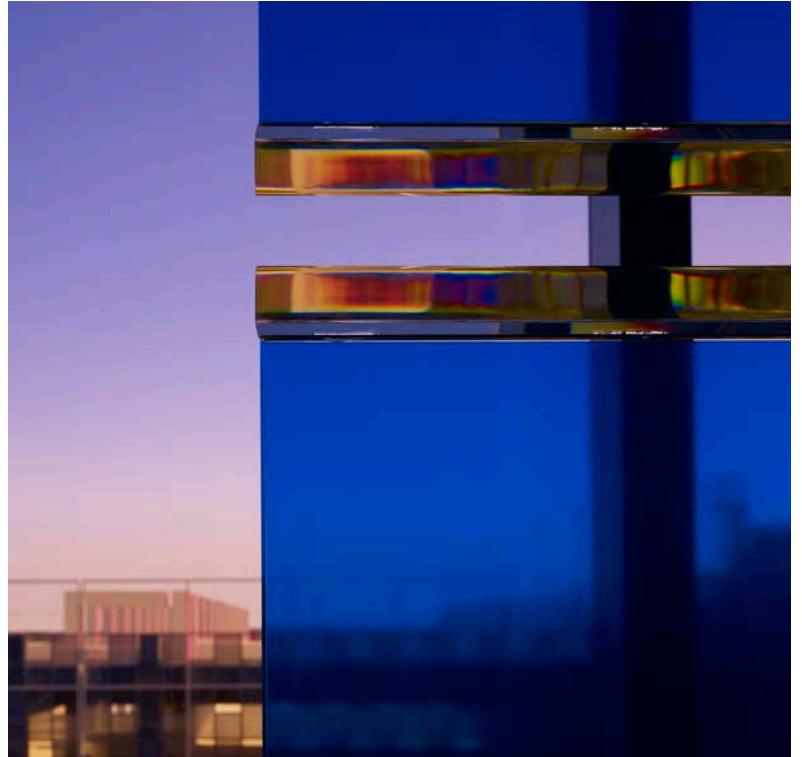


The sunrise light fills the room.

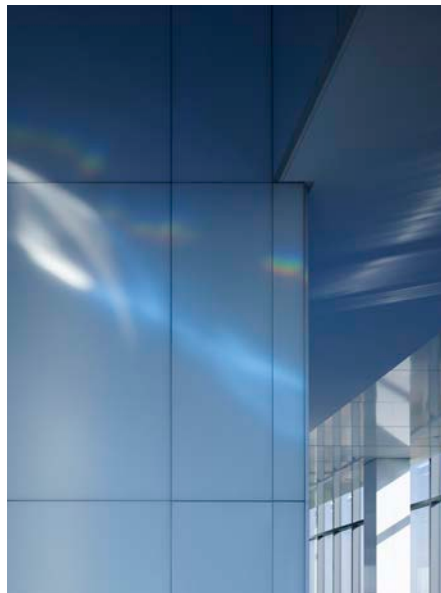


A sunrise greeting on your way to breakfast at Skyline Restaurant.

C H E S A P E A K E S K Y L I N E R E S T A U R A N T



The sign detail includes an open slit edged with prisms. The early morning sun creates magical light patterns.



The prism reflection on the ceiling from early morning light. A personal rainbow enters the room.

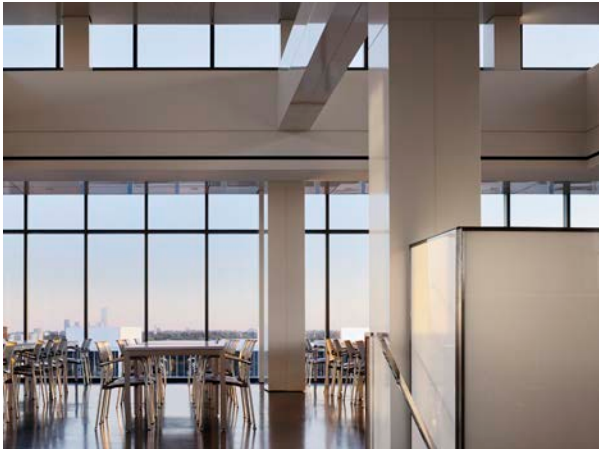


Early morning shadow patterns move through the space boldly and quietly.

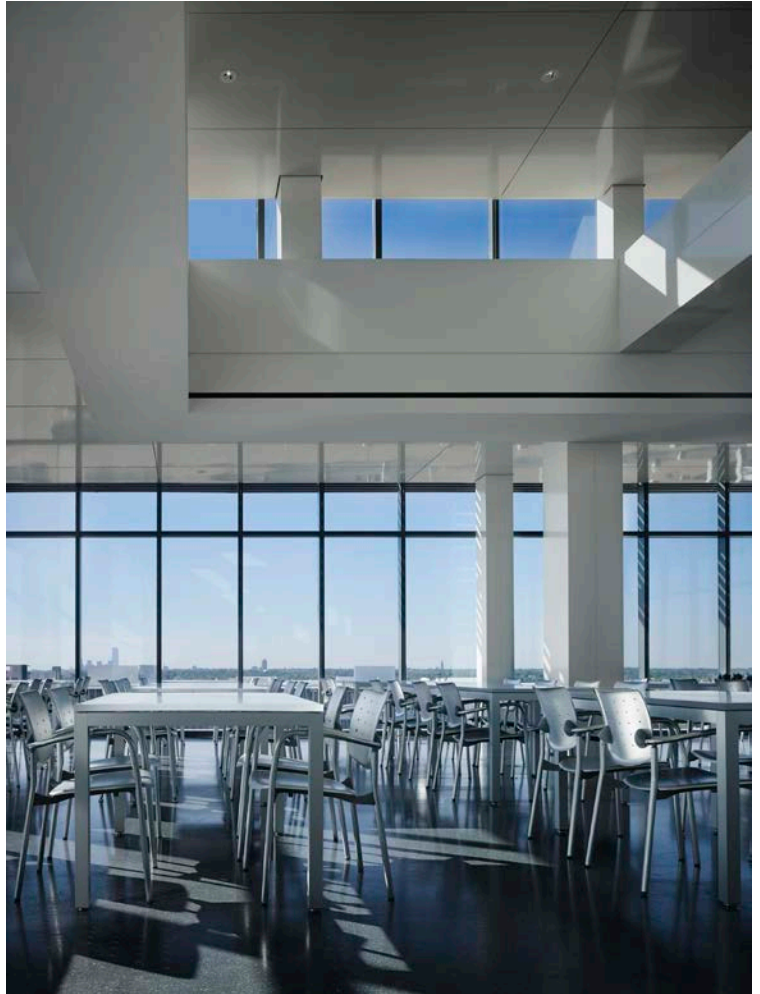
C H E S A P E A K E S K Y L I N E R E S T A U R A N T



The south dining area is raised providing an amazing view to downtown. 260° views and clerestory glass reinforce the idea of being in the clouds.



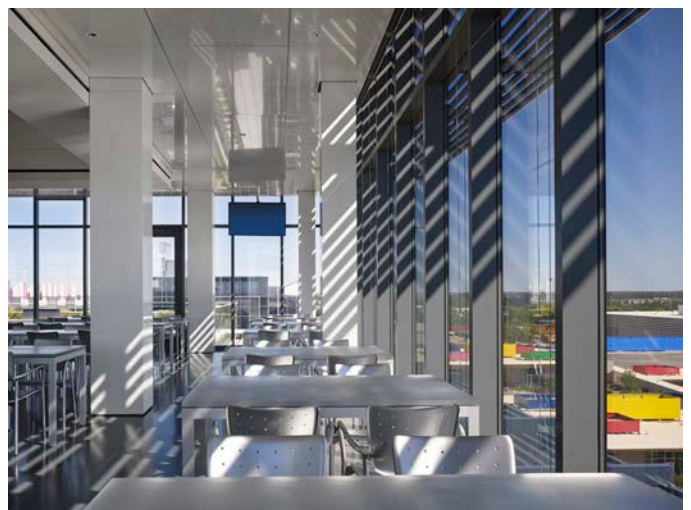
The south dining room and the view to downtown and the reflective white glass finish brings the sky **inside** the room.



The south dining room cantilever lets you float 90' above the ground. The lattice provides sun shading and a 300° view of the horizon connects you to the city.

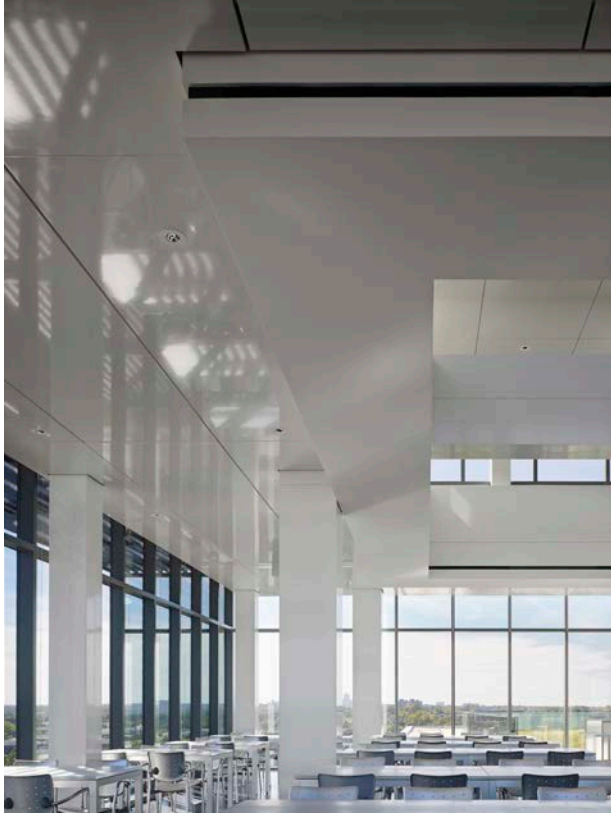


The south dining room cantilever lets you float 90' above the ground. The lattice provides sun shading and a 300° view of the horizon connects you to the city.

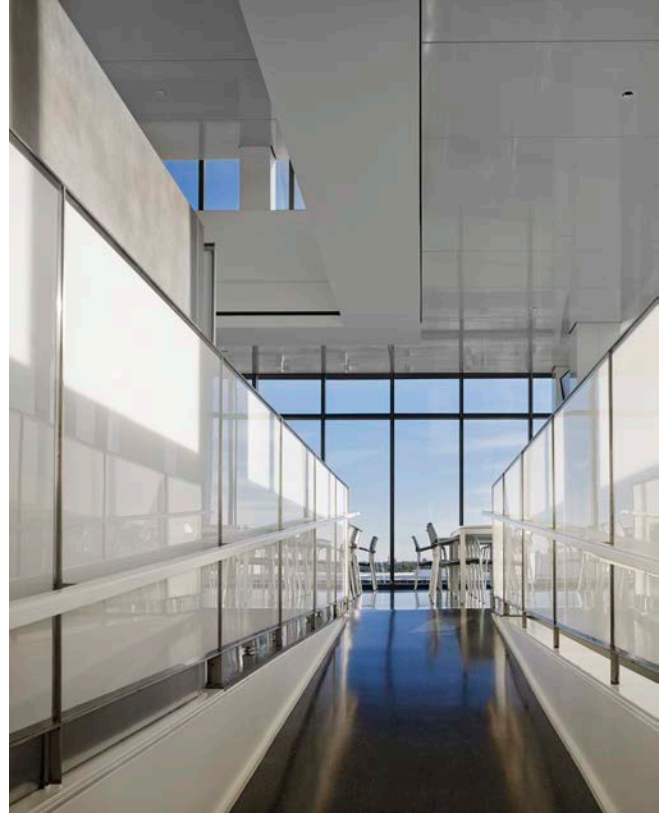


The south dining room cantilever lets you float 90' above the ground. The lattice provides sun shading and a 300° view of the horizon connects you to the city. The aluminum seating and translucent 3form tabletops capture the light in the space.

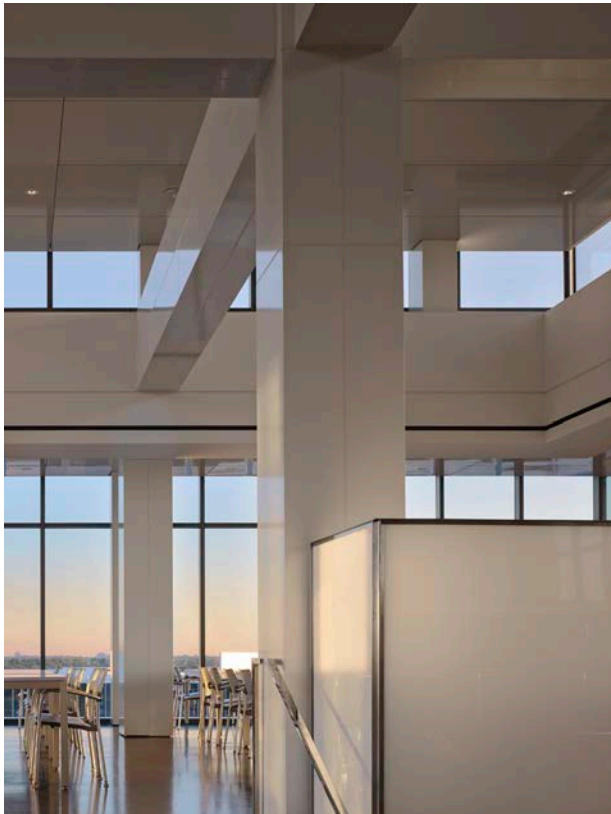
C H E S A P E A K E S K Y L I N E R E S T A U R A N T



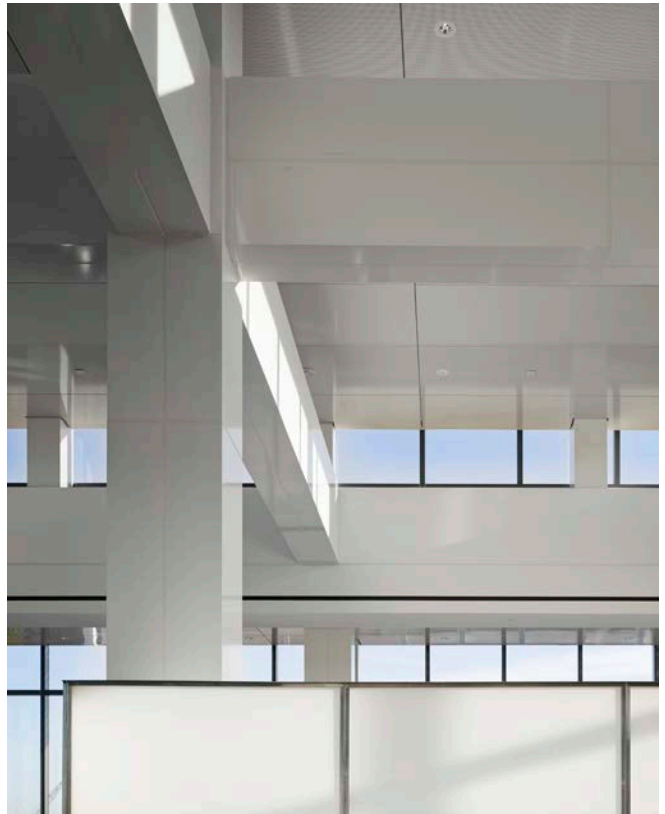
The south dining room is filled with reflections, refractions and sun shadows.



A translucent glass handrail makes the ramp access to the south dining room energizing.



The structural framework clad in white glass reflects strength and grace.

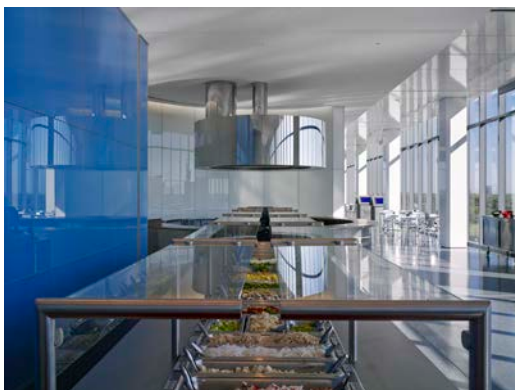


The structural framework clad in white glass reflects strength and grace.

C H E S A P E A K E S K Y L I N E R E S T A U R A N T



The entry lobby is on the left and the greeting sign is on the right. The 300' long dining gallery is filled with early morning sun. The changing shadows and shapes make the space an ever-changing experience.



There are three food preparation areas within the restaurant. The center food service area is Mongolian BBQ. The exhaust fan becomes a mirrored sculpture.

C H E S A P E A K E S K Y L I N E R E S T A U R A N T



The north dining space is the Sushi Bar. The stainless steel bar, terrazzo floors and white glass cladding create a crisp, fresh atmosphere.



The north dining space is the Sushi Bar. The stainless steel bar, terrazzo floors and white glass cladding create a crisp, fresh atmosphere. The exposed framework on the right is the LED light line visible only from afar not from inside the restaurant.



A view of the Sushi Bar looking south. The polished stainless exhaust fan provides a sculptural centerpiece.



A detail view of the aluminum seating and the translucent 3form countertop.