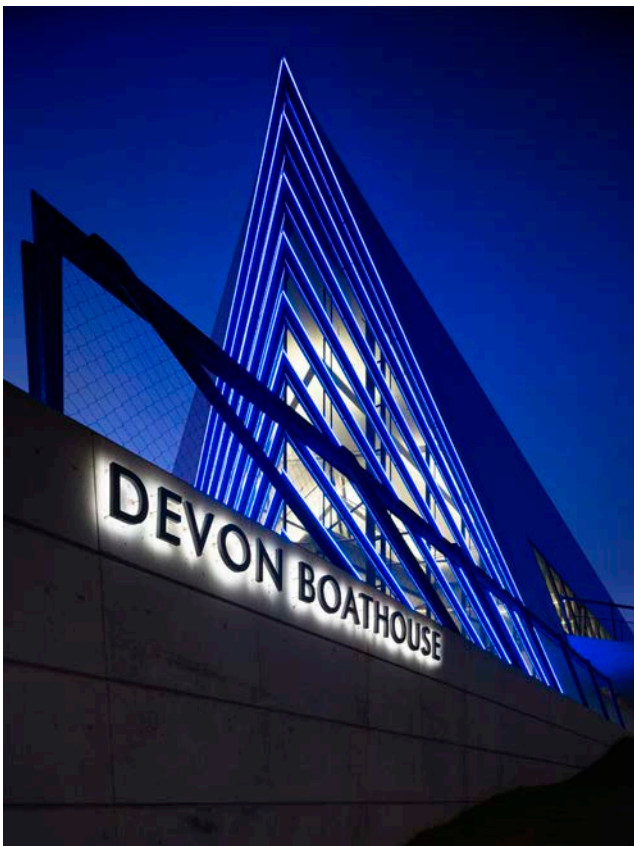


D E V O N B O A T H O U S E



South elevation, west corner showing west porch roof



West elevation

Client: Oklahoma City University
Completion: October 2010
Scope: 33,000 s.f.
Cost: Not for Publication
Awards: 2015 International Architecture Award, Chicago Athenaeum; 2013 Merit Award, AIA Oklahoma; 2013 American Architecture Award, Chicago Athenaeum; 2012 Merit Award, AIA, Central Oklahoma Chapter

Description:

The 33,000 s.f. Devon Boathouse is located on the Oklahoma River, as the anchor point for the Boathouse District. The Boathouse includes reception, event spaces, catering facilities, high performance fitness center, propulsion rowing tank, endless pool, high altitude training room, weight room and locker rooms as well as boat storage and repair area.

Meeting and event spaces at the new boathouse are open to the public. The Devon Boathouse features two levels of event space including a second floor viewing room.

The boathouse is home to OCU's rowing and canoe/kayak teams and OKC National High Performance Center programs through US Rowing and US Canoe/Kayak. The Devon Boathouse is a designated Olympic Training Site.

First Floor Plan	Second Floor Plan
Boat storage	Viewing Room
Training	Balcony
Rowing tank	Training
Event room	Lockers
Kitchen, storage	Offices
Tool, mechanical, toilets	Lobby/Gallery



West elevation

D E V O N B O A T H O U S E



South building corner overlooking the Oklahoma River



North elevation with Chesapeake Finish Line Tower in the background. The mechanical enclosure is on the right.



View looking Southwest showing east balcony



Sunrise view looking south with east elevation and balcony

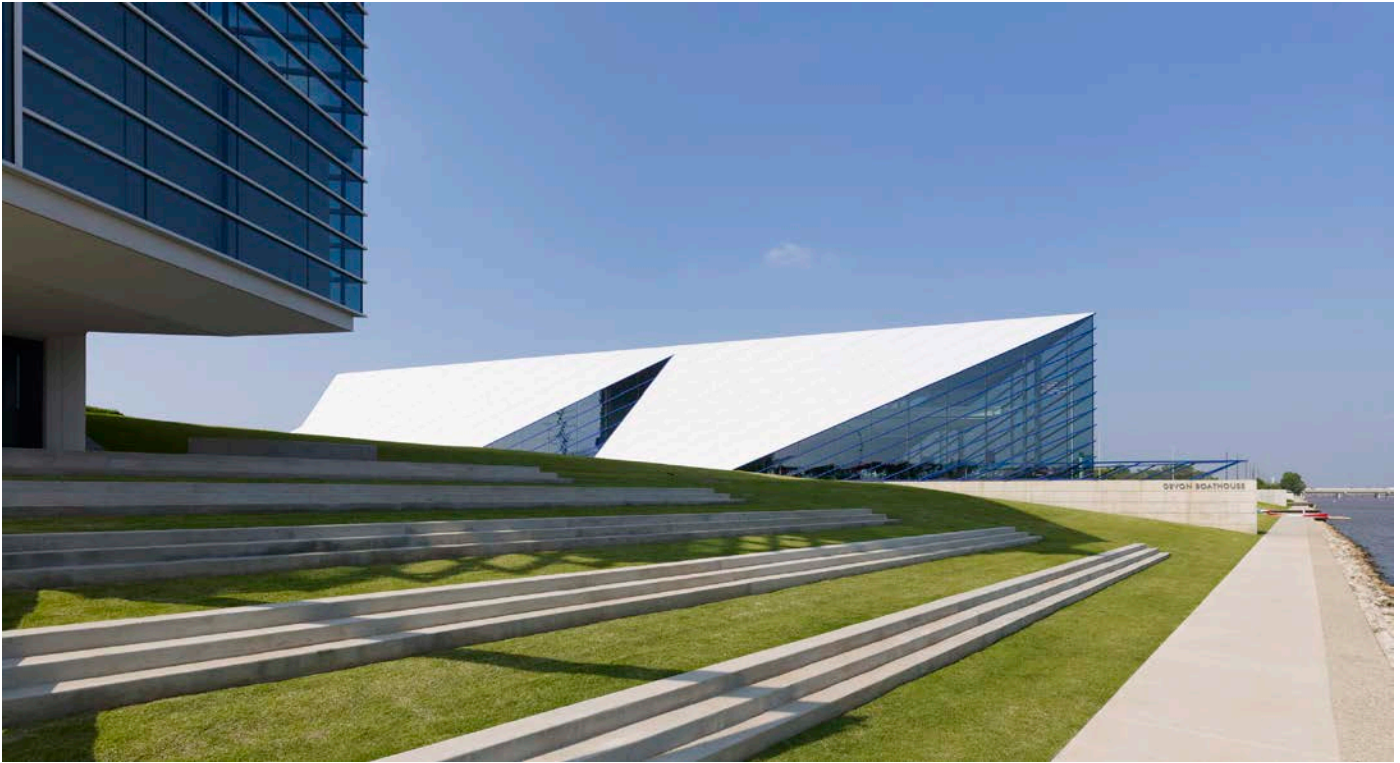


East elevation with boat ramp in the foreground



Northwest corner of the building at main entry

D E V O N B O A T H O U S E



West elevation



Partial west elevation and roof. Notice there are no exposed mechanical devices on the roof



Partial west elevation and roof. Notice there are no exposed mechanical devices on the roof

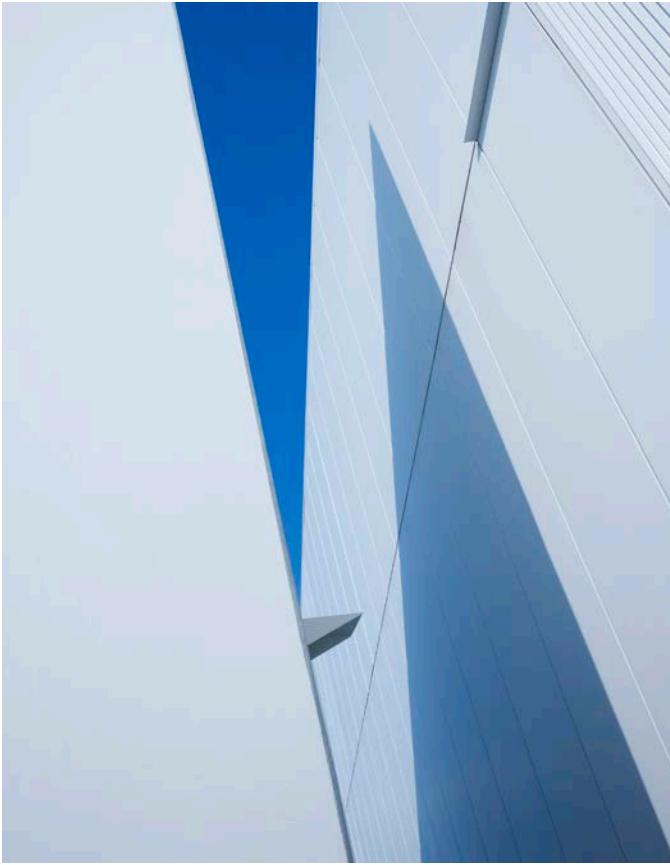


Northeast corner detail

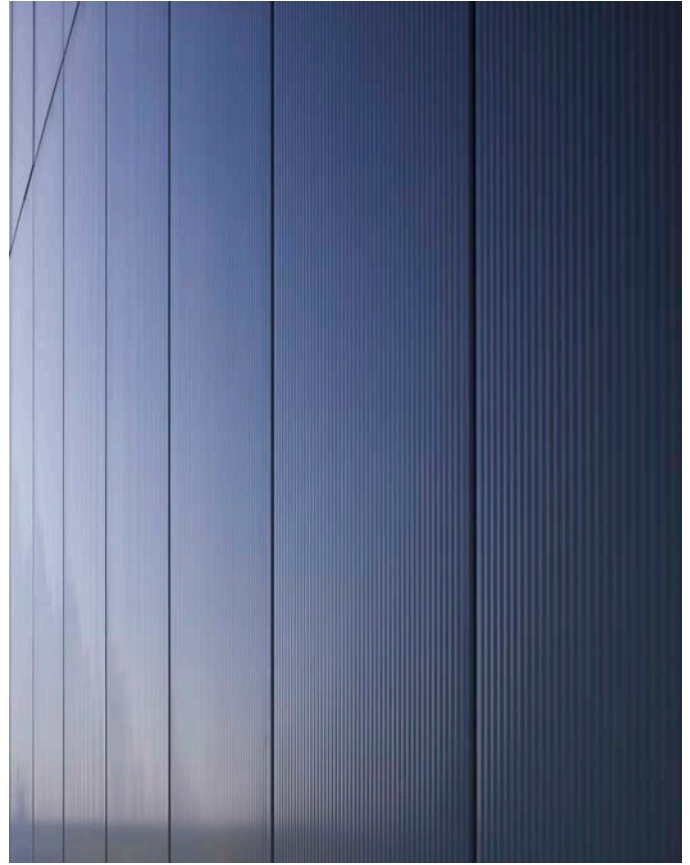


Northeast corner detail

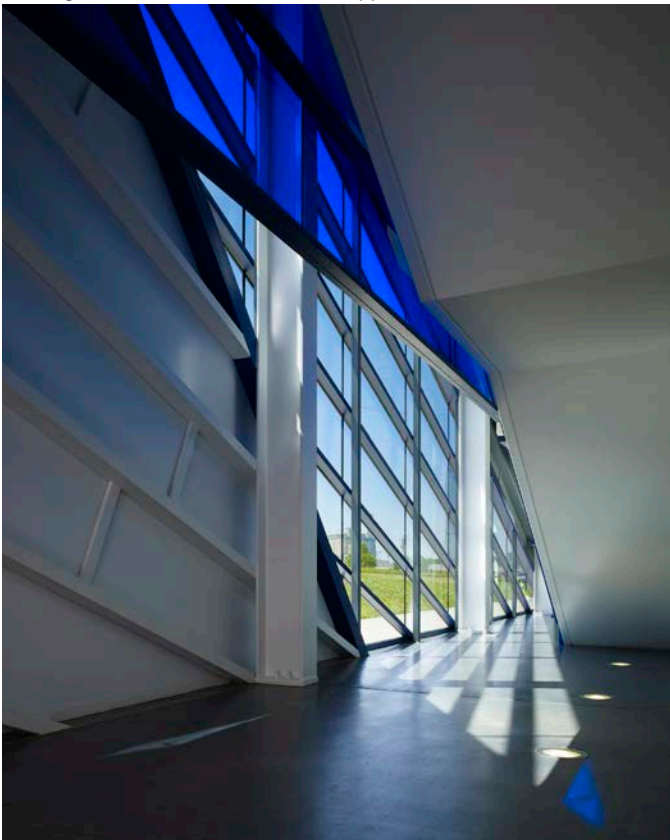
D E V O N B O A T H O U S E



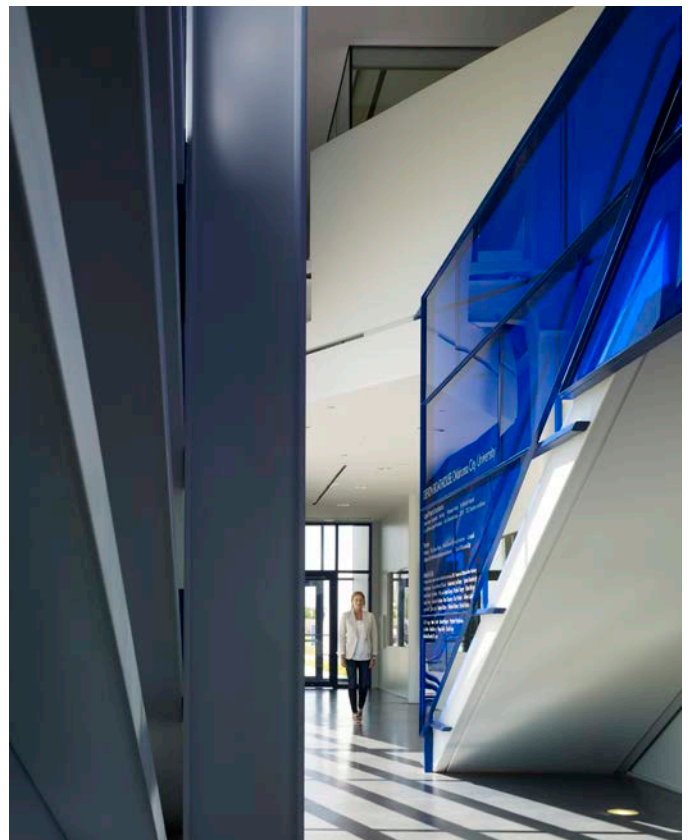
Detail of separation space between mechanical enclosure and north building elevation. Notice exhaust scupper detail



Metal panel detail



Main entry lobby looking northwest from under stair

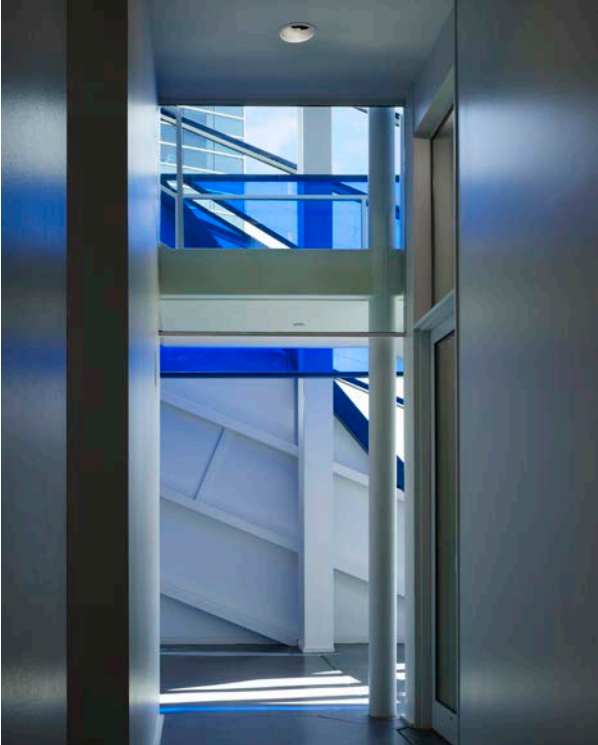


Main entry lobby and donors on stair panel

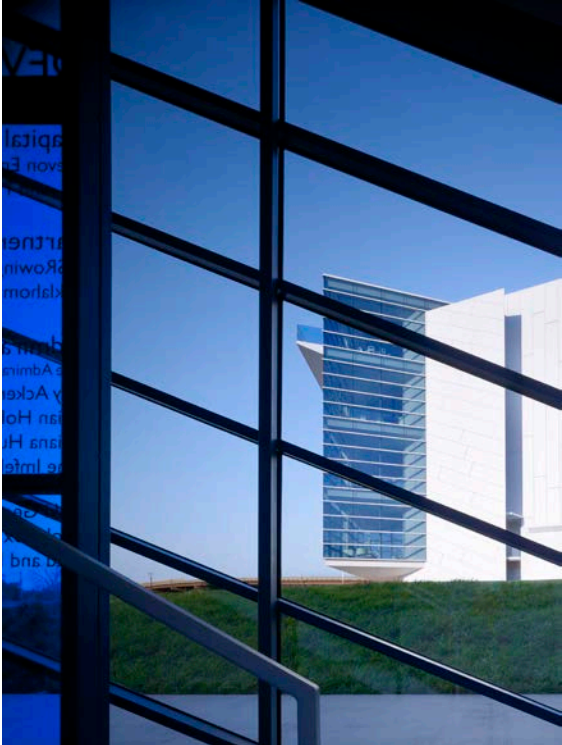
D E V O N B O A T H O U S E



Stair panel detail



View from corridor towards main lobby



View through west window towards Finish Line Tower

D E V O N B O A T H O U S E



1st floor event room looking south toward river



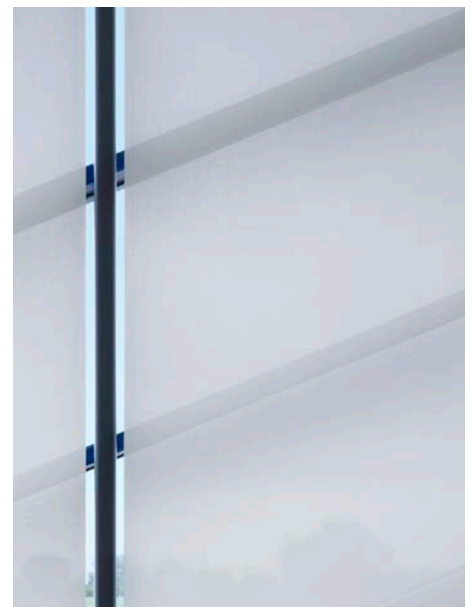
1st floor event room with bar and view into boat storage



Detail at 1st floor event room



1st floor event room looking south toward river



West curtainwall/shade detail

D E V O N B O A T H O U S E



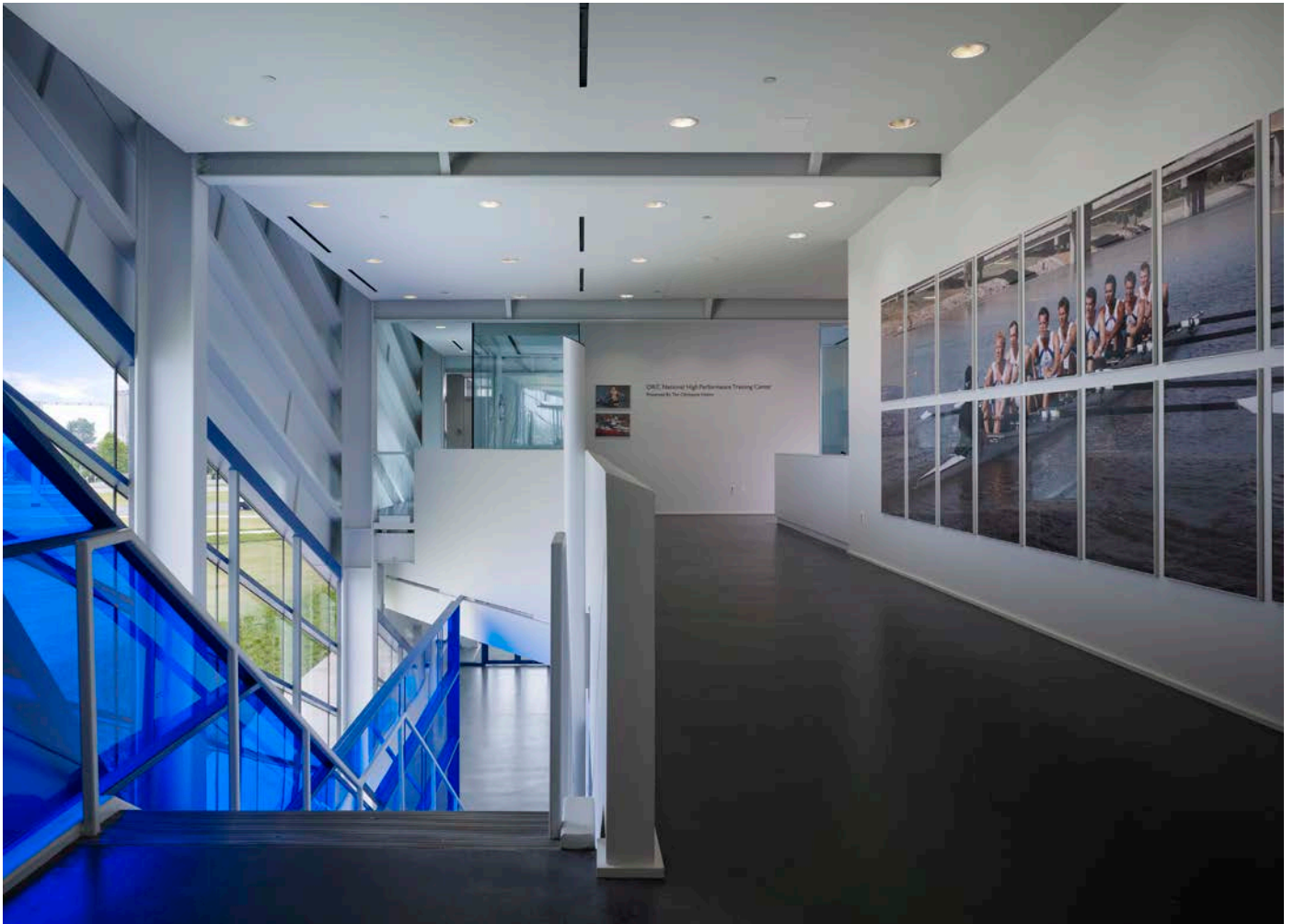
Main lobby stair with donors' panel



Main entry lobby stair-descending



Main lobby stair 2nd floor arrival. Notice building wall structure and skin.



2nd floor landing and lobby

D E V O N B O A T H O U S E



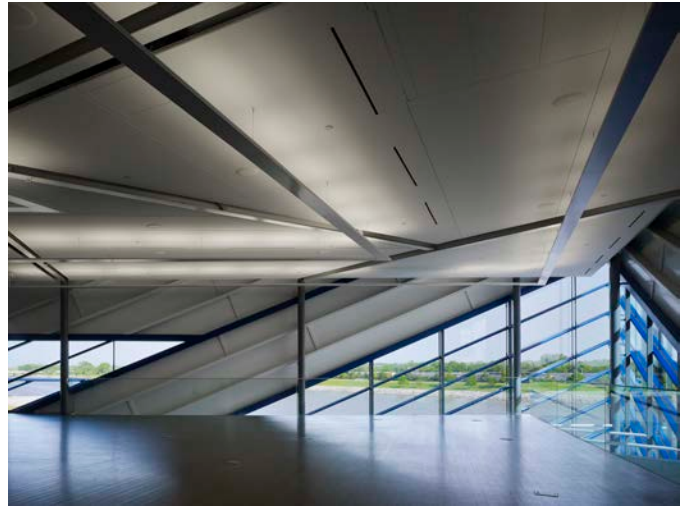
2nd floor viewing room looking south toward river



2nd floor viewing room looking south toward river



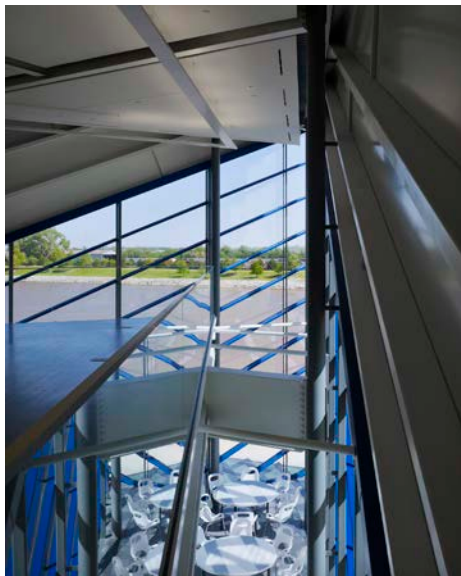
2nd floor viewing room looking south toward river



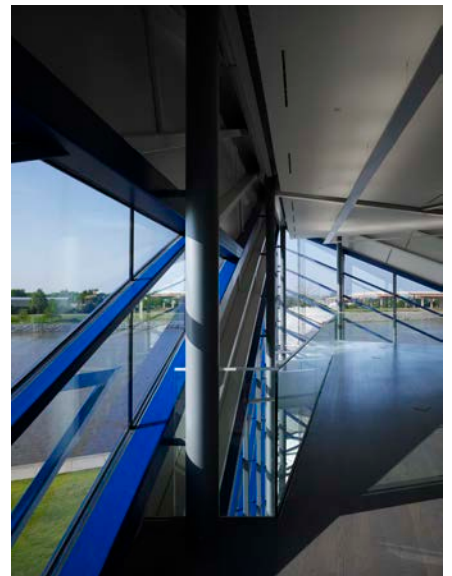
2nd floor viewing room looking south toward river



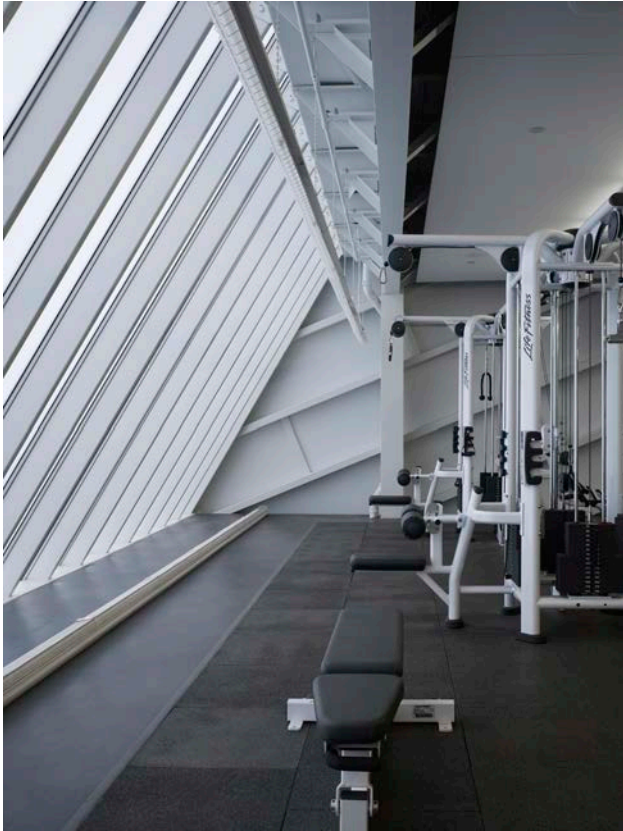
Main lobby stair with donors' panel



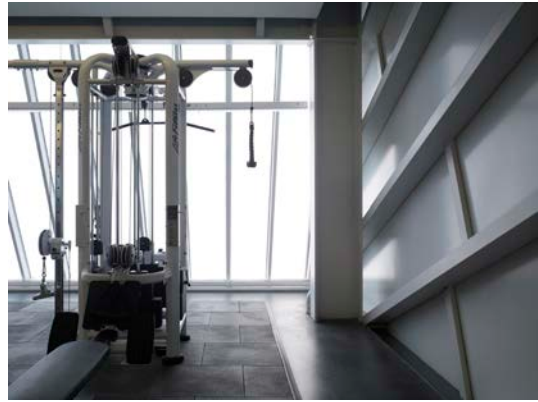
Main entry lobby stair-descending



Main lobby stair 2nd floor arrival. Notice building wall structure and skin.



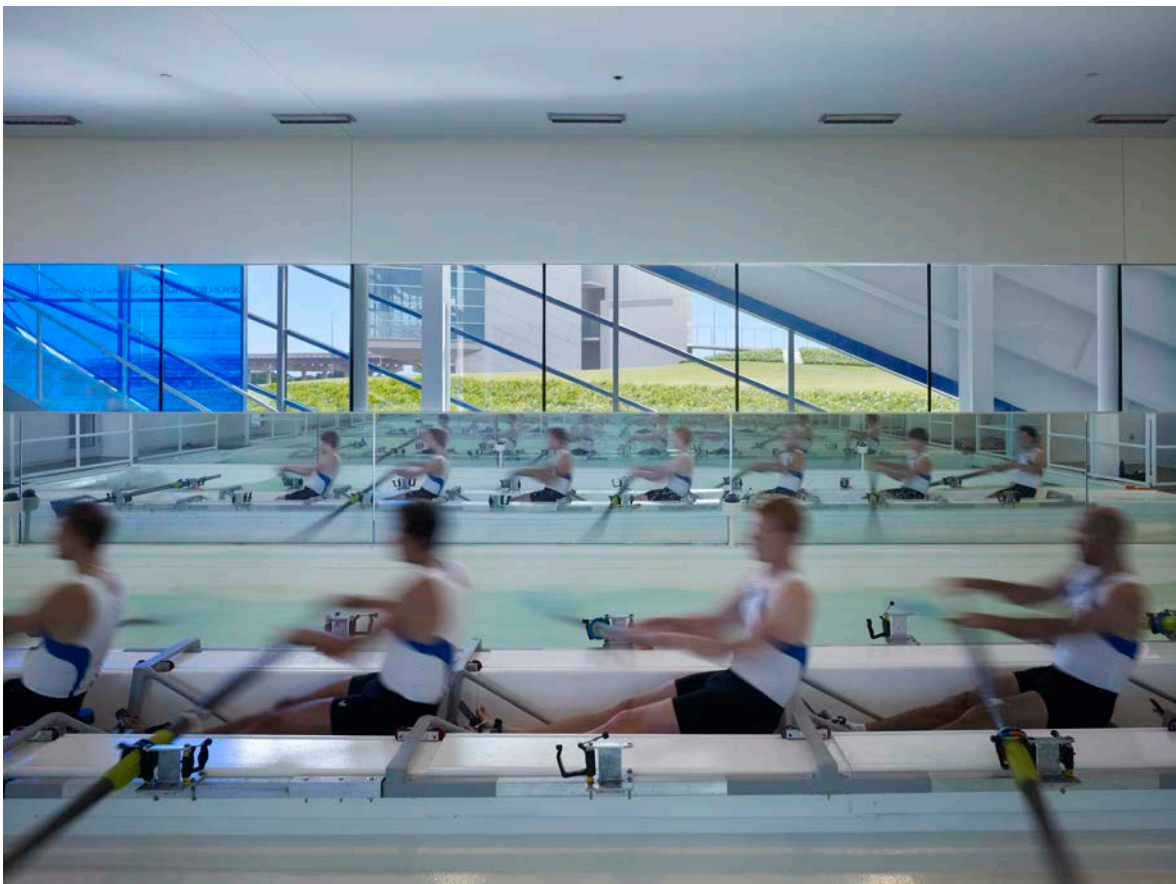
2nd floor weight training with north polycarbonate wall



2nd floor weight training with north polycarbonate wall



2nd floor weight training with north polycarbonate wall

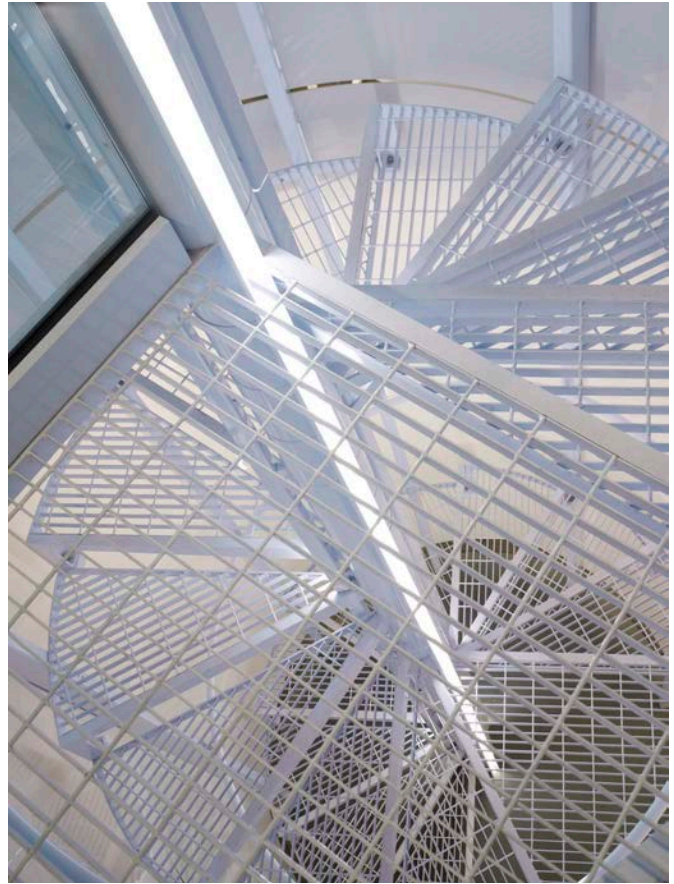


Dynamic propulsion rowing tank looking west toward Finish Line Tower

D E V O N B O A T H O U S E



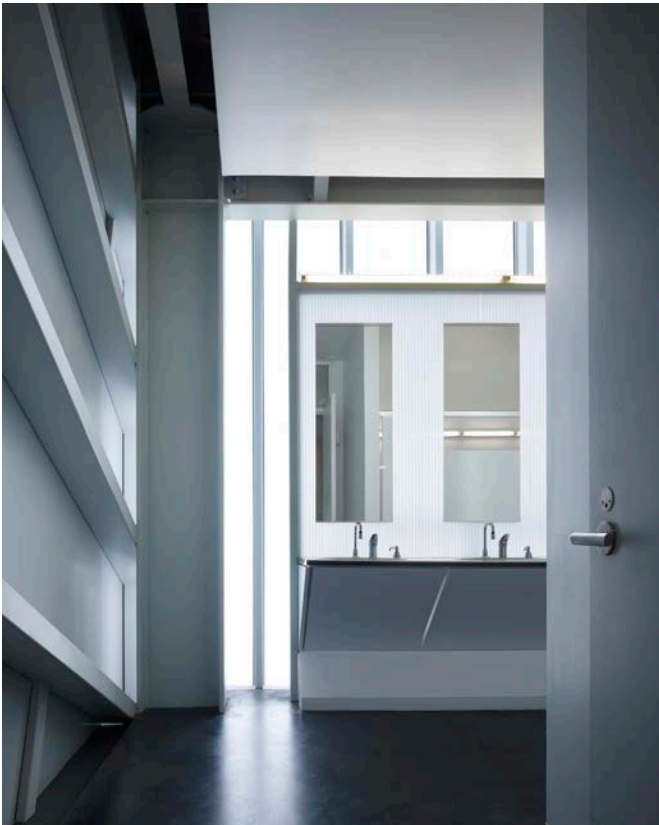
2nd floor endless pool



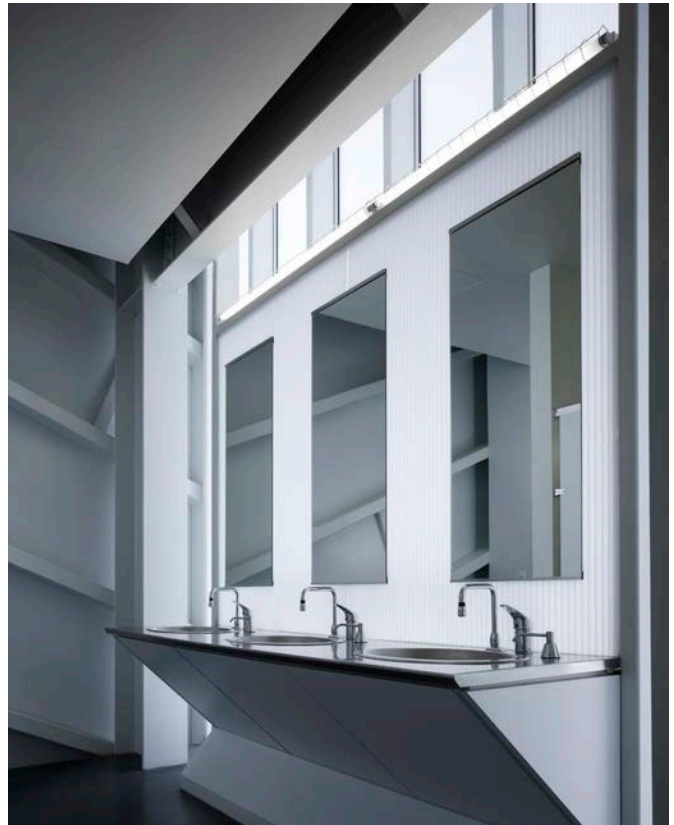
Spiral stair that connects 1st floor free weight area to 2nd level training area



1st floor free weight area with dynamic propulsion tank left and stair to 2nd level training area



Women's locker toilet room with polycarbonate north wall



Women's locker toilet room with polycarbonate north wall

D E V O N B O A T H O U S E



Two-story boat storage area with balcony and training overlook



Boat storage area with polycarbonate wall and access door



Two-story boat storage area with 2nd floor viewing room balcony overlook



Boat storage area with polycarbonate wall and access door



Rowing shell view from 2nd floor viewing room balcony

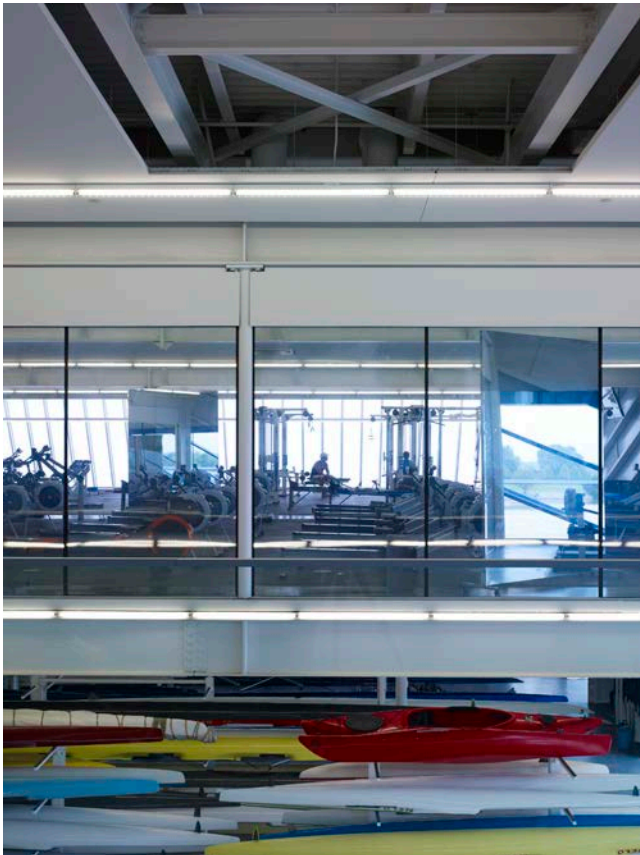
D E V O N B O A T H O U S E



Rowing shell storage/rack detail with Olympic winning boat (red)



Oar detail in boat storage along ramp/door access



View from 2nd floor viewing room across two-story boat storage to training area



View from 2nd floor viewing room across two-story boat storage to training area



View from 2nd floor office area with training area left, boat storage below and viewing/balcony room right. Ramp/river is visible through doors and window.