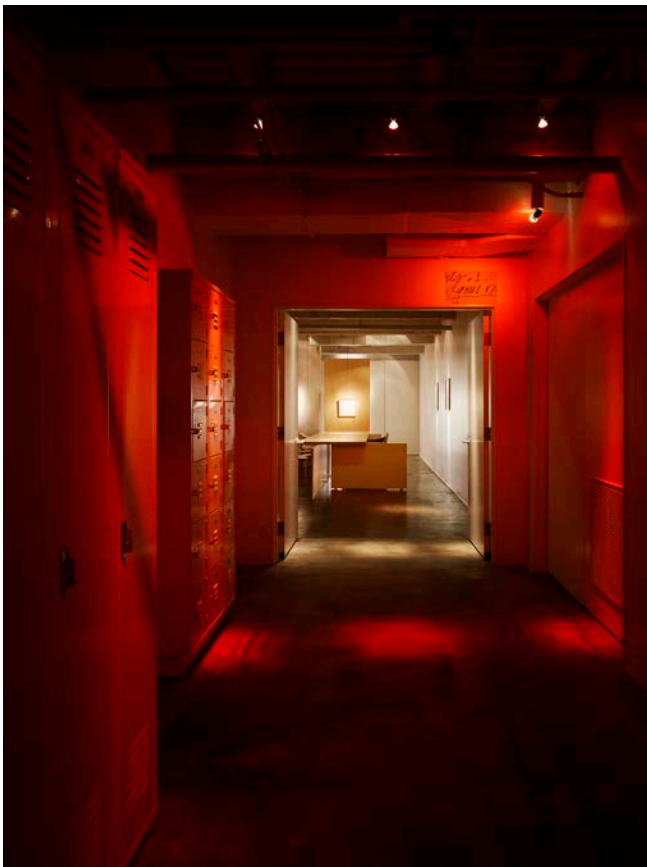




The alley entry serves as the primary delivery access for RED Prime Steak Restaurant. It is also the Ghost Gallery entrance. For events, a 100' red carpet rolls out from the alley to the gallery. A red polycarbonate box encloses the used cooking oil container.



The gallery entrance sequence passes by restaurant staff lockers, prep kitchen and storage room doors. The main gallery entry has a new sign for each event. Think of the entry as the "kitchen door."

**Client:** Historic Buick LLC  
**Completion:** May 2014  
**Scope:** 1,060 SF  
**Cost:** \$208,300.00  
**Awards:** 2015 World Interiors News, Short-Listed Project; 2014 Interior Design, "Best of Year" Finalist

**Building History:**

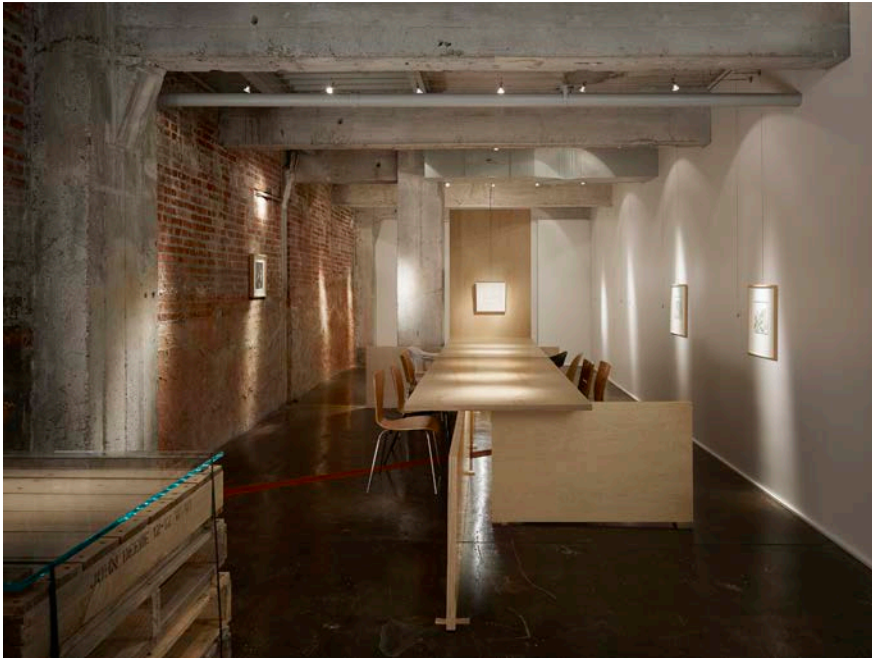
Constructed in 1911, the Buick Building was the first automobile showroom in Oklahoma City and began what is now known as Automobile Alley. Unlike most modern sales dealerships, this was a direct sales outlet built and owned by the Buick Motor Company of Detroit. With its limestone ornamentation and embossed name, the two-story structure was well suited to the early automobile industry. During the early decades of the twentieth century dealerships did not maintain large inventories. Instead, potential buyers were shown a model or two in the ground floor showroom. If the customer wanted the model it was then ordered from the factory. Due to small inventories, large showrooms were not needed. Moreover, by not stocking cars for sale, open car lots were not necessary in sharp contrast to dealerships today. By the late 1920s, small dealerships such as Buick were changing. By 1930, the Buick Building was used as a paint store with the Buick dealership having moved to a larger building at N. W. 10th and Broadway.

The Buick Building is part of the historic downtown district known as "Automobile Alley." This area is a district building on its history as home to more than 50 car dealerships and their related services. Following the April 19, 1995 bombing of the Alfred P. Murrah Federal Building, the development of the Automobile Alley Main Street Program resulted in private investment in excess of \$30 million.

**Architectural Concept:**

The husband/wife owners had always imagined a private gallery in the basement of the Historic Buick Building. Originally used to service 1911 Buick automobiles, the basement is now the prep kitchen for Red Prime Steak (opened 2005), archival storage for a professional office, and Ghost Gallery. Ghost Gallery takes its name based on the idea of art appearing and disappearing without warning. Ghost Gallery now serves as an art space for exhibits, private dinners, and lectures on subjects of the owner's interest. Event one honored American artist Agnes Martin. Finding Clarity: Photographs by Judith Turner was Event Two. Each private dinner and lecture will host 9 friends for an evening of art, food, and discussion. Future events will include works by territorial photographer North Losey, prints and books by Le Corbusier, and works by Fred Sandback.

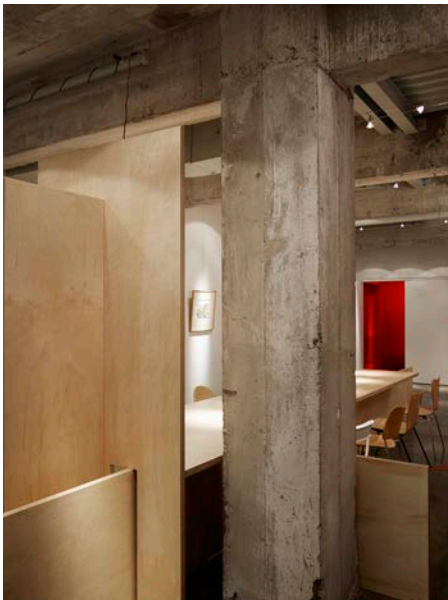
# G H O S T G A L L E R Y



Ghost Gallery seats a maximum of 10 surrounding a Baltic Birch slab table. The west end of the table is the focal point art for discussion. Notice the random seating, the hors d'oeuvre table made of used wood pallets, and the exposed exterior masonry wall. The 1911 concrete slab is uneven. We celebrate this historic detail with custom made wood shims.



The Gallery seats a maximum of 10 surrounding a Baltic Birch slab table. The west end of the table is the focal point art for discussion. Notice the random seating, hors d'oeuvre table made from used wood pallets, and the exposed exterior masonry wall.



A view looking east past a historic concrete column. The slab table shows respect for the historic building by passing by instead of engagement. The wood pallet hors d'oeuvre table is located near the entrance. A cable system allows artwork to be relocated without wall damage. The red lighted floor trench is historic and originally redirected a chronic basement leak to a floor drain. We installed a red LED light in the trench and covered it with perforated weathering brass for safety.



A view looking east towards the alley door entrance.





Museum quality environmental controls for the gallery and storage area allow unlimited exhibition opportunities. Gallery storage is part of an event tour and provides interesting dinner conversation. A wood and iron trolley was found in the historic building and now serves to move art around the space.



The art storage doors can be closed and covered with an opaque roller shade. An empty wall is the balance for art of the evening.



The lighting concept was designed for art exhibitions and is sometimes more beautiful when there is no art. To that point, we chose to light the imperfections of the space between dinner discussions. Think of Empty space as art.



Table detail looking west.



The Baltic Birch panels interlock effortlessly as vertical and horizontal planes become a table. Custom shims celebrate the uneven historic floor

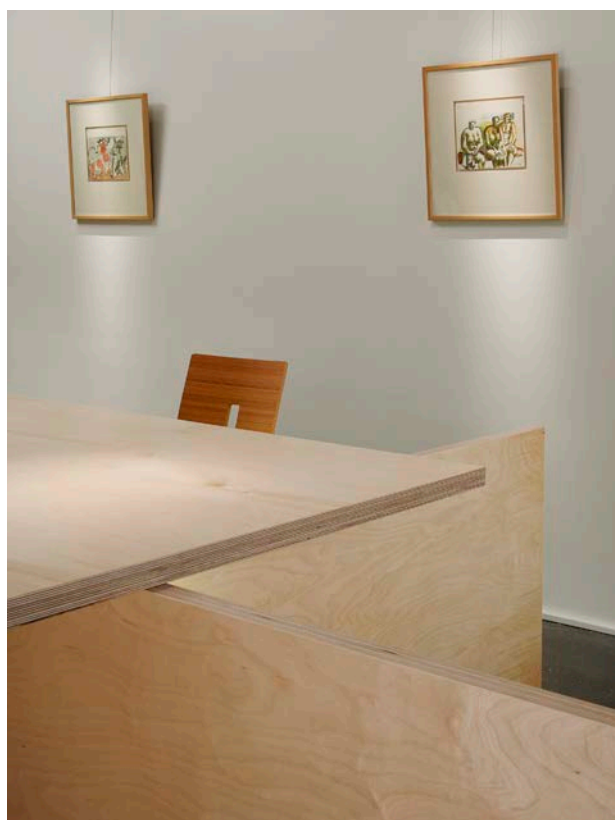


Table panel intersection.

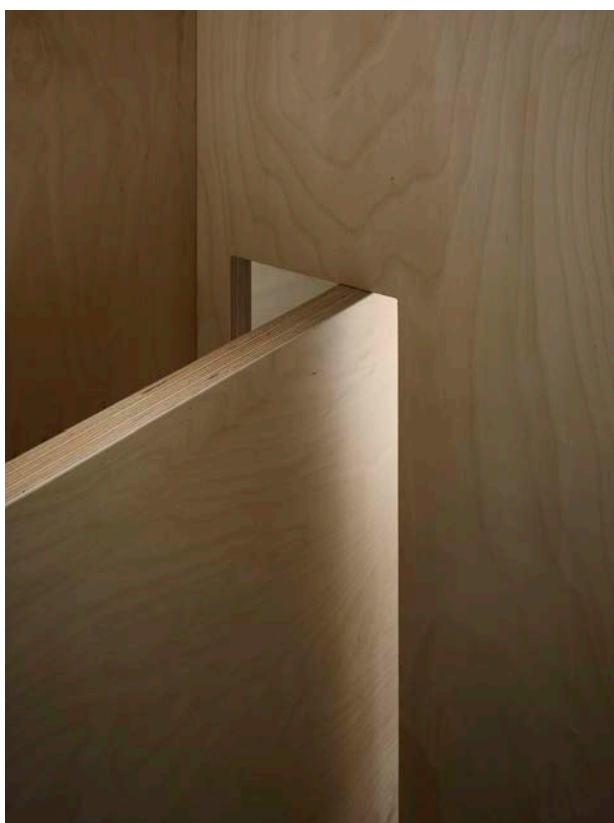
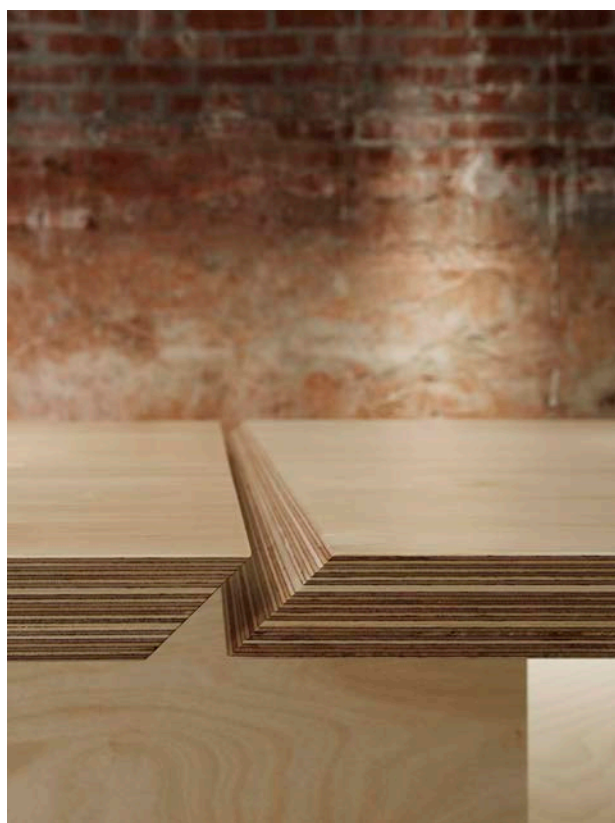


Table detail at west end showing vertical art panel and structural support slab.



The Baltic Birch slabs celebrate the construction joint.