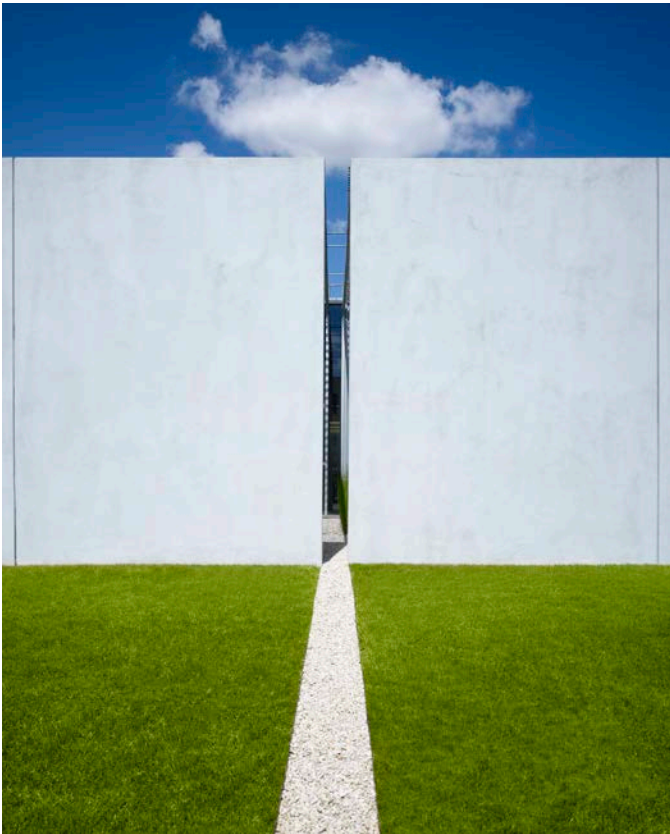


I M A G E N E T H O U S T O N



East elevation



East elevation looking through panel joint slit into entry courtyard



Entry view looking southwest

Client: ImageNet Office Systems, Houston
Completion: September 2007
Scope: 13,500 s.f.
Cost: \$1,876,378
Awards: Chicago Athenaeum, International Architecture Award; Texas Society of Architects Design Award; AIA, Central States Region, Merit Award; Association of General Contractors, Houston Chapter, Apex Award

Project Goals:

- This is our first ground-up project for you.
- We are looking for economy, relevance to your business, a memorable image/personality and expandability.
- Think of this as a low budget project.
- We have designed 3 projects for you to date with each in a different city. Each location has its unique characteristics. Oklahoma City is home, Tulsa has Art Deco, Washington D. C. has L'Enfant's plan and Houston has characteristics that we have studied and want to respond to.

Program Requirements:

- Equipment showroom
- 2 video conference rooms
- Sales area
- Management offices
- Secure inventory area
- Technical support area for machine repair
- Inventory warehouse with dock.
- Building expandability
- Incorporate the signature recycled "paperwall" into the project



East elevation and sign structure

I M A G E N E T H O U S T O N



Main entry looking south



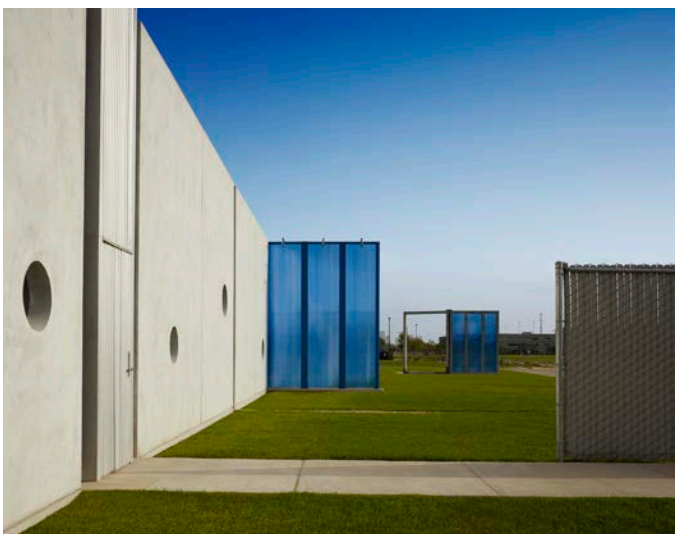
North elevation with Preamble to the Constitution



The Preamble to the Constitution is sand blasted onto the concrete panels as a duplicate, with the letters for "ImageNet" cast through the panel



West elevation



Service entrance on left with view to north

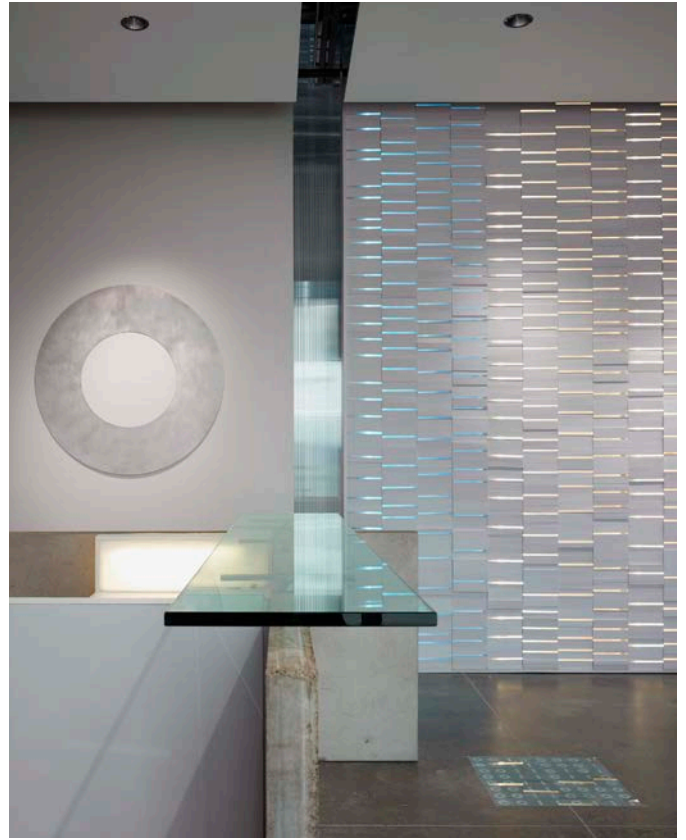


Receiving dock

I M A G E N E T H O U S T O N



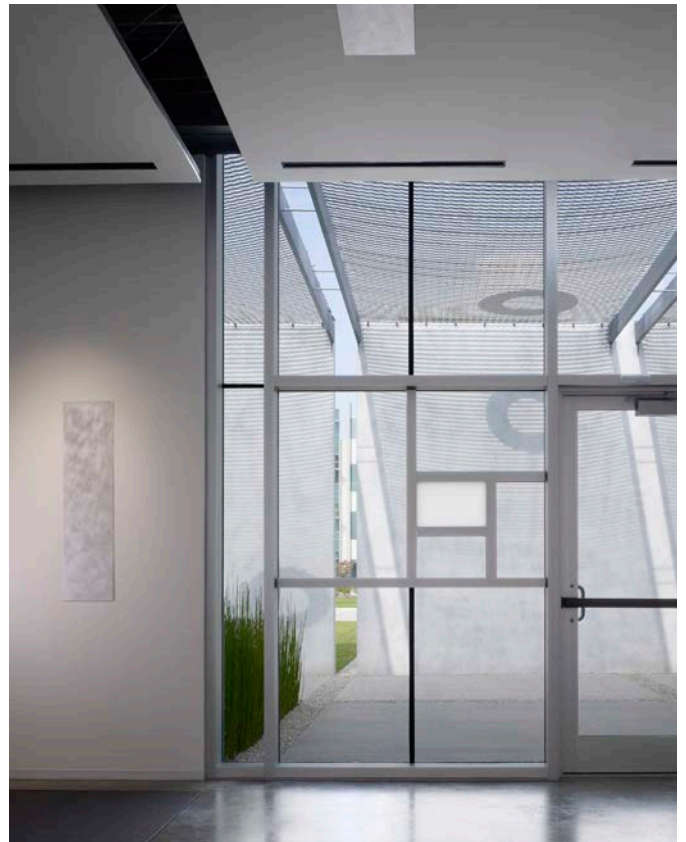
Entry courtyard with solar shade



Reception desk and recycled paper wall with clear plex illustrating 10% information loss



Reception desk looking south toward main conference room with recycled paper wall on right



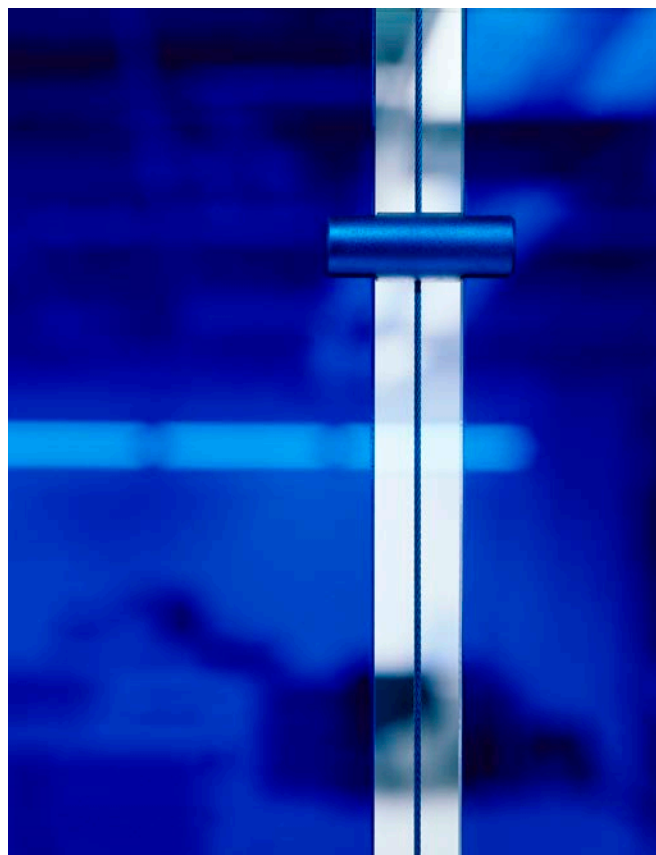
View from showroom main entry looking east into courtyard and 11x17 proportional panel



Corridor view through blue acrylic to production looking south



Circular windows into production manager's office looking south

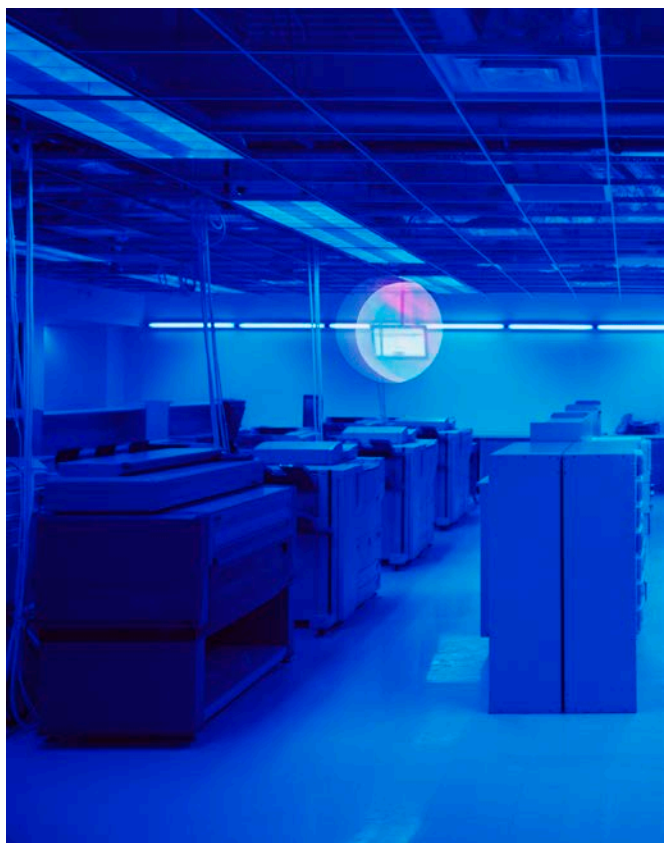


Acrylic panel/cable detail



Circular window detail showing iridescent acrylic panel

I M A G E N E T H O U S T O N



Interior night view of porch looking east



Interior daytime view of porch looking east



Reception with signature paper wall



Showroom with cables looking east



Detail of wall panel between production and reception



Production area looking north

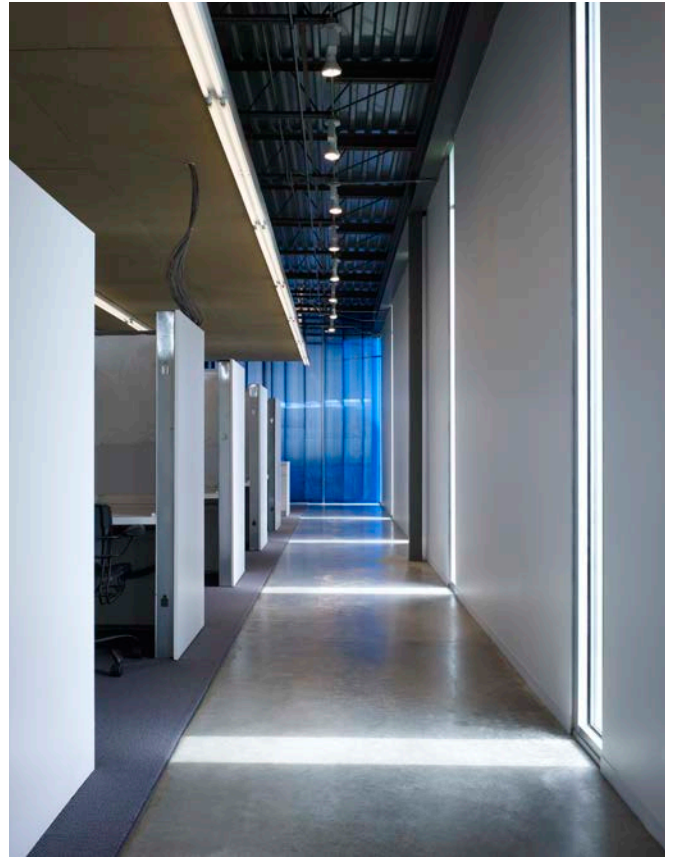


Detail of iridescent acrylic windows at the production manager's office

I M A G E N E T H O U S T O N



Sales area



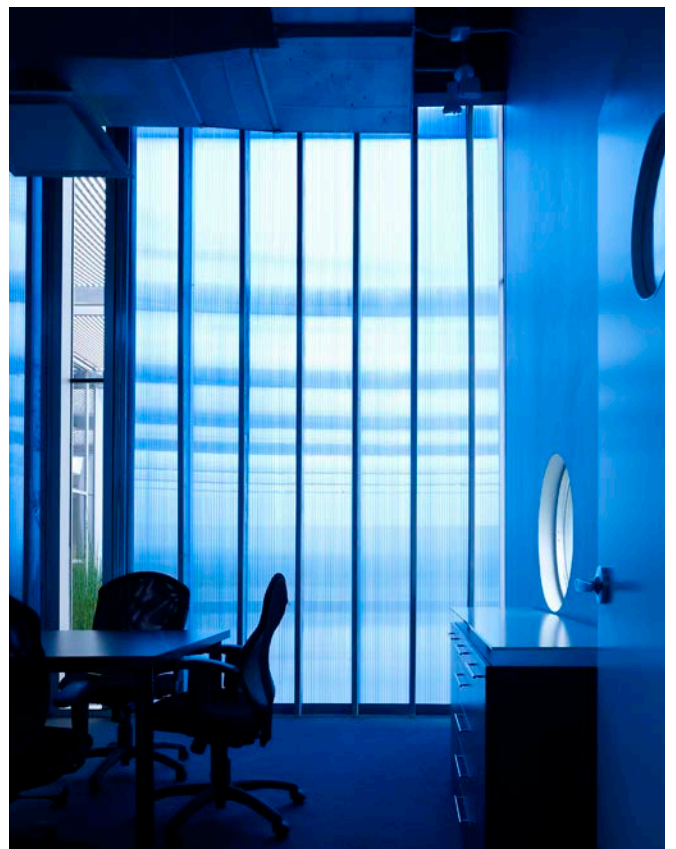
Sales area looking south



Main conference room looking north



Machine service and repair area



Conference room two north wall