



North Elevation with Bottle and building



Bottle/Canopy detail looking Southeast



Canopy detail looking East

**Client:** POPS, L. P.  
**Completion:** July 2007  
**Scope:** Approx. 5,000 SF  
**Cost:** Withheld at Owner's Request  
**Awards:** AIA, Central Oklahoma, Honor Award; Chicago Athenaeum, American Architecture Award; Chicago Athenaeum, International Architecture Award; Interior Design, "Best of Year"; AIA, Central States Region, Honor Award; Convenience Retailing Award, Most Innovative Store Design

**Scope:**

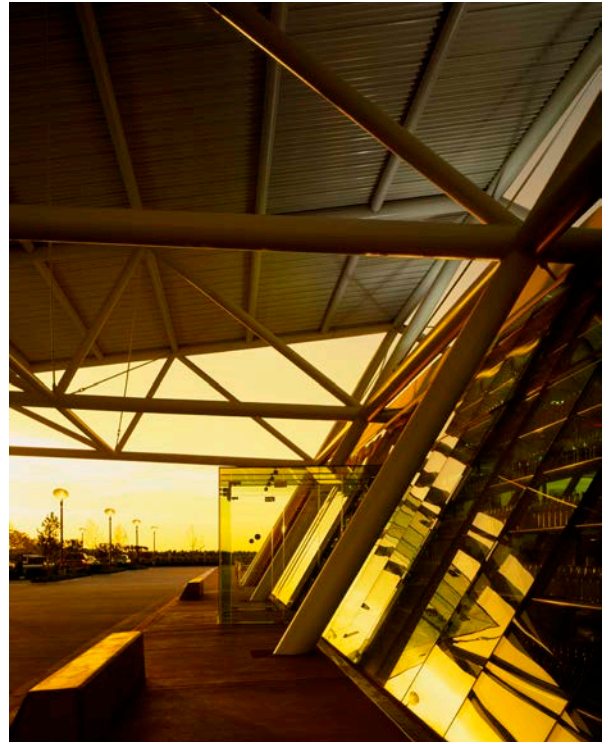
The legend of Route 66 is alive and well in Arcadia, Oklahoma. The POPS Gas Station was designed to portray the image of freedom on the open road. POPS is a Route 66 roadside attraction, not just a gas station for the family car. To pay homage to the living history of "The Mother Road," its legendary status is being honored by Elliott + Associates Architect's design. What was created is a Route 66 icon for the next generation of explorers to imagine the future of Route 66.

**Architectural Concept:** Imagine...

- A building emerging from the soil . . . growing out of the earth . . . connected to the place.
- Think of the canopy as current technology and the future with the ability to cantilever unsupported for 100'.
- Think of the canopy as embracing the stone walls as a link between the past and the future.
- Think of the great steel bridges and derricks all along Route 66 . . .
- Think stone, steel, and LED . . . a "bridge to the future."
- Think about 66 Red Bud trees, a patio and walking between them on a spring day . . .
- You can walk from the gas pump to the building without getting wet . . .
- Imagine a place called POPS . . .
- Historic photos of Route 66 and 12,000 pop bottles in the window in every imaginable color . . .
- Red neon adds a glow and defines the cash register.
- Clean restrooms
- Soda fountain / bar stools
- Store / retail area
- Old-fashioned pop machines
- Cooler
- Business card wall
- Liar's table



Canopy/Bottle detail looking northwest



North elevation detail at sloped glass wall



East elevation



Canopy looking southeast



West elevation from southwest looking north northwest



Southwest corner of stone wall/courtyard

P O P S A R C A D I A

---



East elevation with stone wall and structure detail



West elevation stone wall/structure detail



Canopy/stone wall detail



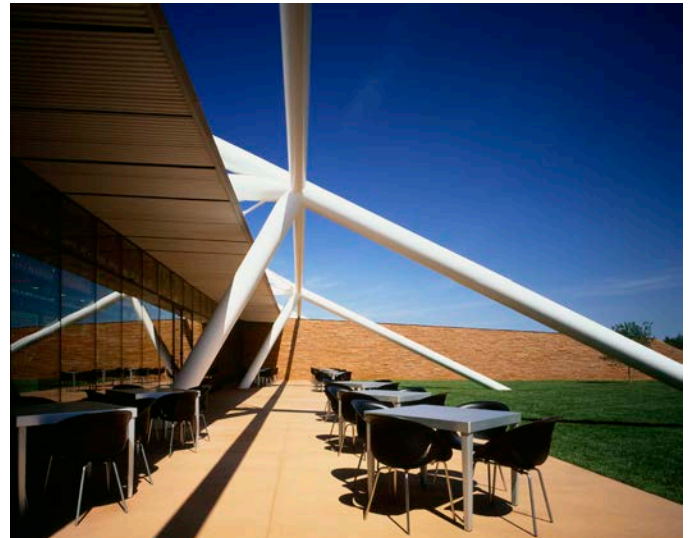
View along west stone wall looking south showing stone wall/structure detail.



Canopy/wall/ North glass wall detail



Structural detail on South patio



South Patio

P O P S A R C A D I A

---



South courtyard and panorama



Canopy view from front door looking north



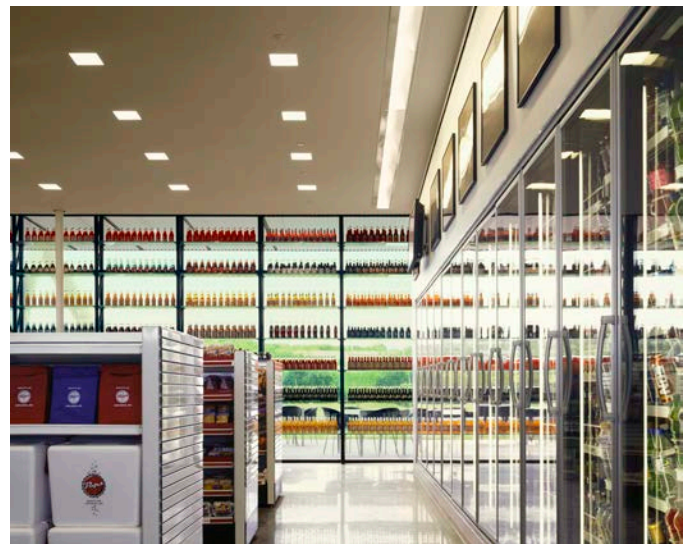
North entry sloping glass wall with pop display



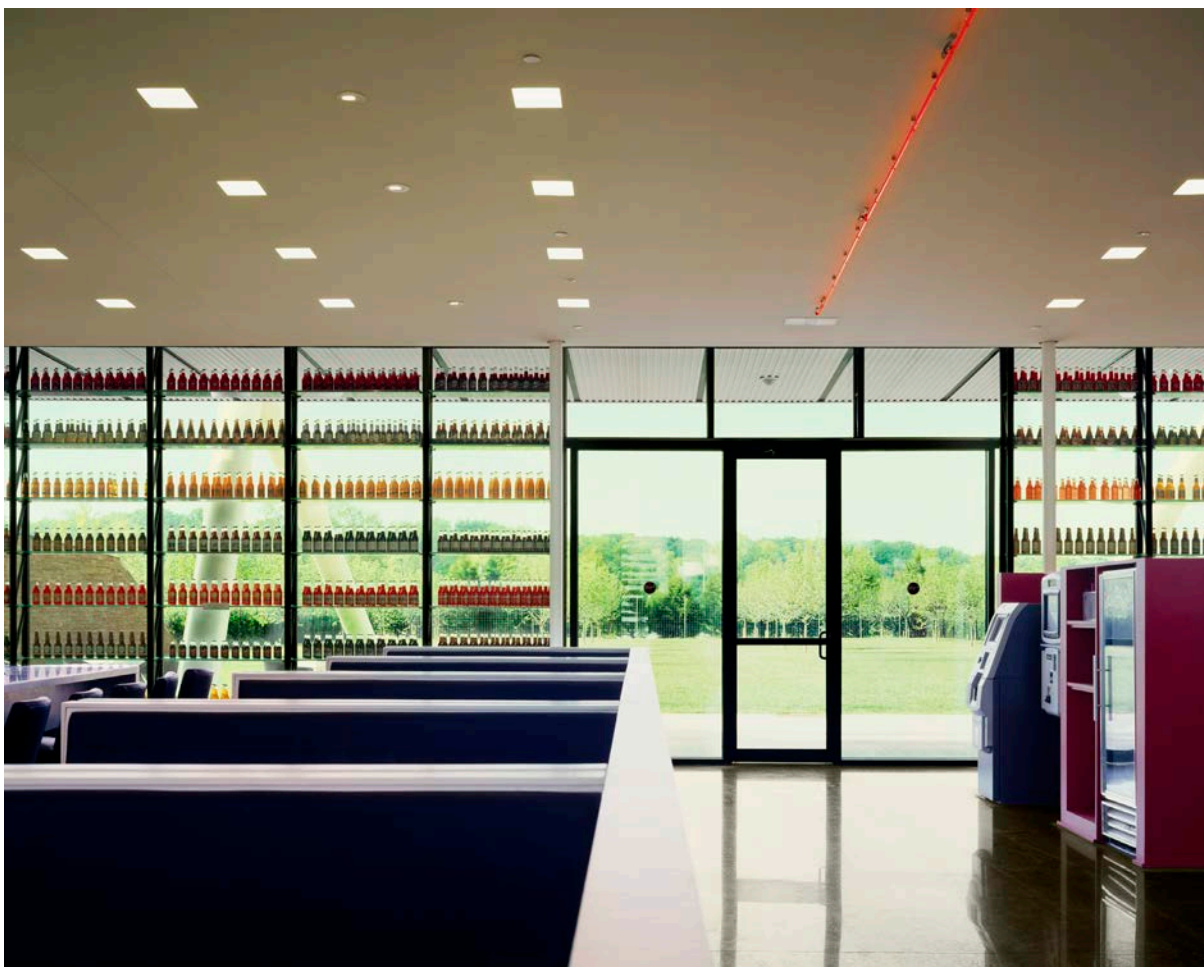
Café view looking North along counter



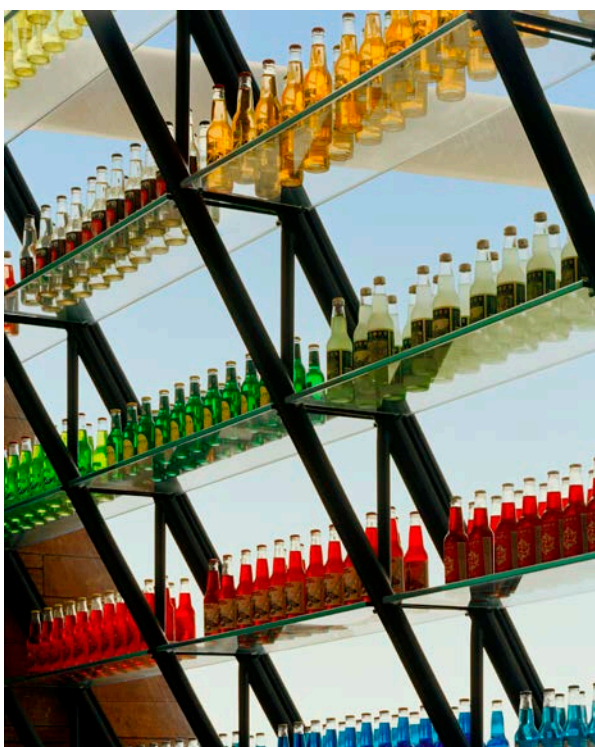
Store view looking North with pop cooler on left



Store view past pop cooler to South courtyard



Café view looking south



Detail of pop display and structure



Pop display and structure

P O P S A R C A D I A

---



View on Westminster Road looking south with POPS on east



West elevation from adjacent field



Looking east on Route 66 towards POPS



West elevation from wheat field



South elevation from courtyard



Bottle elevation



Bottle elevation



Bottle elevation