

# R E P U B L I C G A S T R O P U B



South entry elevation with super-screen and signage portal



Northwest corner of the building with signage tower



Southeast corner

**Client:** Withheld at Client Request  
**Completion:** March 2010  
**Scope:** 6,263 s.f. - total (5,357 s.f. ground floor + 906 s.f. mezzanine for kitchen)  
**Cost:** Withheld at Client Request  
**Awards:** Gold Key Award for Excellence in Hospitality Design, 2011 Finalist in Casual Dining Category; Interior Design "Best of Year" Merit Award; Architectural Lighting magazine, A/L Award

## Architectural Concept:

1. Our approach to the design supports the proposed name, menu, and spirit of the project concept.
2. You asked for the "coolest sports bar in America." We have created just that!
3. Our concept is developed around the "spirit of sport." There is:
  - **power** and **grace**.
  - strong **muscular** qualities.
  - a place with **spectacle** where you can cheer your **team** on with all your friends.
  - a place for a comfortable, **memorable** dinner with signature food and beverage.
  - It will be a great place to **hang out**.

## Details:

- Central focus is 200" projection screen and 103" plasmas with 42" eye level LCDs for bar patrons.
- 2 story beer **cooler** and beer bottle display
- Bar for **30** patrons
- Bubble Wall
- Seating for **171 - 88** in booths and **53** at tables and chairs, **seating for 16** on the outdoor patio.
- Patio as an **outdoor room** with 4 plasma TVs and fans built-in to the TV enclosure. Eight foot Nellie Stevens hedge provides a sun and wind break and makes the patio more of a surprise for patrons.
- Booths are **paperstone** with coarse leather seats and **white oak wood** tables.
- Floor is dark grey marble **terrazzo** using a dark grey matrix.
- Ceiling is painted exposed **steel** structure and metal deck with suspended sound panels.
- Bar is **copper**, top and face, with a steel plate footrest and soft downlight from under bar.
- South accent wall is the **bubble wall**.
- Separation walls at bar and booths are **paperstone**.
- Kitchen wall is **paperstone**.
- **Multi-color LED lighting** in corridor to toilets.

R E P U B L I C G A S T R O P U B

---



South elevation from adjacent retail building



Southwest corner of building with hedge wall patio enclosure



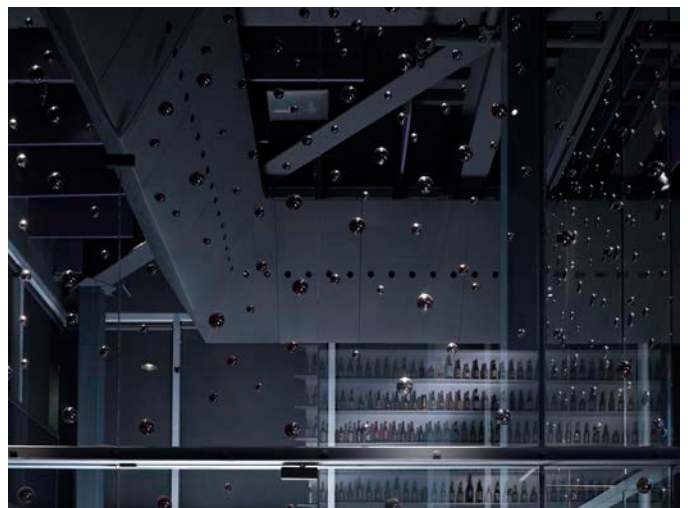
Northwest corner of the building with hedge wall patio enclosure



Northwest corner of the building with hedge wall patio enclosure



East entry with bubble glass vestibule

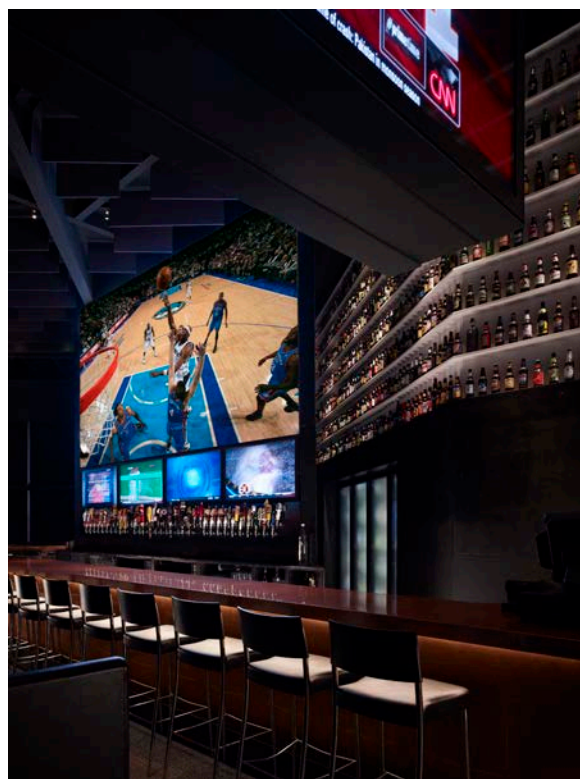


Bubble glass vestibule and triangular shaped duct

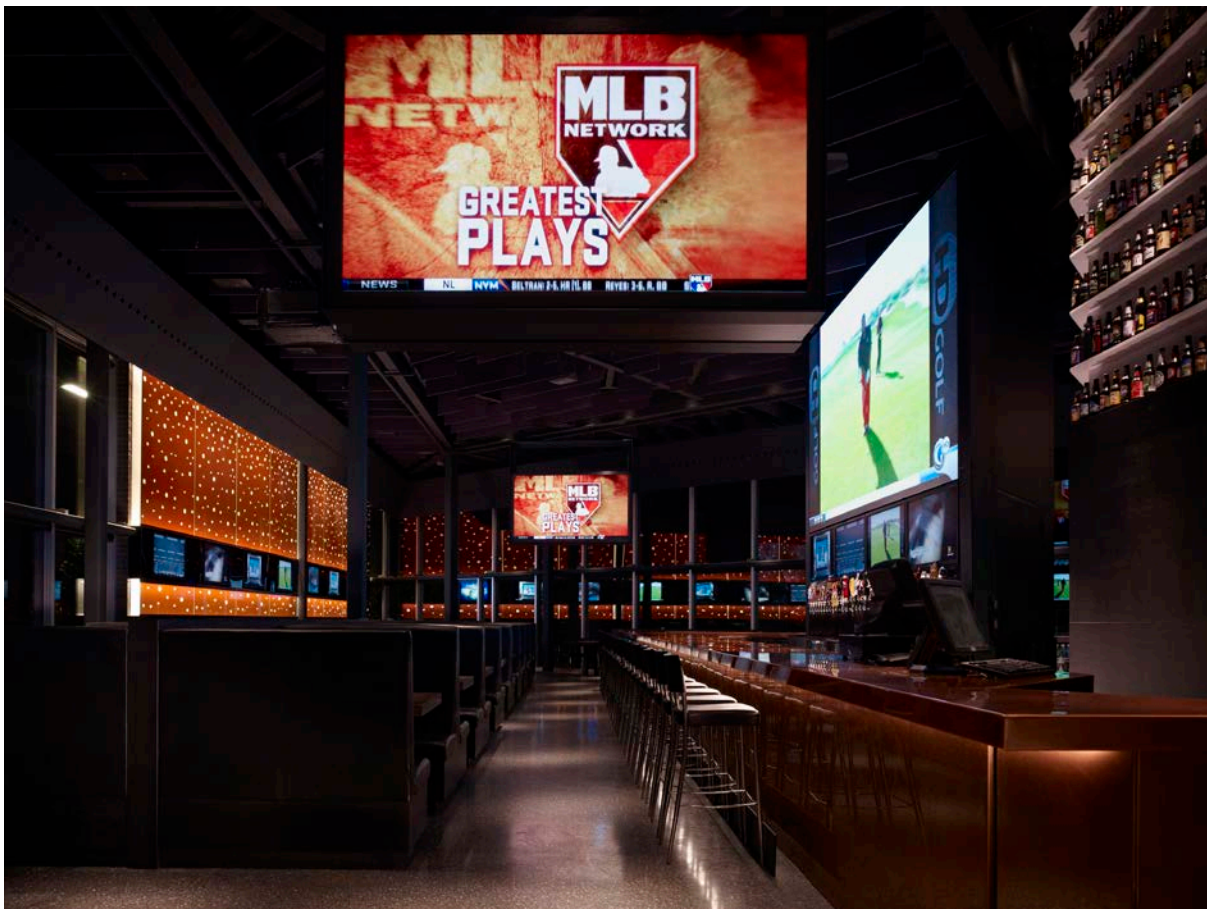
# R E P U B L I C G A S T R O P U B



View from bubble glass vestibule into Dining Room. Beer wall displays 1,342 different beers that are available.

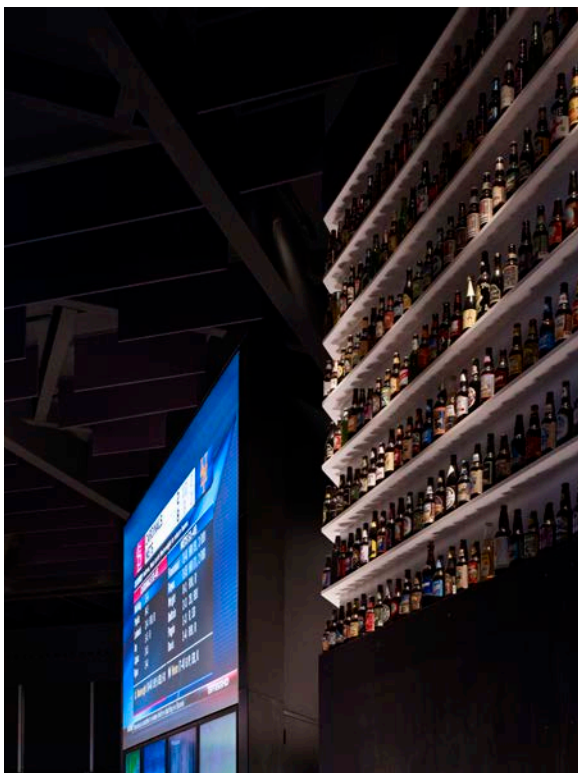


Video tower, bar and beer display wall. There are 100 beers on tap. The bar is copper with a poured acrylic top.

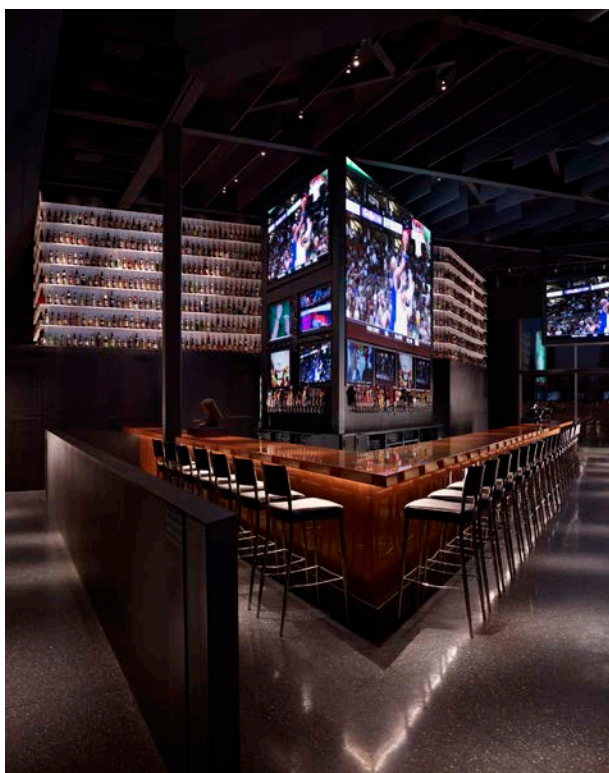


Dining Room view looking west with the bubble wall on the left (south) wall and reflected on the west glass wall

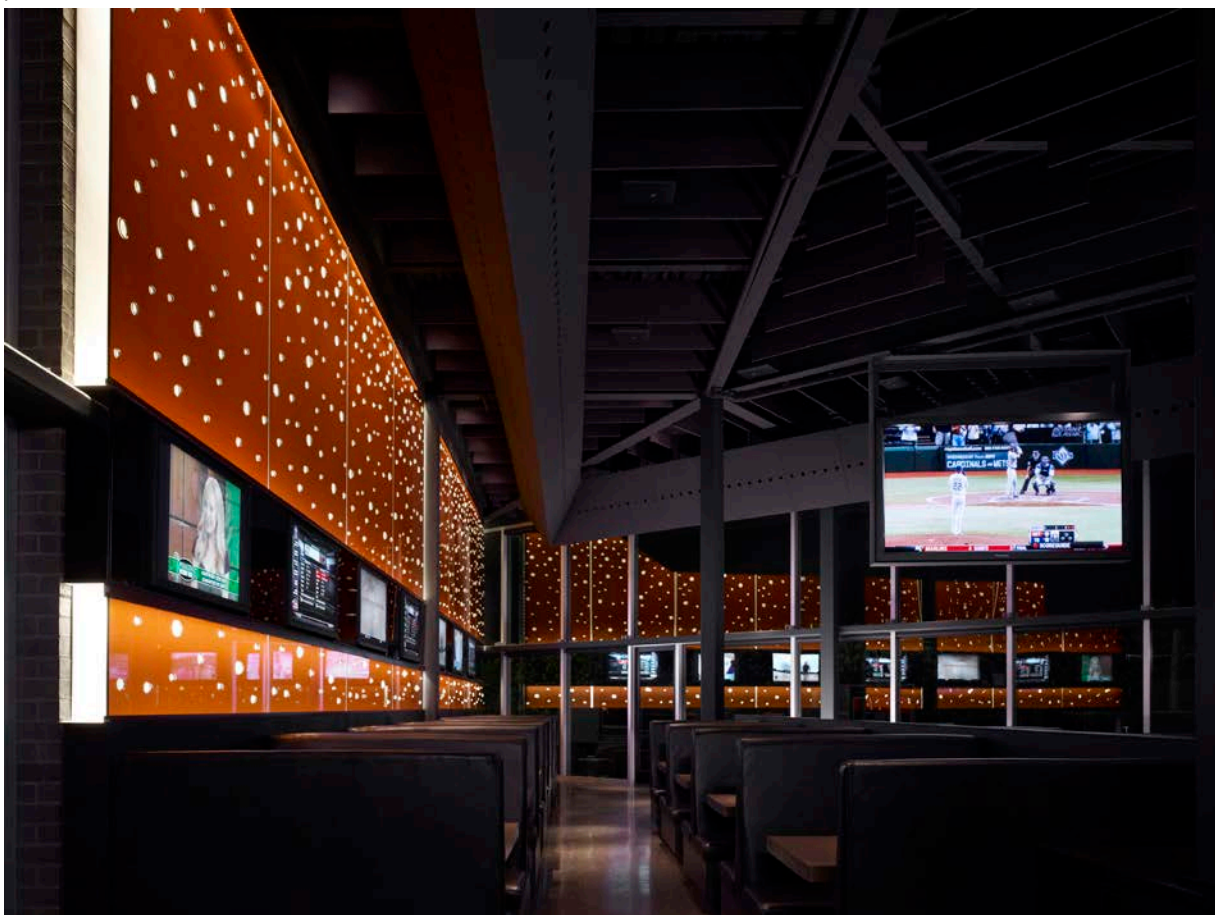
# R E P U B L I C   G A S T R O P U B



Beer display wall detail and 16'x22' video screen. The beer display wraps the 2-story beer cooler. Acoustical baffle provides sound control.



View of bar area looking east toward entry lobby



South dining area along the bubble wall. The triangular duct encircles the space

R E P U B L I C   G A S T R O P U B

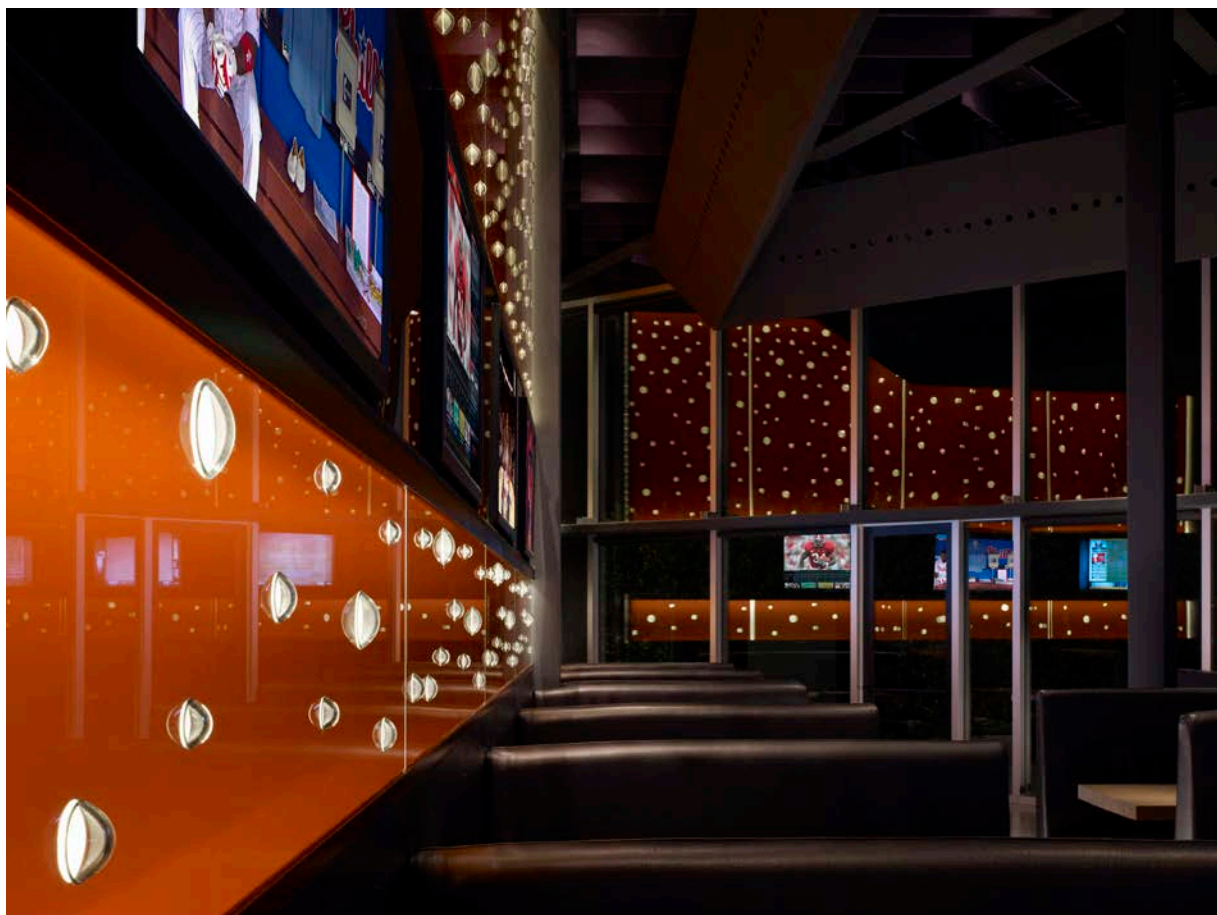
---



Bar detail

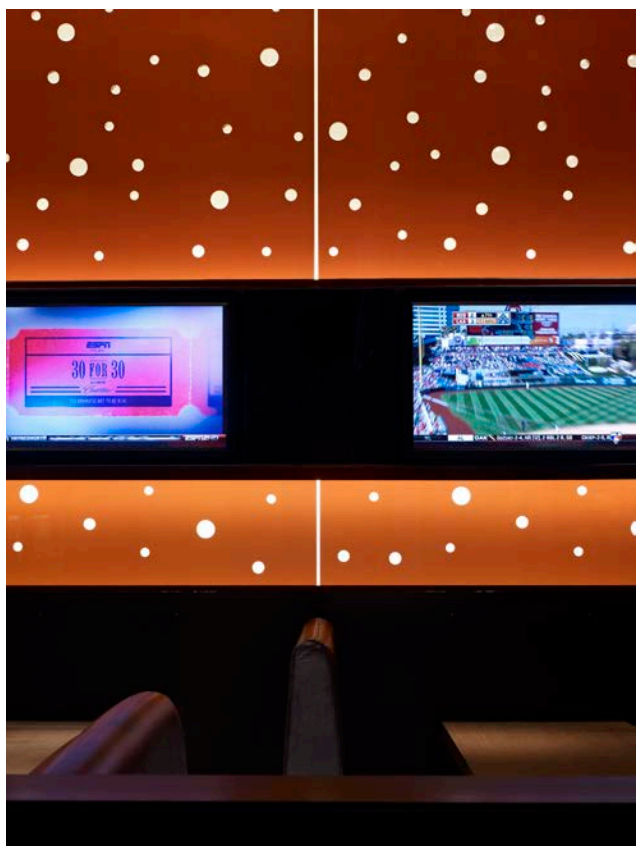


Bubble wall view looking south from bar tip



South wall view looking west

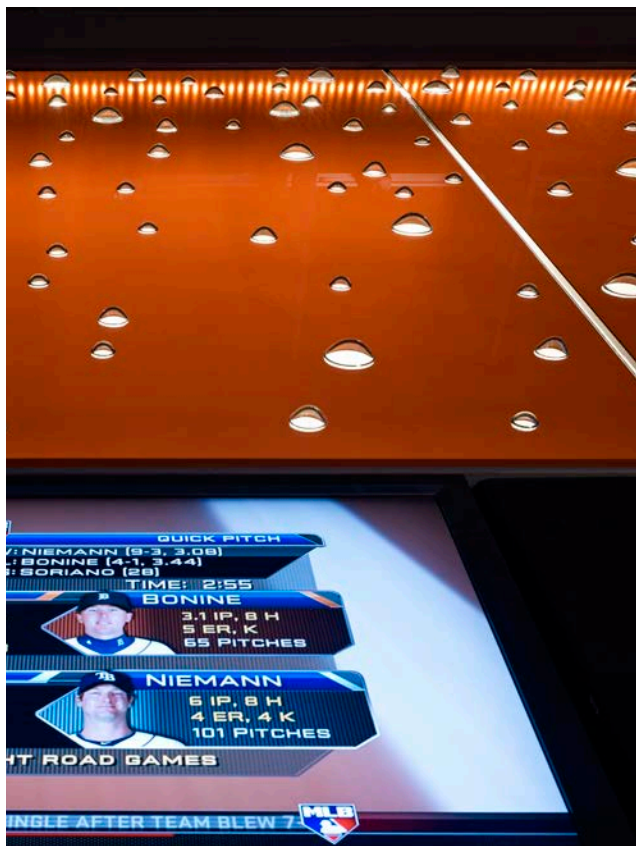
# R E P U B L I C G A S T R O P U B



South bubble wall detail



Bubble wall detail



Bubble wall looking up at ceiling edge from the booth below



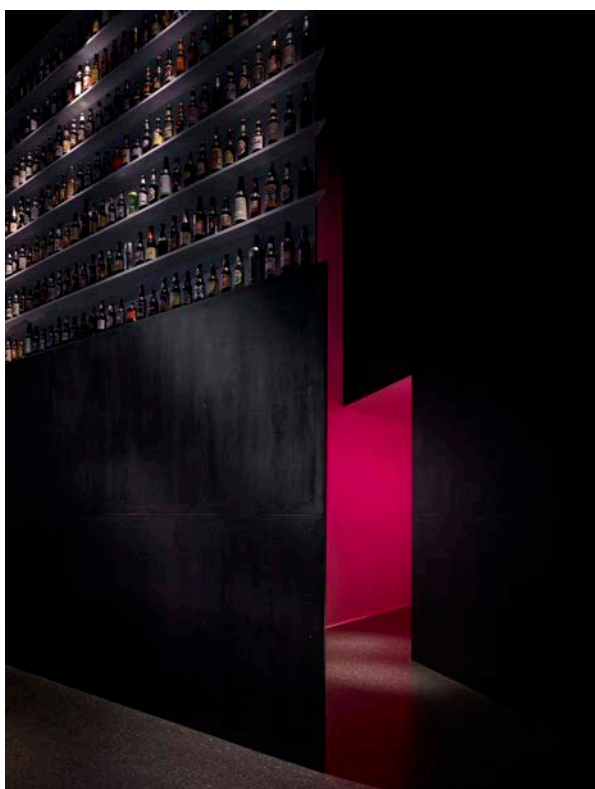
West outdoor patio.

# R E P U B L I C   G A S T R O P U B

---



West outdoor patio with 4 plasma screen TVs. The TV enclosures house speakers, heaters and a cooling fan for patron comfort.



Color-changing light creates a memorable passage to the toilets



Color-changing light creates a memorable passage to the toilets