

Corridor/gallery showing Panelite wall

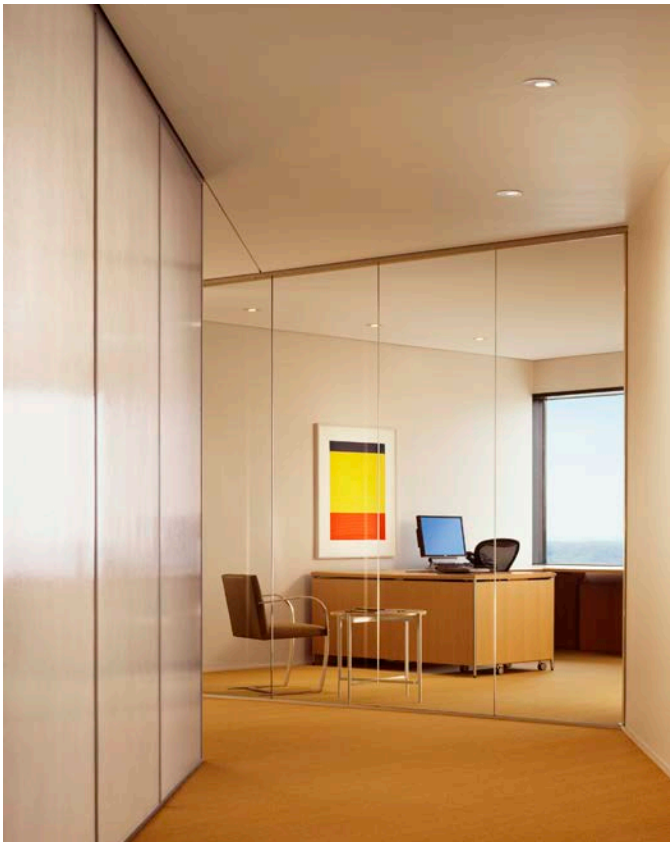
Client: SandRidge Energy
Scope: 12,763 SF
Cost: \$1,135,623

Architectural Concept:

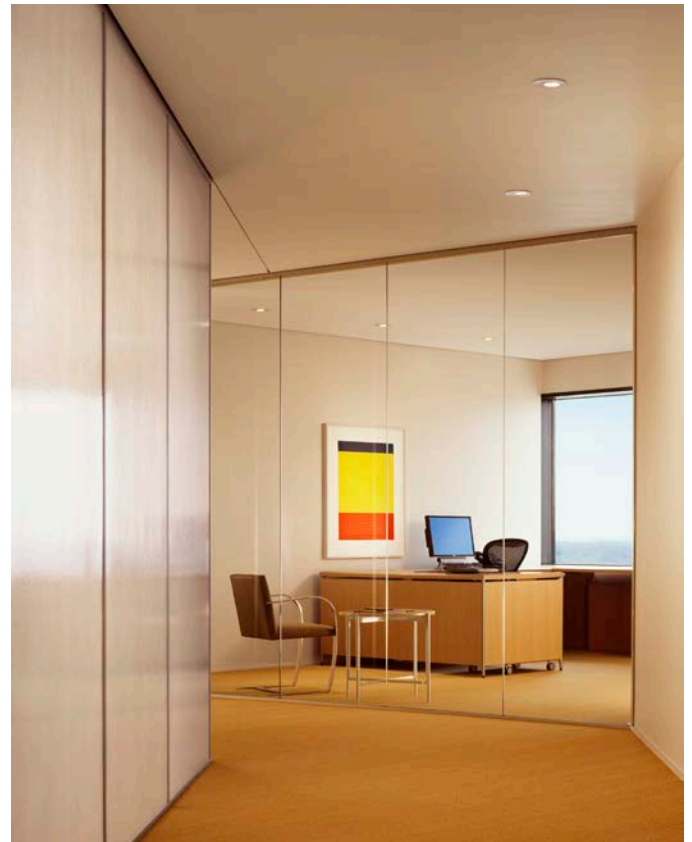
The concept for the SandRidge Energy Corporate Headquarters is to create an image for the energy company of the 21st century. The concept embodies the idea of exploration.

Design features include:

- The use of fossilized stone.
- Round surface punctures suggesting exploration.
- Unexpected circulation pattern suggesting unconventional drilling processes such as horizontal drilling.
- Circulation area walls created with translucent Panelite panels that glow with light and provide a high energy experience punctuated with a distinctive art collection.
- Organic materials including stone, wood and leather show respect for the natural environment.



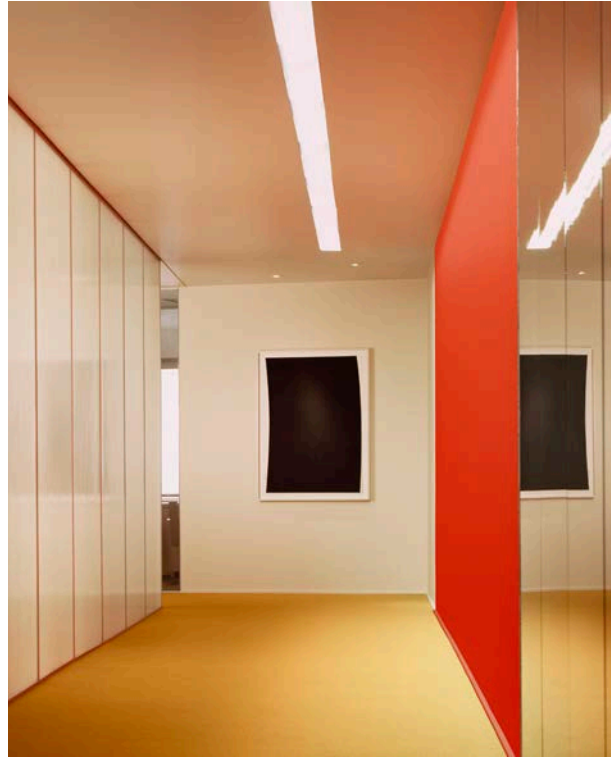
Office view from corridor/gallery



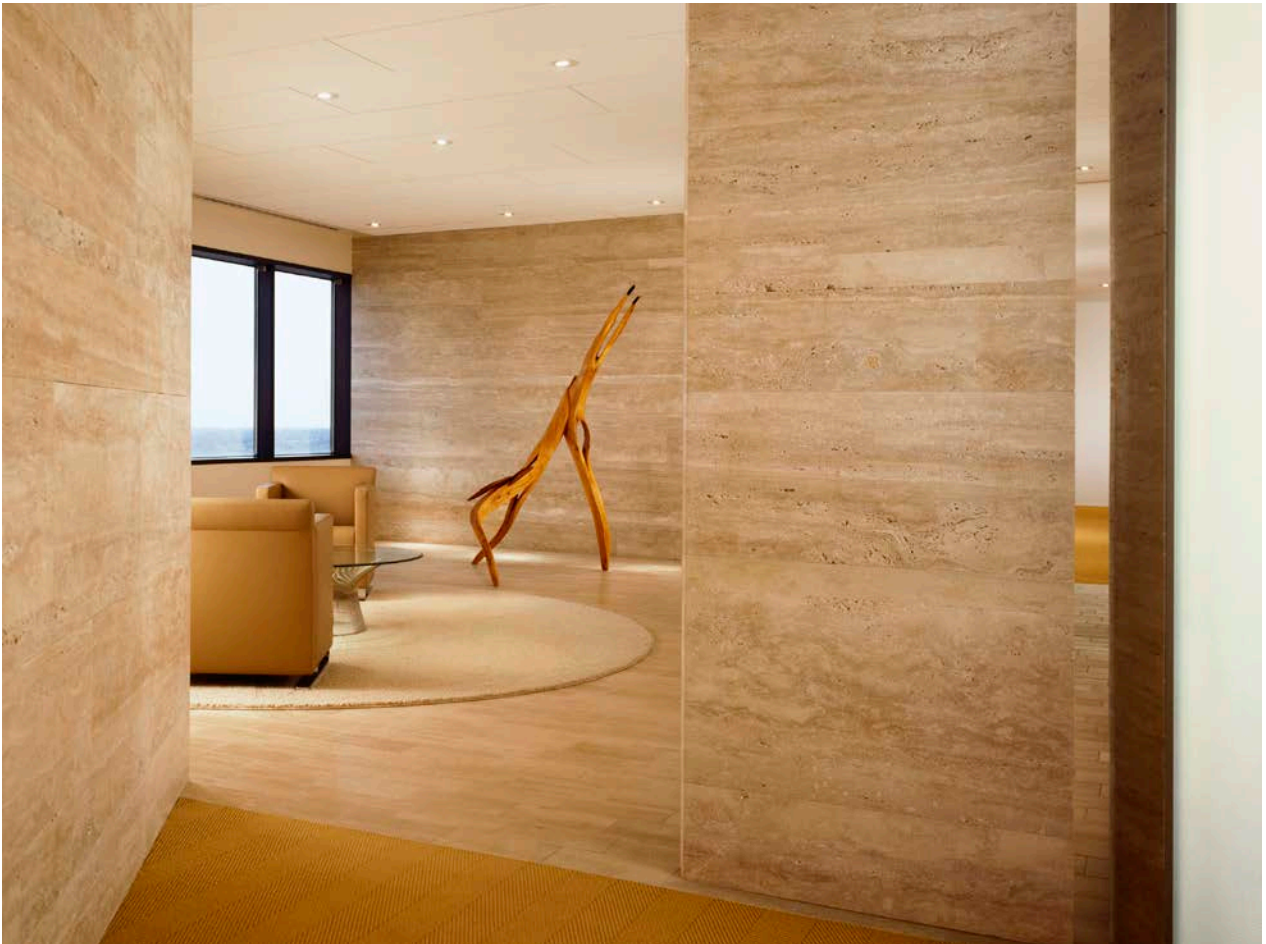
File room with Panelite wall glowing from reflected red wall in gallery



Corridor/gallery



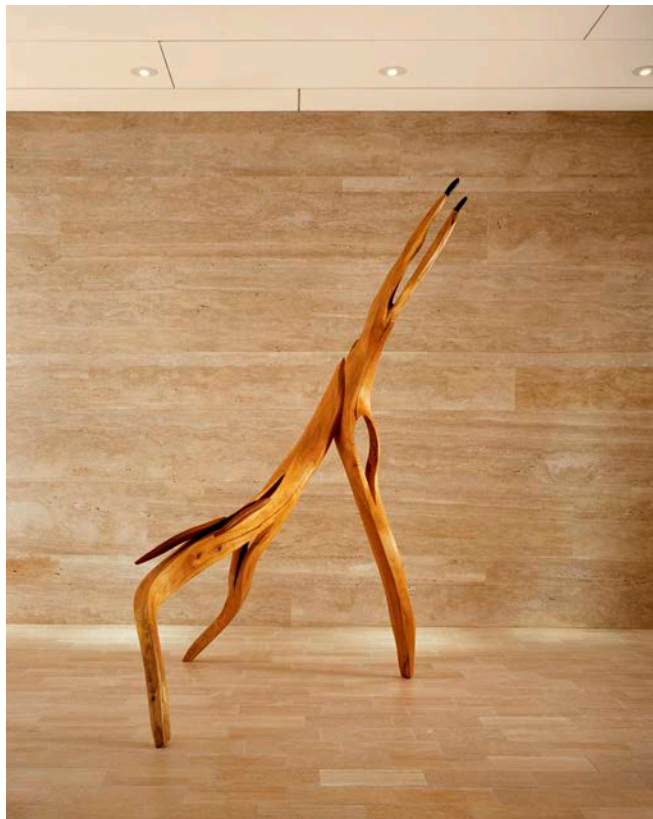
Corridor/gallery



Main reception



Main reception



Sculpture by Don Narcomey