



South elevation

Client: Will Rogers World Airport
Completion: February 2002
Scope: 18,000 S.F. project with the main body of the project to be storage for snow removal equipment. The secondary portion of this project includes related offices and support.
Cost: \$1,555,536
Awards: National AIA Honor Award for Architecture; AIA Central States Region Honor Award; Metal Architecture Honorable Mention Award; IDEAS National Merit Award; Associated Builders & Contractors of OK, Excellence in Construction Award

Description:
 The Galvalume metal siding emulates the silver skin of aircraft and translucent fiberglass panels will allow the wedge-shaped "object" to glow at night. The soaring form evokes flight.



North elevation



Southwest corner



West elevation

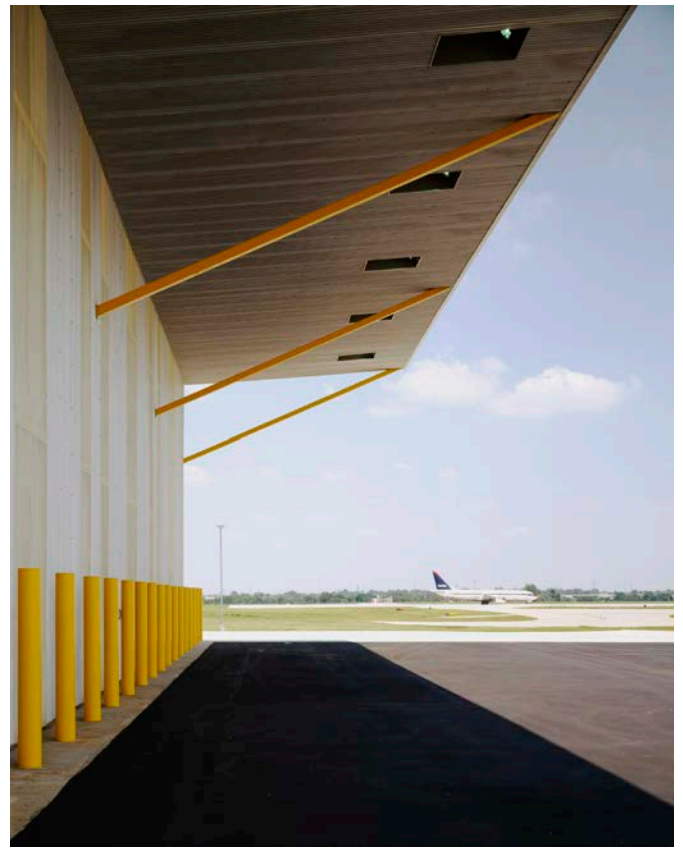


West elevation detail

S N O W B A R N



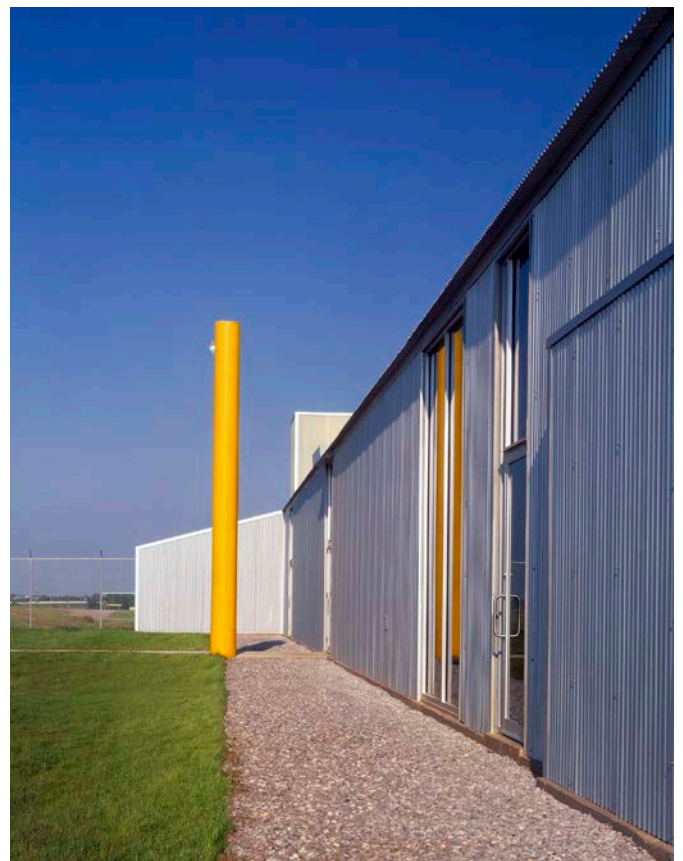
Southwest corner looking north



South roof cantilever looking east



North entry



North elevation detail

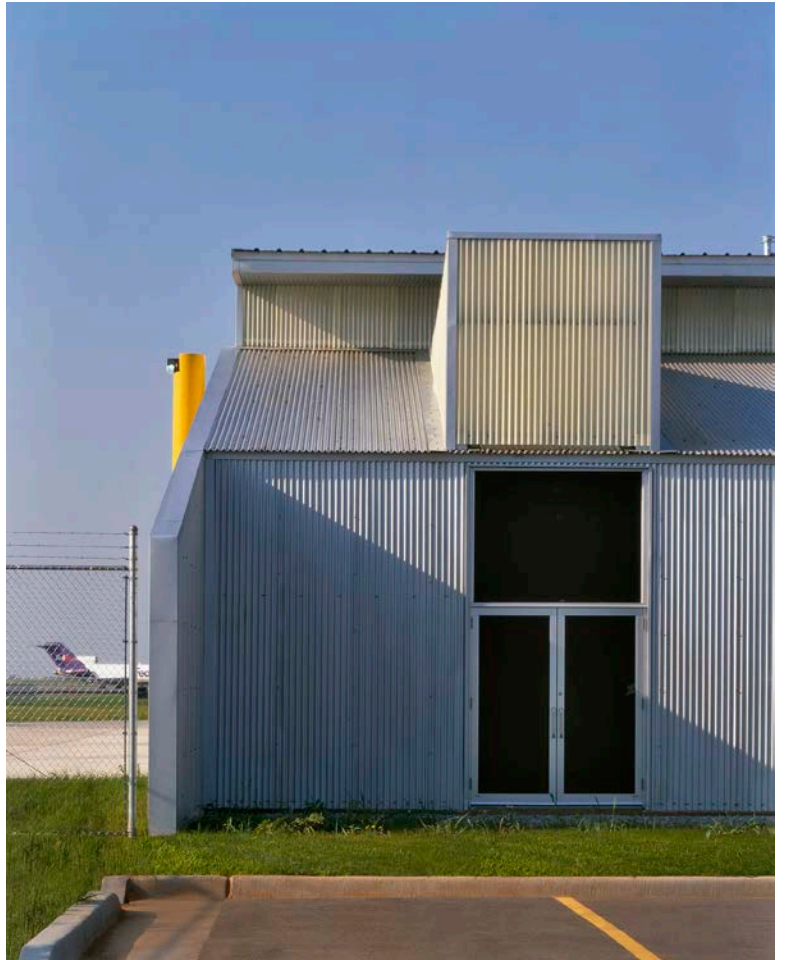
S N O W B A R N



Northwest corner



Northeast corner



Northeast corner



Southwest corner detail

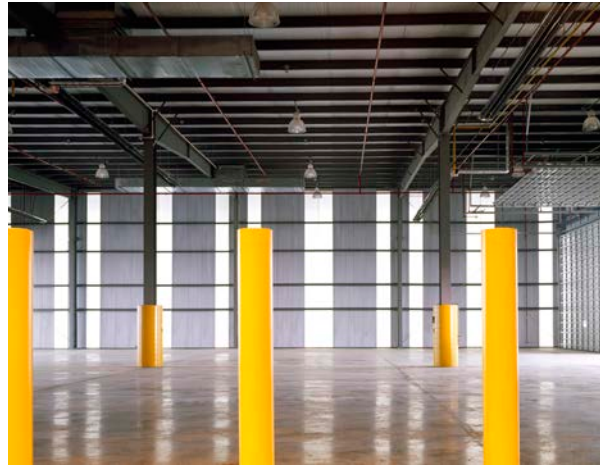


Fiberglass exhaust vent screen

S N O W B A R N



Equipment storage area looking southeast



Equipment storage area looking south from tire change area



Equipment storage area looking west



Looking north from equipment storage area towards offices and tire change



Mechanic's pit / wash bay

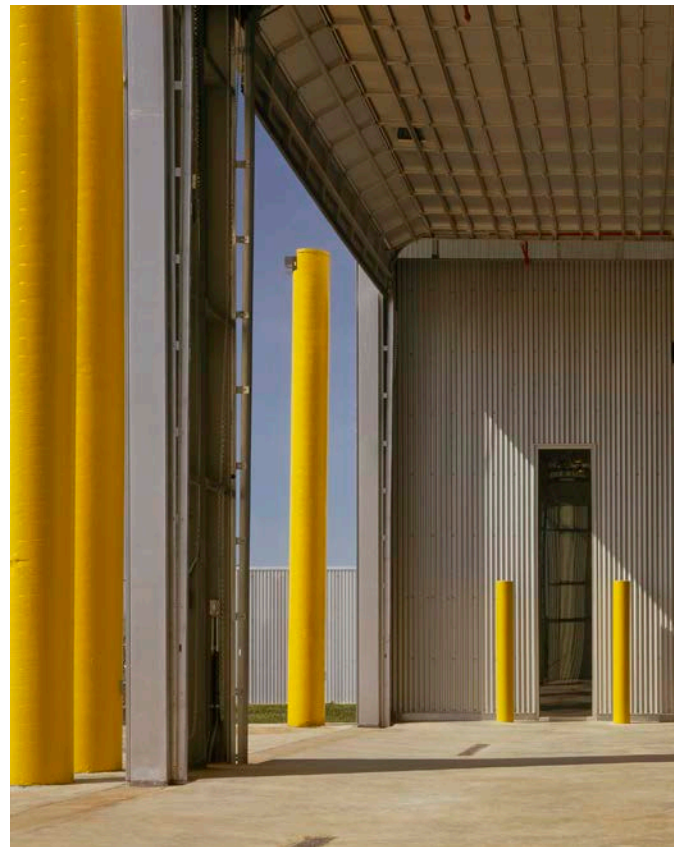


Office view with wash bay on right

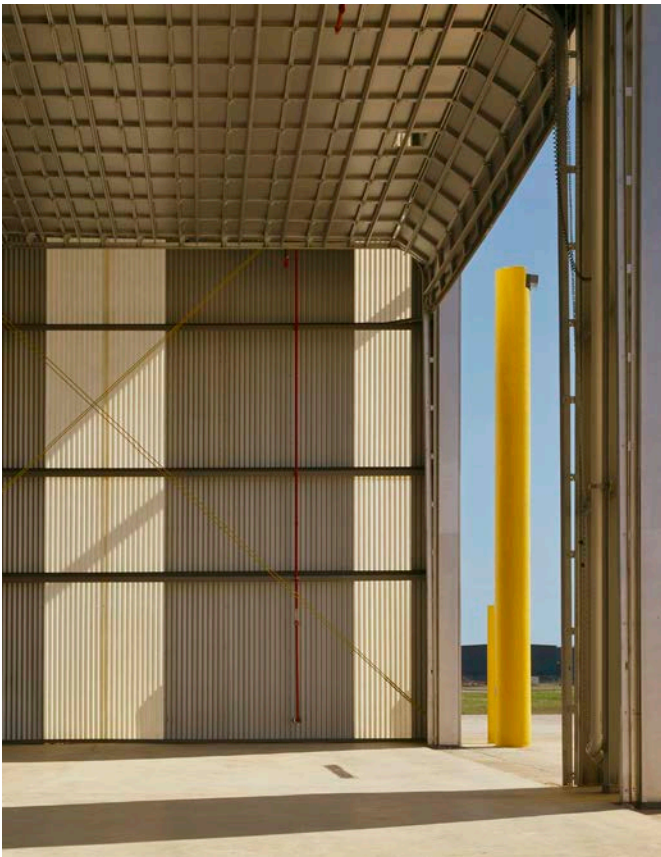
S N O W B A R N



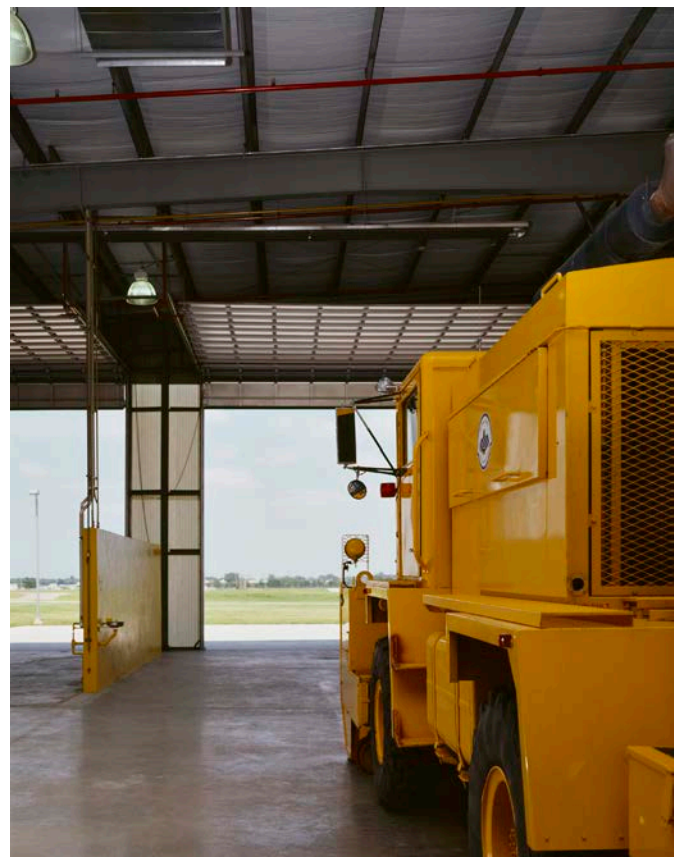
Southeast corner of equipment storage area



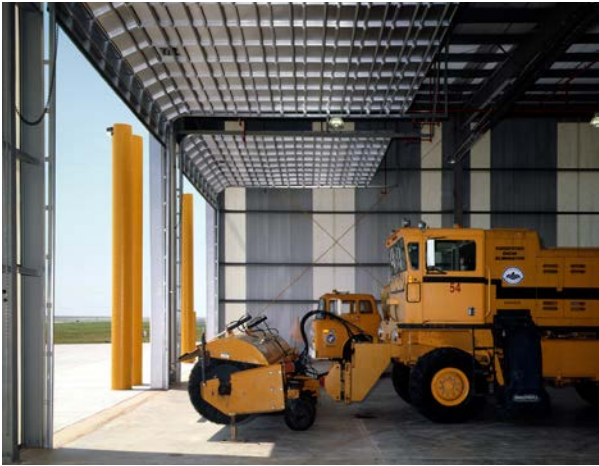
Northwest corner service door



Southwest corner service door



Equipment storage area with wash bay on left



Equipment storage area looking south



Southeast corner service door



Northeast corner